



NUCLEAR WASTE MANAGEMENT ORGANIZATION SOCIÉTÉ DE GESTION DES DÉCHETS NUCLÉAIRES

Draft Community Profile

TOWNSHIP OF EAR FALLS, ONTARIO



APM-REP-06144-0023

JULY 2013

This report has been prepared under contract to the NWMO. The report has been reviewed by the NWMO, but the views and conclusions are those of the authors and do not necessarily represent those of the NWMO.

All copyright and intellectual property rights belong to the NWMO.

For more information, please contact:

Nuclear Waste Management Organization

22 St. Clair Avenue East, Sixth Floor

Toronto, Ontario M4T 2S3 Canada

Tel 416.934.9814

Toll Free 1.866.249.6966

Email contactus@nwmo.ca

www.nwmo.ca

COMMUNITY PROFILE: **EAR FALLS**

July 2013



Prepared For:

Nuclear Waste Management Organization (NWMO)

Prepared By:

SENES Consultants



DRAFT

**COMMUNITY PROFILE:
EAR FALLS, ONTARIO**

Prepared for:

Nuclear Waste Management Organization (NWMO)

Prepared by:

SENES Consultants
121 Granton Drive, Unit 12
Richmond Hill, Ontario
L4B 3N4

July 2013

Printed on Recycled Paper Containing Post-Consumer Fibre



TABLE OF CONTENTS

	<u>Page No.</u>
ACRONYMS.....	AC-1
1.0 INTRODUCTION	1-1
2.0 COMMUNITY PROFILE	2-1
2.1 Overview.....	2-1
2.1.1 Location	2-1
2.1.2 Land Size and Uses.....	2-1
2.1.3 Vision and Strategic Plan.....	2-1
2.2 Human Assets	2-3
2.2.1 Human Asset Indicators.....	2-3
2.2.1.1 Population Size and Demographics	2-3
2.2.1.2 Skills and Labour	2-5
2.2.1.3 Education	2-6
2.2.1.4 Health and Safety Facilities and Services.....	2-8
2.2.2 Summary of Human Assets	2-10
2.2.2.1 Priorities and Key Issues.....	2-10
2.2.2.2 Community Aspirations	2-10
2.2.2.3 Capabilities and Capacities within the Community.....	2-11
2.3 Economic Assets.....	2-13
2.3.1 Economic Asset Indicators	2-13
2.3.1.1 Employment.....	2-13
2.3.1.2 Business Activity	2-14
2.3.1.3 Income.....	2-16
2.3.1.4 Tourism.....	2-17
2.3.1.5 Economic Development Services	2-20
2.3.1.6 Governance and Municipal Finances.....	2-21
2.3.2 Summary of Economic Assets	2-23
2.3.2.1 Priorities and Key Issues.....	2-23
2.3.2.2 Community Aspirations	2-24
2.3.2.3 Capabilities and Capacities within the Community.....	2-25
2.4 Infrastructure.....	2-27
2.4.1 Physical Asset Indicators	2-27
2.4.1.1 Land Use	2-27
2.4.1.2 Housing.....	2-27
2.4.1.3 Municipal Infrastructure and Services	2-29
2.4.1.4 Transportation Infrastructure	2-30
2.4.2 Summary of Physical Assets.....	2-30
2.4.2.1 Priorities and Key Issues.....	2-30
2.4.2.2 Community Aspiration.....	2-31
2.4.2.3 Capabilities and Capacities within the Community.....	2-31
2.5 Social Assets.....	2-33
2.5.1 Social Asset Indicators.....	2-33

2.5.1.1	Diversity of Population Composition	2-33
2.5.1.2	Cultural Heritage Resources	2-34
2.5.1.3	Community Facilities and Programs.....	2-34
2.5.2	Summary of Social Assets	2-39
2.5.2.1	Priorities and Key Issues.....	2-39
2.5.2.2	Community Aspirations	2-39
2.5.2.3	Capabilities and Capacities within the Community.....	2-39
2.6	Natural Environment.....	2-41
2.6.1	Natural Asset Indicators.....	2-41
2.6.1.1	Parks and Protected Areas	2-41
2.6.1.2	Natural Areas/Features of Significance	2-44
2.6.2	Summary of Natural Assets	2-45
2.6.2.1	Priorities and Key Issues.....	2-45
2.6.2.2	Community Aspirations	2-45
2.6.2.3	Capabilities and Capacities within the Community.....	2-45
2.7	Unique Characteristics	2-46
2.7.1	Community Character.....	2-46
2.7.2	Environmental Values.....	2-46
2.7.3	Community Goals	2-47
2.7.4	Community Action Plan	2-47
3.0	CENSUS DIVISION PROFILE	3-1
3.1	Overview.....	3-1
3.1.1	Expenditures – Where do Residents Purchase Goods and Services?	3-1
3.1.2	Location – List of Communities	3-1
3.1.3	Land Size and Uses.....	3-1
3.2	Communities.....	3-3
3.2.1	Community Names and Locations.....	3-3
3.2.2	Non-Aboriginal Historical Context.....	3-5
3.3	Aboriginal Communities and Organizations	3-6
3.3.1	First Nations.....	3-6
3.3.1.1	Asubpeeschoseewagong Netum Anishinabek (Grassy Narrows First Nation)	3-6
3.3.1.2	Eagle Lake (Migisi Sahgaigan).....	3-6
3.3.1.3	Wabaseemoong Independent Nation	3-7
3.3.1.4	Wabauskang First Nation.....	3-7
3.3.1.5	Lac Seul First Nation	3-7
3.3.1.6	Grand Council of Treaty #3	3-7
3.3.2	Métis	3-8
3.4	Population Dynamics (by Community)	3-8
3.4.1	Trend Over Time.....	3-8
3.4.2	Age Profile	3-9
3.5	Labour Force (Regional as a whole).....	3-10
3.5.1	Population by Education/Training Attainment	3-11
3.5.2	Employment by Activity/and Sector.....	3-12
3.6	Business Activity	3-14

3.6.1	Main Businesses – Past and Current.....	3-14
3.6.2	Number of Employees	3-15
3.6.3	Investment Trends and Projections.....	3-16
3.7	Regional Profile Summary.....	3-17
4.0	COMPARISON OF THE COMMUNITY PATTERNS WITH THE REGION AND PROVINCE.....	4-1
4.1	Population Dynamics	4-1
4.1.1	Trend Over Time.....	4-1
4.1.2	Age Profile	4-2
4.2	Labour Force.....	4-4
4.2.1	Population by Education/Training Attainment	4-4
4.2.2	Employment by Activity and Sector.....	4-5
4.3	Community Patterns with Region and Province Summary	4-6
5.0	REFERENCES	5-1

LIST OF TABLES

	<u>Page No.</u>
Table 2.2-1	Population change from 1991 to 2011 2-4
Table 2.2-2	Population by Age Cohort (1996-2011) 2-4
Table 2.2-3	Change in Population by Age Cohort (1996-2011) 2-4
Table 2.2-4	Total Labour Force by Occupation (1996-2006) 2-5
Table 2.2-5	Total Labour Force by Industry (1996-2006) 2-6
Table 2.2-6	Educational Levels in Ear Falls 1996 and 2006..... 2-7
Table 2.3-1	Ear Falls Labour Force Activity (1996-2006) 2-13
Table 2.3-2	Local Private Businesses in Ear Falls 2-15
Table 2.3-3	Local Private Services in Ear Falls 2-16
Table 2.3-4	Median Household Income in Ear Falls, District of Kenora and Ontario (2000 and 2005) 2-17
Table 2.3-5	Summary of Cultural Tourism Resources in the Project Area 2-19
Table 2.3-6	Ear Falls Municipal Property Tax (2002-2011)..... 2-22
Table 2.3-7	Ear Falls Projected 5-Year Debt Repayment Schedule (2012-2016) 2-23
Table 2.4-1	Ear Falls Dwellings by Type 1996 and 2006..... 2-28
Table 2.4-2	Ear Falls Number of Dwellings by Tenure 2-28
Table 2.4-3	Ear Falls Property Assessment Values 2-29
Table 2.5-1	Aboriginal, Non-Aboriginal, Immigrant and Non-immigrant Population in Ear Falls (1996-2006) 2-33
Table 2.5-2	Ear Falls Community Programs..... 2-35
Table 2.5-3	Ear Falls Community Facilities 2-35
Table 2.5-4	Ear Falls Community Special Events 2-36
Table 2.5-5	Social Services and Organizations in Ear Falls 2-38
Table 2.6-1	Provincial Parks in the Ear Falls Area 2-41
Table 2.7-1	Strategic Action, Roles and Responsibility and Completion Target 2-47
Table 3.4-1	Population Trend (2001-2011) – Non-Aboriginal Communities in the District of Kenora 3-9
Table 3.4-2	Gender and Age Profile (2011) – Non-Aboriginal Communities in the District of Kenora 3-9
Table 3.5-1	Labour Force Activity (2006) – Non-Aboriginal Communities in the District of Kenora 3-10
Table 3.5-2	Labour Force Activity (2001-2006) – Non-Aboriginal Communities in the District of Kenora 3-11
Table 3.5-3	Labour Force Estimates (2012) – District of Kenora..... 3-11
Table 3.5-4	Population by Education/Training Attainment (2006) – Non-Aboriginal Communities in the District of Kenora..... 3-12
Table 3.5-5	Employment by Activity and Sector (2001-2006) – Non-Aboriginal Communities in the District of Kenora..... 3-13
Table 3.6-1	Number of Employees by Industry in the District of Kenora..... 3-16

LIST OF TABLES (Cont'd)

	<u>Page No.</u>
Table 4.1-1 Population Trend (1996-2011) – Ear Falls, District of Kenora and the Province of Ontario.....	4-1
Table 4.1-2 Gender and Age Profile (2011) – Ear Falls, District of Kenora and Province of Ontario.....	4-2
Table 4.2-1 Labour Force (2006) – Ear Falls, District of Kenora and Province of Ontario ...	4-4
Table 4.2-2 Population by Education/Training Attainment (2006) – Ear Falls, District of Kenora and Province of Ontario.....	4-5
Table 4.2-3 Employment by Activity and Sector (2006) – District of Kenora and Province of Ontario.....	4-5
Table 4.2-4 Distribution of Businesses in the District of Kenora Economy as Compared to Ontario (2010).....	4-6

LIST OF FIGURES

	<u>Page No.</u>
Figure 2.1-1 Ear Falls and Surrounding Lands.....	2-2
Figure 2.2-1 Ear Falls Population Trend 1996 to 2011	2-3
Figure 2.3-1 Operating Revenues and Expenditures of the Township (2002 to 2011)	2-21
Figure 2.3-2 Ear Falls Municipal Property Tax (2002 to 2011)	2-22
Figure 2.6-1 Ear Falls Parks and Conservation Reserves.....	2-42
Figure 2.6-2 Number of Visitors to Pakwash Provincial Park (2008-2011)	2-43
Figure 2.6-3 Camper Origin, Pakwash Provincial Park, 2011	2-44
Figure 3.1-1 District of Kenora, Ontario	3-2
Figure 4.1-1 Percentage Change in Population Over Time, Compared to 1996 Population, Ear Falls, District of Kenora and Province of Ontario.....	4-2
Figure 4.1-2 Age Profile (2011) – Ear Falls	4-3
Figure 4.1-3 Age Profile (2011) – District of Kenora	4-3
Figure 4.1-4 Age Profile (2011) – Province of Ontario.....	4-3

ACRONYMS

APM	Adaptive Phase Management
CCDC	Chukuni Communities Development Corporation
CMA	Census Metropolitan Areas
CPR	Canadian Pacific Railway
EDC	Economic Development Committee
KDSB	Kenora District Service Board
MTO	Ministry of Transportation
MNO	Métis Nation of Ontario
NTAB	Northwest Training and Adjustment Board
NWCC	Nuclear Waste Community Committee
NWHU	Northwestern Health Unit
NWMO	Nuclear Waste Management Organization
OPP	Ontario Provincial Police

1.0 INTRODUCTION

This community profile has been prepared as part of the Township of Ear Falls' participation in the Nuclear Waste Management Organization's (NWMO) *Learn More* program. This program is offered to communities interested in exploring and potentially hosting the Adaptive Phased Management project, the deep geological repository and centre of expertise which is required as part of Canada's plan for the long-term management of used nuclear fuel.

This document brings together information about the community, its history, its aspirations, and current conditions. The information contained in this report is not an assessment of any kind; instead it is intended to paint a picture of the community as it stands today. Such a picture can be a helpful starting point for community discussions about how future projects might be implemented in the community, and the extent to which a project might contribute to the well-being of the community over the long term, including the Adaptive Phased Management project. The Adaptive Phased Management project will only be implemented in a community that has reflected upon whether the project will contribute to community well-being and, after a series of detailed studies have been completed to confirm the safety and appropriateness of a site, has expressed an informed willingness to host the project. Over time, communities in the surrounding area will also need to become involved in the learning process.

This profile is organized to describe the characteristics of the community through five different perspectives or 'lenses':

- Human: Skills, knowledge and essential services supporting the well-being of the community;
- Economic: Monetary or financial resources supporting the well-being of the community;
- Infrastructure: Basic physical infrastructure supporting the well-being of the community;
- Social: Social and community activities in which people participate and the resources drawn upon to support well-being; and,
- Natural environment: Nature and the natural environment important to well-being.

The characteristics of the community are referred to as "assets" throughout the report. This is intended to highlight their importance and pave the way for a broad and holistic discussion of how the community may be affected by the Adaptive Phased Management project, or other large project which the community may consider. This discussion of the characteristics of the community which support community life may also help the community identify other important aspects which should also be considered.

The information and data used to compile this profile was derived from a combination of sources, including:

- Publicly available documents and statistics;
- Data and information provided by the community; and,
- Insights derived from discussion with the community liaison committee and through interviews with community leaders.

Although this profile contains references to other communities within the region, these references are intended only as a means to round out the community profile and provide some context for discussion.

The NWMO Learn More program encourages collaboration and shared learning involving the NWMO and the community throughout all stages of reflection and decision-making. NWMO efforts to learn about and understand the community, its aspirations and current conditions will continue throughout the duration of the Township of Ear Falls' involvement in the Learn More program.

2.0 COMMUNITY PROFILE

2.1 OVERVIEW

2.1.1 Location

The Township of Ear Falls (hereafter referred to as Ear Falls) is located in the District of Kenora, in northwestern Ontario. It is located on Highway 105 at the northwest end of Lac Seul, 70 km southeast of Red Lake, and 98 km northwest of Vermillion Bay (which is at the intersection of Highway 17 and Highway 105). Ear Falls was incorporated in 1970.

2.1.2 Land Size and Uses

The land area of Ear Falls is approximately 330 km². The Ear Falls Townsite is the only urbanized area within the Township. Other land uses include resource extraction, forestry, and commercial, industrial, institutional, and rural residential. Figure 2.1-1 provides a map of Ear Falls and its surrounding lands.

2.1.3 Vision and Strategic Plan

Ear Falls has a community vision; it is articulated in the document *Township of Ear Falls Strategic Plan 2011*,¹ which states its vision as follows:

“[To] encourage and support the growth of Ear Falls in a manner that will result in a sustainable, complete community while maintaining that small town community character that makes the Township a desirable place to live, work and play”

The Township of Ear Falls Strategic Plan 2011 has identified three high priority and two medium priority actions. The high priority actions are to:

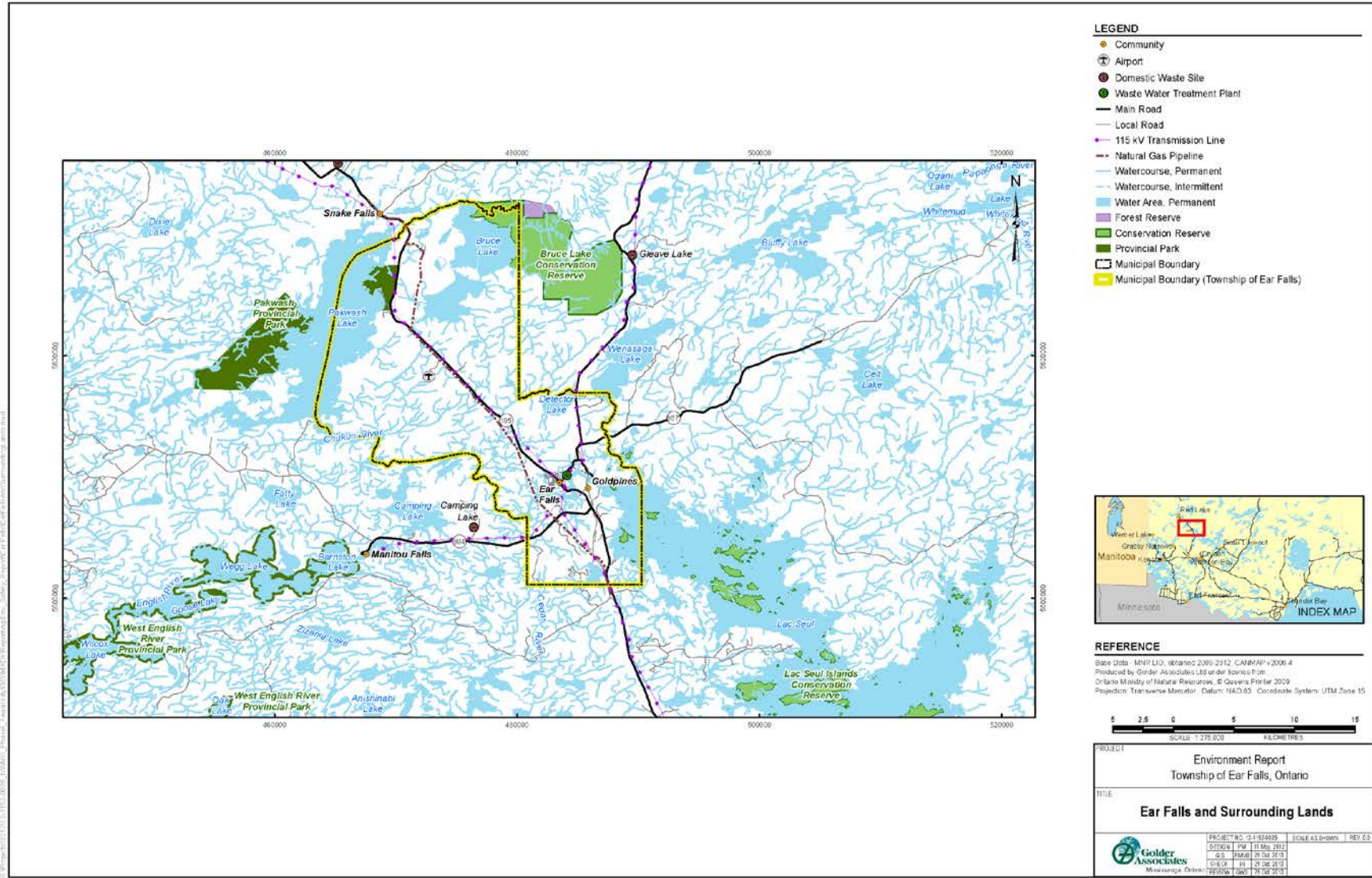
- engage in further studies regarding Nuclear Waste Management;
- continue to improve communication between the staff, Council and the public; and,
- plan for a Community of 5,000 people.

The medium priority actions include:

- the development of an Asset Management Plan to review and determine future infrastructure and services, and determining how the Township can meet these needs while maintaining financial sustainability in the long-term; and
- undertaking an operational review on a five-year cycle which will assist the Township in providing a sustainable level of service.

¹ MERIDIAN Planning Consultants Inc. (Meridian) 2011.

Figure 2. 1-1 Ear Falls and Surrounding Lands



2.2 HUMAN ASSETS

2.2.1 Human Asset Indicators

The Human Assets within a community include the skills and knowledge inherent in a community and the ability of a community to provide its residents with access to other skills, knowledge and essential services that are fundamental to maintaining community well-being, quality of life or a desired standard of living. Some of the more specific indicators within the category for Human Assets include:

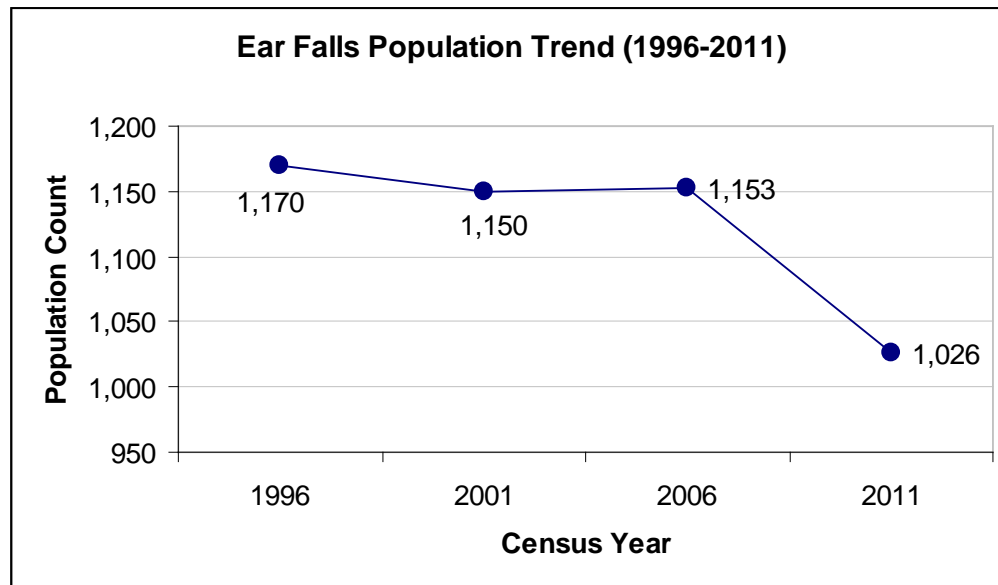
- Population Size and Demographics;
- Skills and Labour;
- Education; and,
- Health and Safety Facilities and Services.

These indicators are described in this section, within the context of the Human well-being of Ear Falls. A photo exhibit of Human Assets is provided at the end of the section.

2.2.1.1 Population Size and Demographics

Similar to other small communities in northwestern Ontario, Ear Falls has experienced a declining population since the 1990's (Figure 2.2-1). Ear Falls' population change between 1996 and 2011 is tabulated in Table 2.2-1. As illustrated in Table 2.2-1, the population declined 11% between 2006 and 2011. The decline between 2006 and 2011 reflects the recession experienced primarily by the forestry industry and the loss of a local employer, the Ear Falls Saw Mill in 2009.

Figure 2.2-1 Ear Falls Population Trend 1996 to 2011



Source: Statistics Canada (1997, 2002, 2007, 2012a)

Table 2.2-1 Population change from 1991 to 2011

Time Period	Population Change
1991-1996	-9.6%
1996-2001	-1.7%
2001-2006	-0.3%
2006-2011	-11.0%

Source: Statistics Canada (1997, 2002, 2007, 2012a)

According to the 2011 census data, the median age of the population was 39.2 years with a total female population of 520 and a male population of 505.

Table 2.2-2 provides the total population by age from 1996 to 2011. Table 2.2-3 provides the change in population as a percentage. Generally, the population is aging with declines in all age cohorts under 64 years, and an increase in the age cohort over 65 years (with the exception of a 10.8% decline between 2006 and 2011 of the population in the 45 to 64 age cohort). In 2011, the age cohort over the age of 65 years represents 14% of the total population compared to 12% in 2006 and 9% in 2001 and 1996.

Table 2.2-2 Population by Age Cohort (1996-2011)

Age Cohort	1996	2001	2006	2011
0 to 14 years	285	250	220	215
15 to 24 years	150	165	145	105
25 to 44 years	355	340	320	275
45 to 64 years	285	290	325	290
65 + years	105	105	140	145

Source: Statistics Canada 2012a

Table 2.2-3 Change in Population by Age Cohort (1996-2011)

Age	1996-2001	2001-2006	2006-2011
0 to 14 years	- 12.3%	-12.0%	-2.3%
15 to 24 years	10.0%	- 12.1%	- 27.6%
25 to 44 years	- 4.2%	- 5.9%	-14.1%
45 to 64 years	1.8%	12.1%	-10.8%
65 + years	0.0%	33.3%	3.6%

Source: Statistics Canada (1997, 2002, 2007, 2012a)

2.2.1.2 Skills and Labour

After its incorporation in 1970, the local economy of Ear Falls revolved around the mining industry, and in particular, the Griffith Mine (now abandoned), which was approximately a 15 minute drive outside the town.² Stelco Mining Co. developed the large iron ore deposits at Bruce Lake commencing production in 1967 and then closed in 1986, with a loss of 280 jobs. In 1997, the Avenor sawmill was opened, providing Ear Falls with new economic opportunities.

The economic downturn of 2008/09 impacted Ear Falls; the sawmill and logging industry crashed with the decline of the USA housing market. The Weyerhaeuser mill was sold in 2007 to Domtar, which in turn closed the mill in October 2009. Associated with this closure was the loss of approximately 150 jobs. Shortly thereafter, followed the closures of five of the six local logging and forestry services companies, leaving only the R&W Timber company which currently employs 20 individuals.

The distribution of total labour force by skill/occupation over the period of 1996 to 2006 is provided in Table 2.2-4. From 1996 to 2006, the largest segment of the total labour force worked in the sales and services sector. Occupations unique to primary industry also play an important role in the community, claiming the second highest segment of the labour force in 1996 and 2001, and coming in third in 2006. The trades, transport and equipment operators and related occupations were the second largest segment of the labour force in 2006.

Table 2.2-4 Total Labour Force by Occupation (1996-2006)

Total Labour Force by occupation - Skills Profile	1996	2001	2006
Total experienced labour force 15 years and over	555	635	715
Management occupations	55	75	60
Business, finance and administration occupations	35	60	100
Natural and applied sciences and related occupations	10	20	25
Health occupations	10	0	20
Occupations in social science, education, government service and religion	40	20	50
Occupations in art, culture, recreation and sport	0	0	0
Sales and service occupations	165	160	160
Trades, transport and equipment operators and related occupations	95	120	120
Occupations unique to primary industry	105	130	90
Occupations unique to processing, manufacturing and utilities	40	55	80

Source: Statistics Canada 2012a

² Statistics Canada 2012a.

Total labour force by industry between 1996 and 2006 is provided in Table 2.2-5. The total labour force has increased from 555 individuals in 1996 to 715 individuals in 2006 as evident in Table 2.2-5. The largest increase is seen in manufacturing; a growth from 10 individuals in 1996 to 130 individuals in 2006. Growth is also evident in: agriculture and other resource-based industries; wholesale trade; retail trade; finance and real estate; health care and social services; educational services; and business services.

Table 2.2-5 Total Labour Force by Industry (1996-2006)

Total Labour Force by industry	1996	2006
Total experienced labour force 15 years and over	555	715
Agriculture and other resource-based industries	135	145
Construction	10	10
Manufacturing	10	130
Wholesale trade	0	25
Retail trade	60	70
Finance and real estate	0	15
Health care and social services	15	45
Educational services	55	70
Business services	0	55
Other services	240	145

Source: Statistics Canada (1997, 2007)

Note: Data for 2001 are not provided in Table 2.2-5 as the labour force by industry is categorized differently than data provided for 1996 and 2006.

Note: The most recent census data (2011) are not published at this time.

2.2.1.3 Education

Education levels for Ear Falls are provided in Table 2.2-6. Noteworthy is that although there is a decrease in population between 1996 and 2006, the number of individuals with a high school diploma or equivalent has increased from 100 to 310. The number of people with college, CEGEP or other non-university certificate has also risen from 165 to 245 over the same period. Although the number of those with a university certificate, diploma or degree has decreased by five over the 1996 to 2006 time period, it is worth noting that the total number of those without a certificate, diploma or degree has also decreased by 200 over the same period.

Table 2.2-6 Educational Levels in Ear Falls 1996 and 2006

Education Level	1996	%	2006	%
No certificate, diploma or degree	405	46%	205	22%
High School Diploma or equivalent	100	11%	310	33%
College, CEGEP or other non-university certificate	165	19%	245	26%
Apprenticeship & trades (diploma, certificate)	90	10%	140	15%
University certificate or diploma below the bachelor level	20	2%	35	4%
University certificate, diploma or degree	50	6%	45	5%
TOTAL	880		945	

Source: Statistics Canada 2012

Note: The most recent census data (2011) are not published at this time.

The Township of Ear Falls is within the Keewatin Patricia District School Board which is responsible for 17 elementary schools and 7 secondary schools, including adult education. There are a number of educational facilities available to the community, which offer varying levels of educational programs, ranging from kindergarten to adult learning. These facilities include:

- Ear Falls Public School (grades JK-8);
- Red Lake District High School (grades 9-12), located in Red Lake³;
- Adult Learning Center - Literacy and Basic Skills, Ear Falls;
- Red Lake District Adult Learning Center (located at the Ear Falls 2000 Enterprise Centre, in Ear Falls); and,
- Contact North Distance Education.⁴

The Ear Falls Public School has a student population of approximately 150 students from Junior kindergarten (JK) to Grade 8 and offers full-time kindergarten programming. The school is staffed by nine teachers, one principal, one teaching vice-principal and four teachers' assistants. Presently, the school is operating at capacity. In 2012/2013 the school introduced iPads into JK to Grade 3 classrooms and Notebooks into Grade 4 to Grade 8 classrooms. This School Board initiative was to ensure that every student either has access to or is assigned their own device.

³ The North Eagle High School in Ear Falls was closed in 2007 (major upgrades were required for continued use). Students were relocated to the Red Lake District High School.

⁴ Chukuni Communities Development Corporation (CCDC) n.d.

Wabauskang First Nation bus their children to the school and are very supportive of the school. The entire school attends the First Nation annual Pow Wow.

A sports program is offered to students in Grades 4 through 8 and can include baseball, basketball, and soccer, skating and curling.

As is typical of many schools, volunteers enable the school to provide a free breakfast program, a “loonie” lunch program (cost \$1), provision of hats, mitts and snacks for kids that need them and a number of events throughout the school year. The school also enjoys an active school council of 6 to 10 participants.

Long has been the practice for students to be bussed to Red Lake for high school. Despite this long-term tradition, the transition from Grade 8 to high school is somewhat more of an adjustment for families and students as it involves travelling approximately one hour by bus outside the community. It is understood and accepted that catching the bus at 7:14 am in the morning is what youth must do to complete their high school education.⁵

The local “Kids Need a Ride” group fund raises annually to cover the costs of students travelling outside the regular bus schedule to enable them to remain after school for extracurricular activities, clubs, or sports.

2.2.1.4 Health and Safety Facilities and Services

Health Care

Health care services offered in Ear Falls are located in the Ear Falls Community Health Centre and serviced by the Ear Falls Family Health Team that:

“...commits to create a secure, responsive community oriented health care system dedicated to provide high quality, holistic health care”. (Sign posted at entrance to Health Centre).

The Health Team consists of one new full-time doctor , a roster of other doctors on a rotating basis, two registered nurses, one nurse practitioner, and various other health care specialists in the region that provide specific services (dietary advice, diabetes clinic, Alzheimer support, care giver support). A mobile Canadian National Institute for the Blind (CNIB) service is provided annually. There is a dental office available to the community,⁶ which offers part-time dental services (3 days/week). The Centre also offers community counseling (mental health and addictions), a prescription service, and a foot care program. A clinical pharmacist is available

⁵ “Ear Falls Kids (A Short Documentary)” *YouTube*. 2012.

⁶ CCDC n.d., 211 Ontario North n.d.

once every two weeks. A new pharmacy opened on Highway 105 in September 2012 to provide retail and prescription services to the community five days per week.

Under the leadership of the current Executive Director, the Family Health Team has developed positive working relationships with the medical community in Red Lake thus enabling it to offer a wide range of services and coverage to Ear Falls. Further, the Family Health Team utilizes Tele-Health Ontario services and regular webinar/teleconference calls with other Family Health Teams in the region.

The Ear Falls Community Health Centre provides primary health services (e.g. stitches); however, the closest hospital is located 70 km north of Ear Falls in Red Lake, where more emergency services are available. Additional services, including an optometrist and an elderly extended care facility, are also available in Red Lake. The North West Community Care Access Centre, which has an office in Red Lake, also services Ear Falls. Firefly, with offices in Red Lake, provides a variety of services for children at the Ear Falls Community Health Centre. Services include: speech language pathology, supervised access services, child development, foster care support, and youth justice services. Firefly services the Ear Falls Public School directly providing speech therapy and other developmental services.

The Northwestern Health Unit (NWHU) (which serves the District of Kenora and Rainy River District) has a branch office located at the Ear Falls Community Health Centre, and offers the following services: Environmental Health; Family Health Services; Health Promotion, Chronic Disease Prevention; and Health Protection and Clinical Services.⁷ The Health Unit also has a strong working relationship with the Family Health Team. Flu clinics, immunizations, and the services of a public health nurse are provided.

Additionally, the CNIB van comes annually to Ear Falls to service patients on an appointment-basis.

Ambulance

The Ambulance service is staffed with one part-time and four full-time employees. The ambulance station; a two bay station, is located in Ear Falls. The Kenora District Service Board (KDSB) is responsible for the provision of ambulance services.

Ontario Provincial Police

The Ontario Provincial Police (OPP) detachment serves Ear Falls and is administered by the Red Lake detachment. Policing activities typically deal with motor vehicle accidents, traffic infractions, break and enter (mainly garages) and general mischief offences. Calls associated with the tourism industry include lost persons and sudden deaths.

⁷ CCDC n.d., 211 Ontario North n.d.

Fire Department

The Fire Department in Ear Falls operates a volunteer-based service with 14 trained fire fighters, and a Fire Chief. The Fire Chief maintains a salary and all fire fighters are paid honorariums for responding to calls. According to community interviews, the prevalence of shift-work in the community is problematic for recruiting and maintaining a trained volunteer-based staff.⁸

Mutual aid agreements are in place with Red Lake and Machin. Based on information collected during an interview with the Fire Chief, most calls they respond to are the result of motor vehicle accidents rather than structural fires. The Fire Chief holds several positions related to health and safety within Ear Falls including the Chief Building Officer, By-law Officer, Emergency Response Co-ordinator and is responsible for health and safety training. The Chief is also the President of the District of Kenora Mutual Aid Organization which encompasses an area including Pickle Lake, Kenora City, Dryden and Ignace. This organization meets in the spring and fall every year.⁹

2.2.2 Summary of Human Assets

2.2.2.1 Priorities and Key Issues

Ear Falls' Human Assets are closely tied to its resource-based economy. The closure of major employers in the mining and forestry sectors has resulted in a decline in employment opportunity with the parallel effect of triggering population decline. This was evident after the closure of the Griffith mine in 1986 and then again since 2006 to present with the downturn of businesses in the forestry sector. The population of Ear Falls, which peaked during the Griffith mine operations at approximately 2,200 individuals, is now less than half the size, currently standing at 1,026.

The lack of employment has resulted in a number of effects including out-migration of labour, households and youth. The proportion of retired people in Ear Falls is increasing, and youth retention continues to be a challenge. Ear Falls is thus dealing with a shrinking and at the same time aging population, and a declining skills base.

2.2.2.2 Community Aspirations

Despite the data that reveal a declining population and the associated challenges that are imposed on the community, there is pride in the community with regard to its quality of life and its close-knit, family-oriented community life-style.

⁸ Community Interviews 2012.

⁹ Interview with Fire Chief 2012.

The Township's strategic plan,¹⁰ as discussed in Section 2.1.3, has identified the following three objectives related to its vision, which articulates the communities' aspirations:

- growing the community to fully utilize the available infrastructure and service levels;
- attracting new investment in the community and maintaining existing businesses and residents; and,
- encouraging community involvement, pride and spirit.

Also noteworthy is that one of the three “high priority” actions identified by the Township is to plan for a community of 5,000 people. This leads to community aspirations which include making youth retention a priority, and ensuring adequate local training and educational opportunities.¹¹

2.2.2.3 Capabilities and Capacities within the Community

Ear Falls' strengths, with respect to its Human Assets, are the increasing number of residents completing secondary level education and attaining post-secondary certificates degrees and diplomas.

In terms of health care, although the community has to travel outside Ear Falls for some services, there appears to be an acceptance of this, according to community interviews. The community appears to have adapted well with the level of services available to them. The community is closely attached to their health care centre and would actively involve themselves in protecting it, should it be threatened in any way¹².

In summary, Ear Falls is a Township with solid strengths in its Human Assets, where residents take pride in themselves, their healthcare, education levels, sense of community and life-style.

¹⁰ Meridian 2011.

¹¹ Ibid.

¹² Community Interviews 2012.

HUMAN ASSETS PHOTO EXHIBITS



Ear Falls Health Center



CNIB Mobile Service



Ambulance Station



Ear Falls Public School



Red Lake High School



Subsidized Housing

2.3 ECONOMIC ASSETS

2.3.1 Economic Asset Indicators

The Economic Assets within a community include the monetary and financial related resources that people use to achieve their livelihood objectives. It includes cash or equivalents to individuals and or the community and the availability of financial and economic services that allow residents to manage their finances and wealth. Some of the more specific indicators within the category for Economic Assets include:

- Employment;
- Business Activity;
- Income;
- Tourism;
- Economic Development Services; and,
- Governance and Municipal Finances.

These indicators are described in this section, within the context of the Economic well-being of Ear Falls. A photo exhibit of Economic Assets is provided at the end of the section.

2.3.1.1 Employment

Table 2.3-1 provides Ear Falls labour force activity between 1996 and 2006. In 2001 the unemployment rate in Ear Falls was 8.7%. This was higher than the unemployment rate reported in Ontario (6.1%) but lower than the District of Kenora (11.1%). By 2006, Ear Falls' rate had declined to 2.8%, in part attributable to employment opportunities offered at the Ear Falls Sawmill and out-migration of skilled residents seeking jobs elsewhere.

Table 2.3-1 Ear Falls Labour Force Activity (1996-2006)

Labour force activity	1996	2001	2006
Total population 15 years and over	880	895	945
Employed	485	580	690
Participation Rate	64.2%	71.2%	75.7%
Employment Rate	N/A	66.5%	73%
Unemployment rate	14.2%	8.7%	2.8%

Source: Statistics Canada (1997, 2002, 2007)

The high unemployment levels in 1996 are a result of the closure of forestry and mining operations in both Ear Falls and Red Lake. An economic downturn experienced in 2008 and 2009 resulted in the closure of sawmills and logging/forestry industry companies as well as a decrease in the number of tourists visiting from the United States.¹³ This economic downturn would have resulted in a considerably higher unemployment rate, although data is not yet available for the Canada census year 2011. More recently however, increased employment at the gold mine in Red Lake and other has caused the unemployment rate to reduce considerably.

Note: The most recent census data (2011) are not published at this time.

2.3.1.2 Business Activity

Historically the key economic sectors for the Ear Falls labour force have been forestry and mining. Griffith Mine and South Bay Mine operated in the area until the late 1960s and early 1970s respectively. Forestry operations were also prevalent in the region. A wood processing facility operated in Ear Falls from 1997 to 2009.

Major Employers – Private Sector

The largest private sector employer for Ear Falls' residents is the Red Lake Gold Mine owned and operated by Goldcorp and located in Red Lake, Ontario. The mine is composed of two operating complexes: the Red Lake Complex and the Campbell Complex. The mines cover approximately 2,335 hectares within the District of Kenora and are accessible by Highway 105. Goldcorp provides employment for over 550 employees and contractors. R & W Timber Limited head quartered out of Dryden employs 20 people and their local office is located on Highway 105 in Ear Falls.

Major Employers – Public Sector

Public sector employers include the Township of Ear Falls, the OPP, Ontario Power Generation (OPG), Hydro One, and the Keewatin Patricia District School Board. Together, these constitute a major portion of the overall employment base.

Business and Services

Tables 2.3-2 and 2.3-3 below provides an inventory of local private businesses and services in Ear Falls. Most of these businesses demonstrate a strong service orientation within the community.

¹³ BCG Communications (BCG) 2010.

Table 2.3-2 Local Private Businesses in Ear Falls

Business Type	Name of Business
Accommodations and Restaurants	Aspen Place Apartments Hotel 105 Bar & Grill Kahooter's Kabins and RV Park Pine Ridge Campground Trillium Motel Pape's Diner
Food, Beverage and Drugs	Wilson's Fine Foods
Logging and Forestry	Ear Falls Sawmill – currently closed R & W Timber
Machinery, Equipment Supplies	Climie Welding Inc Martin Tool and Drive/Bumper to Bumper
Retail Stores	D&E Minnows Dare Hair & Tanning Epicure Selections Independent Consultant Four Season's Sport Shop Just for You Beauty Salon Liquor Control Board of Ontario Way North Leaves and Beans Puss N Pooch Kennels Rexall Guardian Rob's Ear Falls Marine Services Scentsy Independent Consultant Sears Canada Inc Stems N' Such Sun Valley Eggs
Hunting, Fishing, Tourism Related	Butch's Point Outpost Cat Island Lodge JR's Portage Bay Camp Excellent Adventures Outposts Gawley's Little Beaver Lodge & Outposts Gold Pines Camp – Lac Seul Goose Bay Camp Kayair Service Inc – Outposts Lac Seul Golden Eagle Lac Seul's Evergreen Lodge Little Canada Camp Pakwash Lake Lodge Wenasaga Lodge

Source: Township of Ear Falls n.d. (as of July 2012)

Table 2.3-3 Local Private Services in Ear Falls

Service Type	Name of Service
Transportation	Kabeelo Airways Kayair Service Lac Seul Airways
Service Stations	G.S. Gas Service Pearson Auto and Sport Smitty's Sports and Service The Pit Stop
Construction and Contracting	Bill Burdeney Carpentry Chukuni Sanitation Inc
Consultants	Jerry Williamson – Prospector Jim Buckner - Prospector
Accounting	Elizabeth Ross
Financial Institutions	Copperfin Credit Union
Printing, Publishing and Advertising	The Northern Sun – District Newspaper
Communications and Media	CBQ-CBC Radio CKDR Radio TBayTel

Source: Township of Ear Falls n.d. (as of July 2012)

2.3.1.3 Income

The median income of the population (15 years and over) in 2000 and 2005 was \$21,000 and \$39,149 respectively. These values are higher than the median income reported for Ontario (\$27,258 in 2005) and the District of Kenora (\$20,291 in 2000; and \$23,667 in 2005). In 2000 the median income for Ear Falls was lower than the median income reported for Ontario (\$24,816).

Table 2.3-4 provides median household income for 2000 and 2005. The median household income in 2000 and 2005 was \$55,553 and \$70,293 respectively. These values are higher than the median household income reported for Ontario and the District of Kenora in 2000 and 2005. Although not yet confirmed these high household incomes may be directly attributable to the number of residents employed at the gold mine in Red Lake.

Table 2.3-4 Median Household Income in Ear Falls, District of Kenora and Ontario (2000 and 2005)

Median Household Income – All Households	2000	2005
Ear Falls	\$ 55,553	\$ 70,293
District of Kenora	\$ 46,131	\$ 52,750
Ontario	\$ 53,626	\$ 60,455

Gender seems to play an important role when it comes to income; males, on average make twice as much as females as reported by Statistics Canada:

- Median income in 2005 of males 15 years and over - \$52,622
- 2006 male labour force (2006) – 360
- Median income in 2005 of females 15 years and over - \$23,833
- 2006 female labour force (2006) – 355

Note: The most recent census data (2011) are not published at this time.

2.3.1.4 Tourism

Recognized in the *Ear Falls Official Plan* as one of the contributors to the community's economic base, the potential for tourism has been identified in several studies.¹⁴ During a community branding workshop several marketing goals were identified including:

- developing Ear Falls into a four-season tourism destination;
- attracting economic diversity to the Ear Falls area;
- developing a stable economy not dependent on cyclical, resource based industry;
- maintaining unique attributes (friendliness, caring, crime free, at one with the environment); and,
- enhance wilderness opportunities.¹⁵

The review of the strengths and opportunities presented in the *Phase 3 Marketing Plan* report identified opportunities related to tourism development such as offering the best hunting and fishing in Ontario, wildlife viewing, and other wilderness experiences.¹⁶

¹⁴ Ear Falls 2006.

¹⁵ BCG 2010.

¹⁶ Ibid.

A 2003 Business Retention and Expansion study also highlighted tourism as an important part of the economic picture of Ear Falls. This study also identified similar community strengths such as its natural resources, access to outdoor recreation, and remoteness.¹⁷

The tourism activity in Ear Falls is predominantly seasonal and highly dependent on the natural resources. Lac Seul hosts a number of the lodges and resorts that cater to fishing and hunting activities and fly-in opportunities. Clientele are typically repeat customers, predominately men from the U.S. and to a lesser degree families that have been coming to the camp for several decades. It is common to see multi-generations (up to 4) of a family coming. The demographic is aging and fewer younger fishermen are coming to replace those no longer able to come. In recent years the tourism industry has also faced challenges as a result of an aging clientele, a lower U.S. dollar, and the economic downturn experienced in the U.S.

Historically the majority of camps were owned and operated by Americans. Given their seasonal nature, the tourism operators and their clients had limited interaction with Ear Falls; flying in with all their provisions at the beginning of the season and flying out in the fall. Ownership is changing, however, as more Canadians purchase properties from retiring owners. Although new owners do try to shop locally from Ear Falls businesses; many supplies are purchased from larger centres such as Dryden, Winnipeg or Thunder Bay. It is still a common practice for the clientele to bring most of their provisions with them.

Public Beaches

Waterfront Park is the location of many community special events. Public beaches are available in Waterfront Park located at the eastern end of Ear Falls along the English River and in nearby Pakwash Provincial Park which contains a 1.5 km stretch of sandy beach.¹⁸

Camping

Camping facilities are provided in Pakwash Provincial Park. Facilities include serviced campsites, restrooms, and showers. In addition there are lodges located on the shoreline of Lac Seul and English River offering camping in the summer.

Fishing and Hunting

Ear Falls offers many opportunities for fishing and hunting. The English River System and Lac Seul contain a variety of fisheries including walleye, pike, muskie, trout and bass. There are a number of resorts and lodges that provide access to fishing areas.¹⁹ Many of the lands suitable

¹⁷ CCDC 2003.

¹⁸ Sunset Country Travel Association n.d.

¹⁹ Ibid.

for hunting black bear, moose, grouse and duck are accessible by road. Outfitters also provide hunters with the option to fly to remote areas to hunt.²⁰

Adventure Tours

There are 11 outfitters at Ear Falls which include lodges, campgrounds and RV parks. Outfitters operate fly-in camps, spring through fall. There are also a variety of wilderness experiences, for example, hunting, fishing, snowmobiling and canoeing.²¹ Ice fishing is a popular winter activity in the area.

Cultural Tourism

The District of Kenora Resource Mapping Project 2011, which was commissioned by the Dryden Development Corporation, "...formed the groundwork for regional economic diversification" and flagged cultural tourism as the leading strategy element.²² The project identified and mapped cultural tourism resources in the region and access to this database is provided through a designated website, www.culturaltourismmapping.ca. Ear Falls was one of the communities that participated in this work. Table 2.3-5 below was extracted from the Mapping Project report and shows the summary of cultural tourism resources within close proximity to Ear Falls.

Table 2.3-5 Summary of Cultural Tourism Resources in the Ear Falls Area

	Ear Falls
Creative Cultural Industries	3
Community Organizations	0
Spaces and Facilities	0
Cultural Heritage	4
Natural Heritage	3
Festivals and Events	9
Additional Resources	62
Total	81
Cultural Occupations	1

Source: Insights Northwest 2011

²⁰ Sunset Country Travel Association n.d.

²¹ BCG 2010.

²² Insights Northwest 2011.

2.3.1.5 Economic Development Services

Although economic diversification is supported by Ear Falls as evidenced by the Official Plan (2006) and more recently the Strategic Plan (2012), economic development services have varied over time based on whether a Chamber of Commerce or an economic development office was operating.

Economic Development Committee

In 2011, Ear Falls formed an Economic Development Committee (EDC) with the mandate “to explore short and long-term economic development strategies”.²³ The EDC which serves Ear Falls, Red Lake and surrounding area, has a joint economic development strategy with a focus on mining, forestry, tourism and energy development.²⁴

The Northwestern Ontario Joint Task Force

The Northwestern Ontario Joint Task Force released its *Regional Economic Development Planning Zones Pilot Project (March 2012 - Final Draft)*, with the aim to further regional economic planning via the application of best practices and frameworks of strategic economic development. A key objective of the Task Force’s Report was to provide communities in the region with a focused and collaborative approach to economic growth.²⁵ Project findings pointed out the need for:

- a clear and consistent vision for the region;
- a strategy to rebrand northwestern Ontario;
- rebalancing decision making and control to occur more at the local level;
- building on area strengths around unique resources and capabilities; and,
- continuing the progress of economic diversification.

Northwest Business Centre

The Northwest Business Centre also provides a number of services focused on youth entrepreneurs, start-up businesses and business growth. A range of support is offered including: business planning, business education and training, business registration, e-business resources, grant and funding assistance, marketing research and marketing skills, and staff hiring. The Centre’s website acts as a portal for various government programs, resources and tools. Offices for the Centre are located in Kenora and Dryden.

²³ Township of Ear Falls 2011.

²⁴ CCDC n.d.

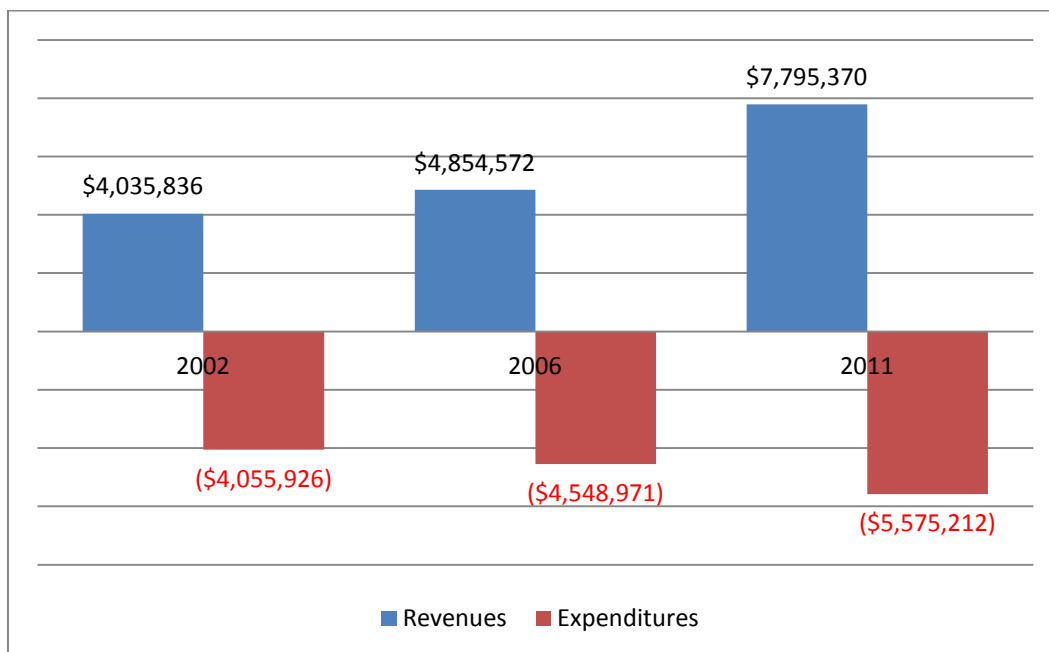
²⁵ Northwestern Ontario Joint Task Force 2012.

2.3.1.6 Governance and Municipal Finances

Ear Falls is governed by a Town Council, consisting of a mayor and four councilors. At the last municipal election, held in November 2010, a new Mayor and all new Councilors were elected. The Council meets on the first and third Wednesday of every month. Meetings are held at the Ear Falls' Council Chambers located at 2 Willow Crescent.²⁶

The operating revenues and expenditures of the Township over the period 2002 to 2011 are shown in Figure 2.3-1.

Figure 2.3-1 Operating Revenues and Expenditures of the Township (2002 to 2011)

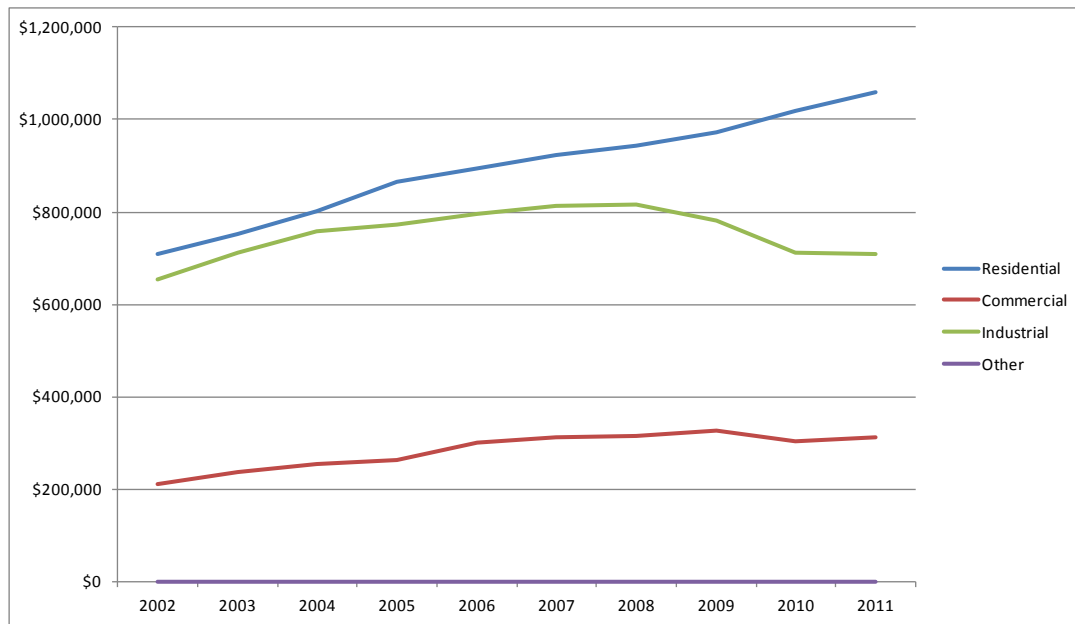


Operating expenditures have increased steadily from \$4 million in 2002 to \$5.6 million in 2011 (an increase of \$1.6). Revenues after 2006 have shown an increase (in the order of 60%) from \$4.8 million to \$7.8. However it is noted that the revenue figure in 2011 reflects the receipt of grants for the new municipal building. If the latter monies were netted out the revenue total would be \$4,442,196.

Over the same time frame the tax base of the municipality has risen from just over \$1.5 million to just over \$2 million (Table 2.3-6). As the graph below indicates there has been a higher rate of increase in the tax base since 2008 in the money derived from residential uses and a decrease in money derived from industrial uses (Figure 2.3-2).

²⁶ Township of Ear Falls n.d.

Figure 2.3-2 Ear Falls Municipal Property Tax (2002 to 2011)



The total assessment base for 2011 is approximately \$56 million²⁷.

Table 2.3-6 Ear Falls Municipal Property Tax (2002-2011)

	Residential	Commercial	Industrial	Other*	Total
2002	\$709,985	210,993	\$655,239	\$0	\$1,576,218
2003	\$753,742	\$236,799	\$713,318	\$0	\$1,703,859
2004	\$802,569	\$253,570	\$758,815	\$0	\$1,814,954
2005	\$865,601	\$263,723	\$773,823	\$0	\$1,903,147
2006	\$894,912	\$300,466	\$797,077	\$0	\$1,992,455
2007	\$923,087	\$311,367	\$814,515	\$0	\$2,048,969
2008	\$944,391	\$314,550	\$816,643	\$0	\$2,075,584
2009	\$972,727	\$326,150	\$782,116	\$416	\$2,081,409
2010	\$1,017,493	\$303,919	\$712,468	\$398	\$2,034,278
2011	\$1,058,401	\$312,534	\$709,904	\$381	\$2,081,220

Source: MMAH FIR (2002, 2003, 2004, 2005, 2006, 2007, 2008, 2009, 2010, 2011)

*Residential/Farm (tax rate education only)

²⁷ MMAH FIR 2011.

Taxes owing at the end of the year represented approximately 15% of the monies levied.

Based on the 2011 MMAH FIR, long-term liabilities in the municipality stood at approximately \$1.272 million and the 2011 cost of servicing this debt was \$93,361. Going forward over the next five years, the projected debt repayment schedule is shown below (Table 2.3-7). The Township's annual debt repayment limit is calculated to be \$710,370 and all of the projected payments over the next five years are well below this ceiling.

Table 2.3-7 Ear Falls Projected 5-Year Debt Repayment Schedule (2012-2016)

	Principal	Interest	Payment
2012	\$146,365	52,092	\$198,457
2013	\$149,670	\$46,998	\$196,668
2014	\$153,141	\$41,666	\$194,807
2015	\$156,785	\$36,090	\$192,875
2016	\$88,253	\$30,254	\$118,507
Total	\$694,214	\$207,100	\$901,314

2.3.2 Summary of Economic Assets

2.3.2.1 Priorities and Key Issues

Since 1996, the labour force within the community has been growing and the unemployment rate has been declining. These trends are attributed to the large number of Ear Falls residents employed outside the community and specifically at the gold mine in Red Lake. In addition to those working in Red Lake, there is another contingent that works beyond the community in remote fly-in mining and forestry operations in northern Ontario, Manitoba and Alberta.

The remaining private sector employers are largely in the tertiary service part of the economy. Food services and retailing, accommodation, tourism outfitters, general merchandise retailers and automotive service stations largely define the commercial fabric of the community.

The public sector employers of note in the community include the Township itself, the OPP, OPG, and the Keewatin District School Board. Household incomes in the community were in the order of \$70,000 in 2005 which is higher than those for the Province and District of Kenora. Again, this is likely due to the large number of residents employed in relatively high wage jobs at the gold mine or affiliated businesses in Red Lake.

The Community recognizes the cyclical nature of the mining and forestry industries and has identified the need to diversify its economy in order to be less dependent on these industries. Tourism was identified as an avenue for economic diversification; however, in Ear Falls it is predominately seasonal. The Development and Implementation of a Marketing Plan (2010) identified a number of actions required to prepare Ear Falls for a targeted marketing campaign; however, it also recognized that it would take some time before Ear Falls could position itself to deliver the “Ear Falls experience”.²⁸

Tourism outfitters operating many of the fly-in/out camps have a minimal interaction with community businesses and the community generally, and as a result the economic ties between this sector and the community of Ear Falls are weak.

Ear Falls formed an EDC in 2011 to look at short and long-term economic development.

In 2011, municipal revenues totalled slightly more than \$7.8 million (including government grants) and expenditures were in the order of \$5.6 million. The long term debt being carried by the municipality was in the order \$1.3 million which translates to approximately \$2,240 per household. The annual debt carrying capacity of the municipality is in the order of \$710,000 and the schedule of annual payments to service this debt over the next five years is well below this ceiling.

2.3.2.2 Community Aspirations

Ear Falls fully recognizes that economic growth is essential to its well-being. Mining and forestry represent “Big Ticket” opportunities but they are somewhat beyond the control of the municipality. Although Ear Falls and the surrounding area have an abundance of natural resources, national and world markets conditions need to be correct for investment to be realized in these sectors. Tourism on the other hand has more modest investment requirements and it is less influenced by the same pressures that affect commodity markets. While there are a number of tourism businesses in and around the community, market fluctuations and economic conditions also affect this sector. From an economic development perspective, it is acknowledged that tourism is an important sector but it is also recognized that by itself it does not have the scale and economic clout needed to stabilize and grow the economy of Ear Falls.

The community has aspirations to grow the tax base but once again without commercial and/or industrial investment and jobs this will be difficult. Fifty one percent of the municipal tax base is currently premised on residential properties. The industrial tax base which is largely attributable to the OPG accounts for 33%.

²⁸ BCG 2010.

Ear Falls has sufficient water, sewage and power infrastructure capacity to enable community residential, commercial and industrial growth. Notwithstanding the preceding however, the access road to the Community (Highway 105) may need upgrading to make the community attractive to certain types of industries.

Positioning the Township for growth is a central focus of its strategic plan. Within this Plan aside from the direct pursuit of business the community also acknowledges that it needs to make youth retention a priority, ensure that serviced residential lots are available and ensure adequate training and educational opportunities for its residents. In addition, the Township needs to ensure that it can remain financially sustainable over the long-term. The development of an asset management plan will assist in determining the major expenditure needs for infrastructure and services and how best to finance them.

2.3.2.3 Capabilities and Capacities within the Community

At the present time, as acknowledged previously, the community wants growth and knows that it needs to be proactive in “making it happen”.

The infrastructure capabilities are sufficient to allow the community to more than double in size. To realize major growth, however, the Township may require upgrades to Highway 105 and its airport.

The community has experience with cyclical nature of resource-based industry and this has given them a certain resiliency to the current downturn in mining and forestry. When industry closures in these sectors occurred in the past, Ear Falls residents rallied together to support one another and the community at large.

ECONOMIC ASSETS PHOTO EXHIBITS



Retail



Mining Operations in the District



Tourism Activities



Tourism Activities



Chukuni Development Services

2.4 INFRASTRUCTURE

2.4.1 Physical Asset Indicators

The Infrastructure or Physical Assets within a community include the basic infrastructure needed to support livelihoods and the tools or equipment that people use to function more productively. Infrastructure is a public good and improved access to it increases community well-being, human health and quality of life. Some of the more specific indicators within the category for Physical Assets include:

- Land Use;
- Housing;
- Municipal Infrastructure and Services; and,
- Transportation Infrastructure.

These indicators are described in this section, within the context of the Physical well-being of Ear Falls. A photo exhibit of Physical Assets is provided at the end of the section.

2.4.1.1 Land Use

The Ear Falls Townsite is the only urbanized area within Township. The primary settlement area of Ear Falls consists of a built up area located along the shores of the English River and the north shores of Lac Seul. Within the Ear Falls Townsite there is substantial residential development with provisions for commercial, industrial and institutional services.²⁹ There are also serviced vacant lots available to accommodate future growth. The physiography and bedrock geology of the area serve as constraints to new development and expansion of existing development areas.³⁰

Permitted uses in areas designated Rural are recreation, conservation, commercial and bait fisheries.

2.4.1.2 Housing

Statistics Canada (census data for 2011) reports the total number of private dwellings as 505. The majority of homes reported in the 2006 census data were built prior to 1986 accounting for 94% of the private dwellings at that time.

²⁹ Township of Ear Falls 2006.

³⁰ Ibid.

Table 2.4-1 provides data regarding dwellings by type for 1996 and 2006. These data indicate that the number of occupied private dwellings has increased from 1996 to 2006. Housing is predominately low density, with few multi-residential units and no high rise apartment-style dwellings. Many are trailers converted to permanent residences. The mix of dwelling types, for the most part, has not changed from 1996 to 2006.

Table 2.4-1 Ear Falls Dwellings by Type 1996 and 2006

Illustrative Indicators	1996	2006
Total private dwellings occupied by usual residents	430	470
Single-detached houses - as a % of total occupied private dwellings	58.1%	72.3%
Semi-detached houses - as a % of total occupied private dwellings	14%	10.6%
Row houses - as a % of total occupied private dwellings	3.5%	4.3%
Apartments, duplex - as a % of total occupied private dwellings	0.0%	2.1%
Apartments in buildings with fewer than five storey's - as a % of total occupied private dwellings	2.3%	4.3%
Apartments in buildings with five or more storey's - as a % of total occupied private dwellings	0.0%	0.0%
Other dwellings - as a % of total occupied private dwellings	19.8%	6.4%

Source: Statistics Canada 2012a

Property Sales and Rentals

Table 2.4-2 provides data regarding dwellings (total number and percentage) by tenure, for 1996, 2001 and 2006.

Table 2.4-2 Ear Falls Number of Dwellings by Tenure

Number of dwellings by Tenure	1996	%	2001	%	2006	%
Number of owned dwellings	310	72.1	315	71.6	365	77.7
Number of rented dwellings	120	27.9	125	28.4	105	22.3
Total	430		440		470	

Source: Statistics Canada 2012a

Note: The most recent census data (2011) are not published at this time.

Property Assessment

Table 2.4-3 provides property assessment values every two years from 2002 to 2010.

Table 2.4-3 Ear Falls Property Assessment Values

	2002	2004	2006	2008	2010
Residential	\$31,882,416	\$32,420,360	\$35,589,040	\$35,835,395	\$38,736,069
Commercial	\$3,851,089	\$4,387,880	\$5,230,805	\$5,276,450	\$5,643,558
Industrial	\$7,907,300	\$8,685,700	\$9,148,900	\$9,381,900	\$9,588,500
Other	\$0	\$0	\$0	\$0	\$0

Source: MMAH FIR 2002, 2004, 2006, 2008, 2010

Based on the tax assessment numbers set out in Table 2.4-3 above, it is apparent that the municipal tax base is dominated by residential uses. The contribution of industry and commercial uses in combination is 40%. In order for the community to grow in a sustainable manner, this balance will need to be adjusted so the latter plays a stronger role in the tax mix going forward.

Building Permits

According to the 2011 FIR building permits amounted to approximately \$2.5 million with most of this sum attributable to the construction of 11 new homes.

The Township is limited in developing residential waterfront lots in the portion of the Township that includes Lac Seul and the bald eagle habitat due to development restrictions on these protected areas.

2.4.1.3 Municipal Infrastructure and Services

Electricity and natural gas distribution and natural gas are provided by Hydro One and Union Gas respectively. Ear Falls obtains its water supply from the English River through a water treatment plant with a rated population capacity of 5,000 residents. The plant is currently running at 20% of its capacity. A water tower, located on Murray Street, supplies Ear Falls with its reservoir needs. The water tower has a 900,000 Imperial gallon capacity with a 500,000 Imperial gallon useable volume. The Ear Falls sewage treatment plant has a capacity to serve a population of 5,000.

Ear Falls contracts a local landfill site operator for regular curbside urban and rural waste collection. Currently, landfill capacity is between 40 and 150 years. Recycling initiatives tried in the past were unsustainable due to the expense of the service; consequently, there is no recycling program in the community.

2.4.1.4 Transportation Infrastructure

Ear Falls has an unmanned airport that is predominately used by the hunting and fishing camp owners. There is also a float plane facility outside the settlement area on Lac Seul which is again used by hunting and fishing camp operators. The nearest commercial airport is located in Red Lake.

While serviceable for all current uses, Highway 105 is the only road access to the Community and passes through the Ear Falls settlement area.

Caribou Bus Lines provides bus service to Ear Falls five days a week from Kenora.

During the Griffith mine era, Ear Falls was serviced by a rail spur off the main CNR line which is located approximately 90 km south. When the mine closed, the Ear Falls rail line was removed and the land for the right-of-way sold.

2.4.2 Summary of Physical Assets

2.4.2.1 Priorities and Key Issues

Ear Falls is comprised of a settlement area and a surrounding rural area that is largely owned by the Crown. The settlement area occupies the shores of the English River and Lac Seul. In the Crown land areas, typical uses include hunting and fishing camps, aggregate extraction and forestry operations.

The Township has approximately 50 serviced lots in the settlement area that can be used for residential development but at the moment the market for these is limited. Approximately, 11% of the existing housing stock in the community is for sale and turnover is best for properties priced below \$100,000.

In 2011, the total value of building permits issued in the Township was in the order of \$2.5 million and of this amount 92% was accounted for by 35 residential properties. This indicates that people are investing in housing either through improvements or in more limited cases new builds.

Highway 105 is the single access route into Ear Falls which poses a risk for the movement of people, goods and services should the road become blocked for an extended period of time, as a result of a motor vehicle accident or extreme weather event.

Access by air is possible via the Ear Falls Airport, but the facility is currently abandoned. Current use is predominately by the hunting and fishing camp owners. There is also a float plane facility outside the settlement area on Lac Seul and again this facility is largely used by hunting and fishing camp operators.

Ear Falls is very mindful of the revenue generating capacity of its tax base and thus expenditures are carefully balanced.

2.4.2.2 Community Aspiration

The overriding aspiration for the community is to foster strong economic growth. This provides the catalyst for future prosperity. Economic growth will shape the community physically, socially and financially. It enables real estate development, diversifies the property mix and enhances property values and these in turn build the tax base which enables the municipality to maintain and grow its infrastructure and services. Economic growth is seen as an engine whose energy can touch all parts of the community.

Notwithstanding all of the above, the residents and leadership of Ear Falls have high regard for the natural environment in which they are located in. Development if it occurs will need to be done with careful consideration of the environment and the quality of life it affords. The local environment is very much part of the physical and psychological make-up of the community.

2.4.2.3 Capabilities and Capacities within the Community

Ear Falls has sufficient water and sewage treatment capacity to handle a community of 5,000 people. The landfill also has sufficient capacity to meet needs of an expanded community well into the future.

There are 50 serviced lots ready to accommodate development.

Highway 105, a two-lane road, provides transportation access into Ear Falls. The Township has land and water facilities to support air traffic.

INFRASTRUCTURE PHOTO EXHIBITS



Housing



Housing



Water Treatment Plant



Township Building
(Administration, Library, Fire Station, Day Care)

2.5 SOCIAL ASSETS

2.5.1 Social Asset Indicators

The Social Assets within a community include the social and community activities in which people participate and the resources that they draw upon in pursuit of their livelihood objectives. These activities and resources create networks within and between communities, enhance cohesion, and generate trusting relationships and community pride. Some of the more specific indicators within the category for Social Assets include:

- Diversity of Population;
- Cultural Heritage Resources;
- Community Facilities and Programs; and,
- Social Services and Organizations.

These indicators are described in this section, within the context of the Social well-being of Ear Falls. A photo exhibit of Social Assets is provided at the end of the section.

2.5.1.1 Diversity of Population Composition

Table 2.5-1 provides Aboriginal and non-Aboriginal identity population, immigrant³¹ and non-immigrant population numbers for 1996, 2001 and 2006. The Aboriginal population more than doubled from 1996 to 2001 from 120 to 275; however, by 2006 the Aboriginal population decreased to 115, even lower than the recorded number in 1996.

Table 2.5-1 Aboriginal, Non-Aboriginal, Immigrant and Non-immigrant Population in Ear Falls (1996-2006)

Illustrative Indicators	1996		2001		2006	
Aboriginal identity population	120	10%	275	24%	115	10%
Non-Aboriginal identity population	1,045	90%	875	76%	1,035	90%
Immigrant population	90	8%	60	5%	65	6%
Non-immigrant population	1,075	92%	1,085	94%	1,085	94%

Source: Statistics Canada 2012a

Note: The most recent census data (2011) are not published at this time.

³¹ Statistics Canada (2012a) defines “immigrants” as persons residing in Canada who were born outside of Canada, excluding temporary foreign workers, Canadian citizens born outside Canada and those with student or working visas.

2.5.1.2 Cultural Heritage Resources

There is a high potential for historical sites along the English River and tributaries in the Ear Falls area. These are also small (usually less than one hectare in size) archaeological sites concentrated on the shores and islands of Lac Seul along the Chukuni River. As provided in the Ontario Archaeological Services Database, there are 62 known archaeological and historical sites in the Ear Falls area. Of the 62 known sites in the area, nine include information beyond location: five sites are identified as pre-contact (prior to European arrival) Aboriginal campsites; two sites are identified as pre-contact Aboriginal activity sites (i.e. Shield Archaic period fishing station and Woodland period chipping station); and two sites are identified as Euro-Canadian railway/marine sites. There are no national historic sites in the Ear Falls area.³² Although relatively unknown, Aboriginal rock paintings are located in the area; for example, a concentration of Anishinabek rock paintings are found in Pakwash Provincial Park.

The Ear Falls community museum is presently closed with all artefacts stored at the Township offices. A commitment has been made by the Township to provide museum space in this new building; however, a time frame has not been provided.

2.5.1.3 Community Facilities and Programs

Programs and facilities not only provide a social focal point for the local community, they also help to foster relationships and ties with surrounding communities. Recreational tournaments are supported by the availability of recreational facilities and are important to the social fabric of the community.

Key community programs and facilities that are available in Ear Falls are listed in Table 2.5-2 and Table 2.5-3. Special events in the community are provided in Table 2.5-4.

³² Golder Associates 2011 (prepared for NWMO).

Table 2.5-2 Ear Falls Community Programs

Programs	Description
Girl Guides of Canada	Invites girls to challenge themselves, meet friends and make a difference in the world.
Gun Club	Organized interest group.
Hockey Club	Separate from the Minor Hockey Association. Approximately 20 players in the 7-16 age range. Responsible for canteen at the arena.
Lions Club	Empowers volunteers to serve their communities, meet humanitarian needs and encourages peace.
Minor Hockey Association	Part of Hockey Northwestern Ontario which is one of 13 member branches of Hockey Canada. Includes minor hockey as well as certification programs.
Royal Canadian Legion Branch 238 & Ladies Auxiliary	Serves veterans, including military and RCMP members and their families to promote remembrance and to serve the community and country by supporting programs for seniors, housing, long-term care, education, sports etc.
Scouts Canada	Contributes to the education of young people to help build a better world where people are self-fulfilled as individuals and play a constructive role in society.
Whispering Pines Seniors Centre	The centre provides recreational and social programs.
Figure Skating Club	Skate Canada member club, run by volunteers and paid coaches.

Table 2.5-3 Ear Falls Community Facilities

Facilities	Description
Chukuni Community Development Corporation	Funded by Industry Canada for the purpose of creating and maintaining employment through small business development. Goal is to help strengthen the economy of Ear Falls and surrounding area by assisting local entrepreneurs.
Ear Falls Cross Country Ski Area	25 km of groomed trails.
Ear Falls Golf and Country Club	Municipal golf course. Nine holes (36 par), driving range, practice green, clubhouse, pro shop, restaurant. It is a licensed facility.
Ear Falls Recreation Centre	Includes arena, curling rink (now closed) and fitness centre. In winter activities include broomball, hockey and figure skating. In the summer the ice rink is used for basketball, shuffleboard, carpet bowling, badminton, and floor hockey. Fitness centre has various cardio equipment and free-weights.

Table 2.5-3 Ear Falls Community Facilities (Cont'd)

Facilities	Description
Griffith Mine Interpretive Site	Located 20 km north of Ear Falls. Features hiking/biking/ATV trails as well as wildlife observation areas and interpretive sites. Trails span entire area of mine, winding around the former open mine pits.
Library	Free access to computers, books, books on tape and CD. Free internet training is available. Also provides printing/photocopying/laminating/faxing services and digital camera rental. Community programs include story and craft times.
Multiple trails	Snowmobiling, hiking, skiing etc.
Playgrounds	Three playgrounds in town, one on Balsam Ave., one on Scott St., and one on Birch Dr.
Public boat launches	Three public boat launches maintained by the Township of Ear Falls: Gold Pines (access to Lac Seul); Dutchies' Landing (access to English River); and Wenesaga Landing (access to Wenesaga Lake).
Royal Canadian Legion Branch 238 & Ladies Auxiliary	Facility provides recreation and social programming in two Meeting rooms, kitchen and bar.
Whispering Pines Senior Centre	Facility provides recreational and social programming for seniors in the community.

Table 2.5-4 Ear Falls Community Special Events

Community Special Event	Description
Eagle Days	Summer celebration held in August featuring an off-road poker derby, golf tournament, fishing derby, dinner and dance.
Fireman's Ball	May
Pakwash Play Day	Family event held in August at Pakwash Provincial Park including food, activities and entertainment for kids.
Theatre 105	Community theatre; 25 productions over the last 24 years. Generally shows are put on once a year in April.
Trout Forest Music Festival	Summer festival held in August. It celebrates Canadian Talent and features more than 30 musicians from across Canada. Includes workshops, creative arts selection, food and camping. Held at Waterfront Park.
Winterfest	March

Despite the wide range of available facilities and programs, Ear Falls is currently facing reductions, due in part to lack of participation and of funding symptomatic to decreasing population. For example, the arena opens its ice rink substantially later than other municipalities in the area which has prompted residents to use resources in neighbouring communities, particularly Red Lake (in November 2011, there were 12 children from Ear Falls travelling to Red Lake to participate in hockey). A shortened ice season may also result in a less competitive hockey team due to reduced practice time.³³ Additionally, the curling club did not use the facilities for the 2009/2010 season due to declining member base and funding.

Ear Falls encourages and promotes use of its recreation facilities through an annual pass. The pass provides unlimited access to the golf club and recreation centre throughout the year at a 2012 cost of \$135.00. Public usage of the recreation centre is scheduled outside of the rental periods for the skating and hockey clubs.

Other recreational opportunities are readily available in the outdoors such as swimming at local beaches, snowmobiling or ATV trail riding, canoeing or boating and fishing and hunting. In a documentary prepared by a youth in Ear Falls, recreational activities enjoyed by many youth in the community included a spectrum of indoor (e.g. skating) and outdoor (e.g. building a snow quincy) activities.³⁴

Social Services and Organizations

Ear Falls has several social services and organizations that serve various interests in the community. Table 2.5-5 lists and briefly describes the many social services and organizations available to Ear Falls. These services and organizations serve to bolster the social fabric within the community and help to foster the sense of closeness and community support, which Ear Falls is very proud of. It is important to note that Ear Falls has close ties with Red Lake, and as such shares social services. This is further evident in Table 2.5-5.

There are four Churches in the Community:

- Ear Falls Chapel (Mennonite);
- St. Paul the Apostle Anglican Church;
- St. Theresa's Roman Catholic Church; and,
- United Church of Canada offers worship services in private homes with a part time minister providing leadership at the services on Sundays.

³³ The Corporation of the Township of Ear Falls 2011. November 16 Council #21 Minutes.

³⁴ "Ear Falls Kids (A Short Documentary)". [YouTube](#). 2012.

Table 2.5-5 Social Services and Organizations in Ear Falls

Service / Organization	Description
Community Counselling and Addiction Services (CCAS)	Located in Ear Falls and operated by Red Lake Margaret Cochenour Memorial Hospital Corporation. Treatment is offered for addiction and mental health. Sessions are typically conducted at the Red Lake or Ear Falls offices with accommodation for special situations.
Contact North	Post-secondary, distance education and training centre. Access centre equipped with distance education technologies such as audio-conferencing, video-conferencing, web-conferencing, computer workstations and internet – allows individuals to connect to programs and courses. Staff provides technical and moral support.
Ear Falls Best Start Hub	Offers children and families a place to meet, learn, play and grow together. Children and parents come together to participate in various activities. Monday to Friday 9:00 am to 3:00 pm.
Ear Falls Child’s View Day Nursery	Provincially licensed and inspected day care. Day Care Program accepts children 18 months to 6 years old. School Age Program accepts children up to 10 years old.
Ear Falls Healthy Living Coalition	Located in Ear Falls.
Ear Falls Non-Profit Housing Corporation	Located in Ear Falls.
Family Resource Program	Parent resource and toy library.
New Starts Women Shelter	Provides shelter for abused women and their children. Offers life skill training and support for women looking to start a new life.
Ontario Works	Administers a social assistance program to help individuals and families who are financial need. Includes financial and employment assistance as well as offering benefits and extended health benefits. Ages 16 and up.
Red Lake Career and Employment Services	Operates out of Ear Falls 2000 location in Ear Falls Plaza on Thursday’s from 9:30 am to 3:00 pm.
Red Lake District Adult Learning Centre	Office in Ear Falls and Red Lake. Offers literacy, numeracy, and essential skills services that help learners transition to their goals of employment, secondary-school, post-secondary education or independence. 19 years of age and older.
Seniors Home	Whispering Pines Seniors ad hoc Committee has requested that Council explore the option to build a 6-10 unit Senior’s Housing Complex, with two-bedroom units, possibly at the Old Municipal Office site.

Media and communication services also help to strengthen the social ties within the community. They communicate information from within the community and information on a regional scale. While Ear Falls does not have its own local paper, there are other media and services available including:

- Ear Falls website – maintained and operated by the Municipality;
- The Northern Sun News – regional newspaper serving Red Lake, Ear Falls and northwestern Ontario;
- The Dryden Observer – local paper focused on Dryden, Ontario;
- The Chronicle Journal – regional newspaper serving northwestern Ontario;
- CBQ-CBC Radio – based out of Thunder Bay; and,
- CKDR 92.7 FM Dryden – Dryden local radio station, with rebroadcast in Ear Falls.

2.5.2 Summary of Social Assets

2.5.2.1 Priorities and Key Issues

Decreases in recreational services have affected the community of Ear Falls. Youth sports, particularly hockey and figure skating are important resources to the local community and families with young children. The declining population has resulted in fewer children participating in a hockey and figure skating programs. Reductions in these services have already been experienced by the shortened ice season at the Recreational Centre and may have negative repercussions to the Social Assets and fabric of the community.

Although faced with the economic reality of a declining tax base, the need to foster recreational and community opportunities for youth is a priority for Ear Falls. Providing these recreational opportunities will help retain youth and draw families to the area. It is plainly recognized that facility closures and decreased program availability are detrimental to these efforts.

2.5.2.2 Community Aspirations

Ear Falls recognizes the importance of recreational opportunities to the quality of life and social fabric of the community. Youth-focused initiatives and community programs are key priorities.

2.5.2.3 Capabilities and Capacities within the Community

A wide range of existing recreational facilities and programs, as well as services and organizations are available to support the social life of the community. Many of these organizations are strongly supported by leaders and volunteers drawn from the community. Ear Falls is a proud community built on the strength of its people.

SOCIAL ASSETS PHOTO EXHIBITS



Ear Falls Golf Course



Music Festival



Ear Falls Recreation Centre



Non Profit Housing

2.6 NATURAL ENVIRONMENT

2.6.1 Natural Asset Indicators

The Natural Environment or Natural Assets within a community include the stock of natural resources from which livelihoods are derived. There is potentially a wide range of such resources from intangible public goods (e.g. air quality and biodiversity) to resources that are “used” by people (e.g. water, trees, land and wildlife). Some of the more specific indicators within the category for Natural Assets include:

- Parks and Protected Areas; and,
- Natural Areas/Features of Significance.

These indicators are described in this section, within the context of the Natural Asset well-being of Ear Falls. A photo exhibit of Natural Assets is provided at the end of the section.

2.6.1.1 Parks and Protected Areas

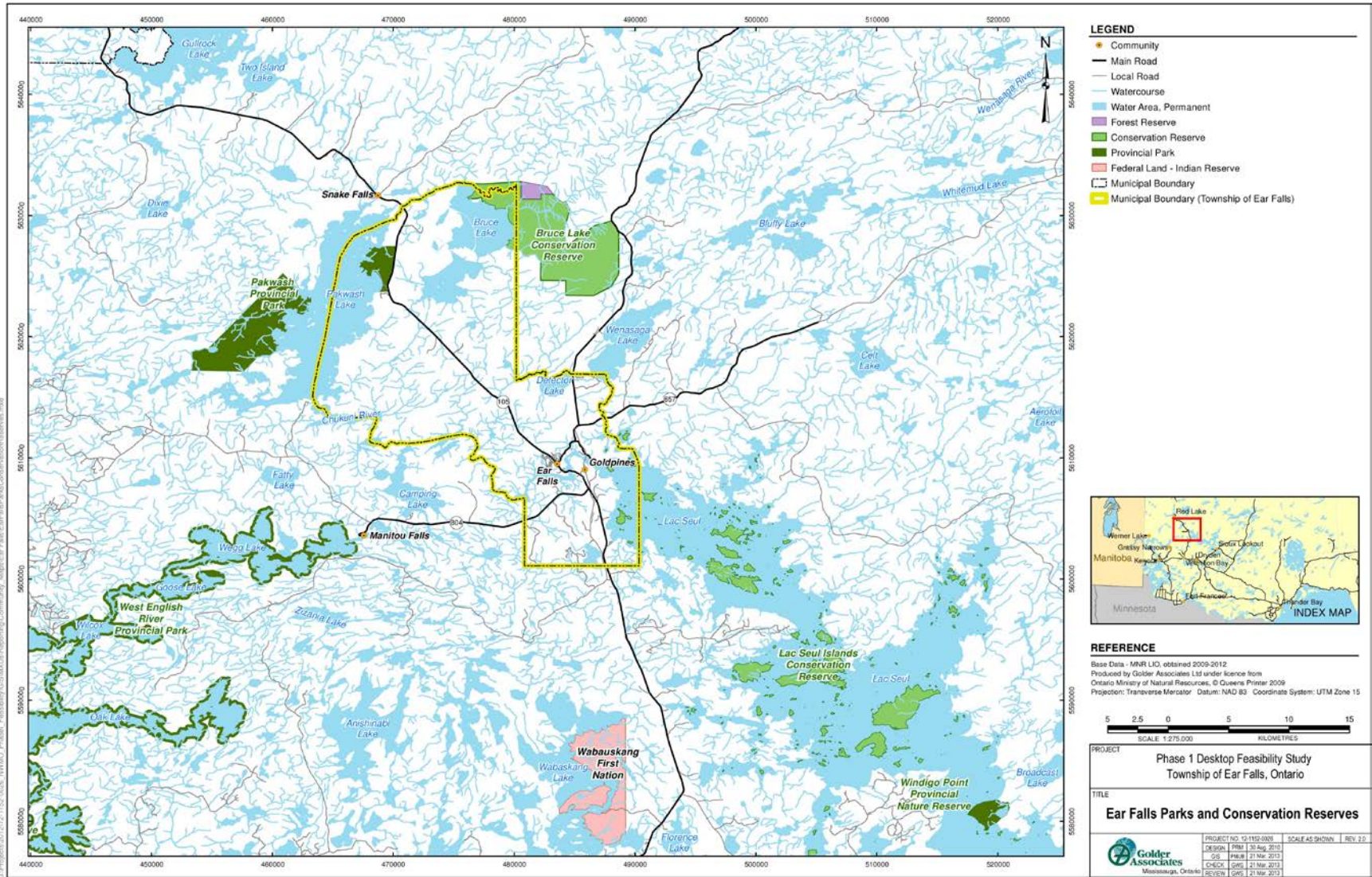
Ear Falls lies in the shores of Lac Seul and the English River, surrounded by pristine wilderness and natural beauty. As discussed in earlier sections of this Community Profile, the natural setting provides economic opportunities for tourism, fishing and hunting. Beyond the active recreational and tourism pursuits, the area also provides opportunities for more passive appreciation of the natural environment, primarily through the two Provincial Parks and two Conservation Reserves in Ear Falls and its periphery. The two reserves include the Bruce Lake Conservation Reserve (approximately 4 km²) and the Lac Seul Conservation Reserve (consisting of approximately 1,731 islands). Table 2.6-1 provides a brief description of the two Provincial Parks. Figure 2.6-1 provides a map of the Parks and Conservation Reserves within Ear Falls and its periphery.

Table 2.6-1 Provincial Parks in the Ear Falls Area

Park	Area in Hectares	Description
Pakwash Provincial Park	3,993	<ul style="list-style-type: none"> • Natural Environment • Wide range of facilities including camping, serviced campsites, restrooms, showers, barrier free access, rentals, boat launch, laundry, playground and day use areas • Activities include hiking, boating, fishing, swimming, canoeing and wildlife viewing
West English River Provincial Park	22,924	<ul style="list-style-type: none"> • Waterway • Filed on September 23rd, 2010, with the Office of the Surveyor General of Ontario in the Ministry of Natural Resources • <i>To-date – no information available regarding facilities or permitted activities</i>

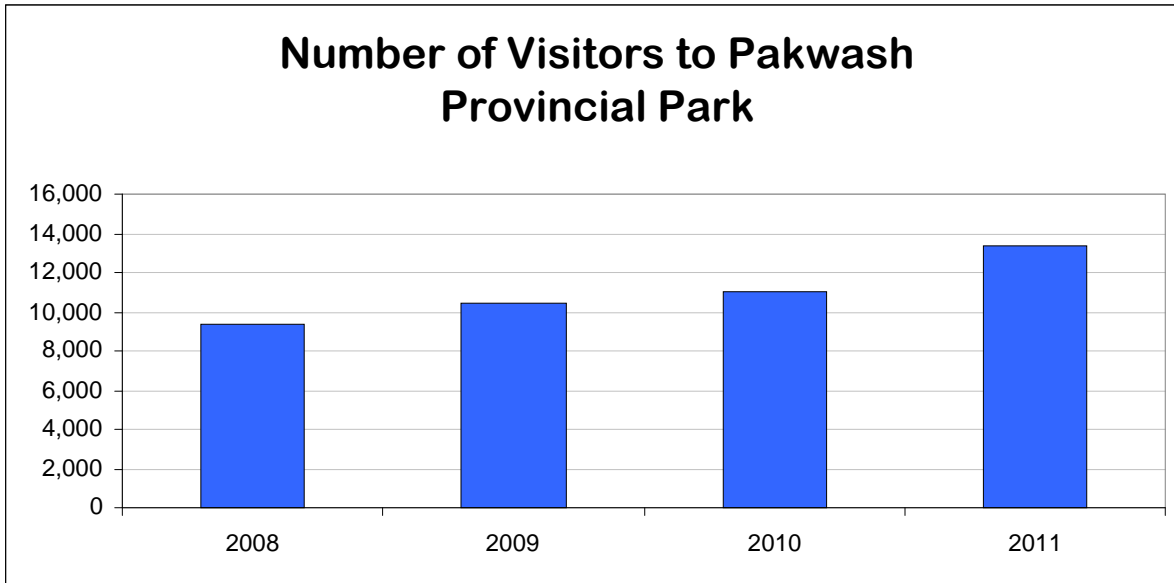
Source: Ontario Parks 2012 (website); Ontario Regulation 316/07 (website) 2012.

Figure 2.6-1 Ear Falls Parks and Conservation Reserves



Pakwash Provincial Park offers visitors regular facilities and attracts visitors and locals in the Ear Falls area; in particular, the 1.5 km stretch of sand beach is a very popular park destination as is the collection of Anishinabek rock paintings found in the park. In 2011, the park received 13,347 visitors with the majority of visitors being overnight campers as opposed to day visitors.³⁵ Figure 2.6-2 summarizes the visitor trends from 2008-2011, according to the number of visitors.

Figure 2.6-2 Number of Visitors to Pakwash Provincial Park (2008-2011)

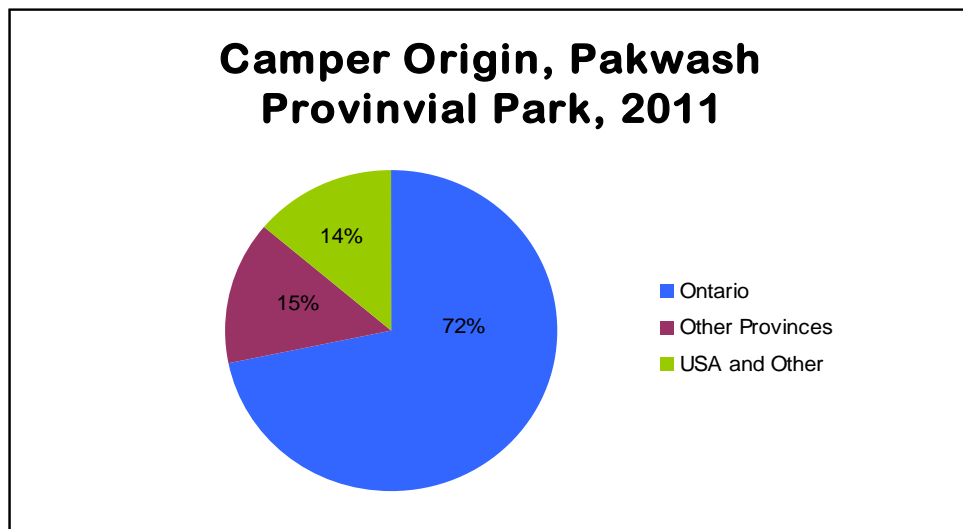


Source: Ontario Parks (2008, 2009, 2010, 2011)

Figure 2.6-2 demonstrates that visitation has increased from 2008 to 2011, indicating that Pakwash Provincial Park continues to be a draw for visitors to the area and highlights the Natural Assets of the region. In 2011, while most of the visitors originated from within the Province, visitors to the park also came from elsewhere in the Province and from international origins. These statistics are presented in Figure 2.6-3.

³⁵ Ontario Parks 2011.

Figure 2.6-3 Camper Origin, Pakwash Provincial Park, 2011



Source: Ontario Parks 2011

West English River Provincial Park is a newly designated Waterway class park and visitor statistics are not available; however, it does offer both passive recreation opportunities and more active wilderness activities.

These Provincial Parks and Conservation Reserves are indications of the abundance of Natural Assets in the Ear Falls area, which are a source of pride and provide economic benefits to residents and local tourist operators.

In addition to Provincial Parks and Conservation Reserves it is worth noting that the Waterfront Park in Ear Falls is also a source of pride for residents. Waterfront Park is located on the English River and offers visitors' restroom facilities, covered picnic areas, playing fields, a beach, swimming, a fully restored freight boat and Visitor Centre. Waterfront Park is the location of many community special events such as the Trout Forest Music Festival held annually in August.

2.6.1.2 Natural Areas/Features of Significance

Ear Falls is located in Sunset Country and its natural beauty has been described as unparalleled. Ear Falls is known as the 'bald eagle capital of North America' with the largest returning nesting population of bald eagles in North America. The high potential for historical sites along the English River and tributaries in the Ear Falls area makes Ear Falls a beautiful and interesting place as do the small (usually less than one hectare in size) archaeological sites concentrated on the shores and islands of Lac Seul along the Chukuni River. Also, with hundreds of kilometres of

shoreline and tall pine forests, Ear Falls is reported to be the best fishing and hunting area in Ontario.³⁶

2.6.2 Summary of Natural Assets

2.6.2.1 Priorities and Key Issues

Ear Falls Natural Assets provide an economic foundation for its resource-based industries including tourism. They are a source of pride and add to the sense of place and quality of life for the community. The community's natural environment has been identified by many of its residents as being important. Ear Falls hopes to manage and promote its Natural Assets to enhance the quality of life for all people in an environmentally responsible way.

2.6.2.2 Community Aspirations

Through its wealth of natural resources which create, passive and active recreational opportunities and engender parks, reserves and trails, Ear Falls hopes to maintain and enhance tourism opportunities. Ear Falls is well suited to further develop its Natural Environment in a way that maintains a balance with environmental protection and the enabling of economic opportunity.

2.6.2.3 Capabilities and Capacities within the Community

Ear Falls has a wide range of established Provincial Parks, trails, Conservation Reserves and other features. There are also a number of businesses and establishments that leverage the preceding to draw visitors to the area. The community has a strong appreciation for the Natural Assets in the region and it fully recognizes that sustainable economic growth requires proactive environmental stewardship.

NATURAL ENVIRONMENT PHOTO EXHIBITS



Waterfront Park



Lac Seul

³⁶ BCG 2010.

2.7 UNIQUE CHARACTERISTICS

2.7.1 Community Character

The community of Ear Falls has a small town feel and in a natural surrounds. Ear Falls is shaped by its history of resource development and in the present day offers excellent recreational opportunities and a high quality of life to its residents.³⁷

Residents describe Ear Falls as being a close-knit, supportive and safe community that appreciates its natural environment. Several residents have expressed passion for the area and the community as a whole.³⁸

The cultural mapping project undertaken for District of Kenora offers the following observation:

“Northwestern Ontarians are fiercely proud of the elements that compose this unique lifestyle: pioneering attitudes, strong community volunteerism, severe winter weather, wildlife viewing from the car on the highway (and in urban areas), friendly neighbourhoods, family oriented communities, high school sports teams, the distance and autonomy from Toronto, and most importantly, their deep connection to the rugged and beautiful wilderness of the boreal forest that is at their doorstep.”³⁹

The character of the community is changing as a result of the location of employment opportunities. For many, Ear Falls is becoming a ‘bedroom’ community with people commuting daily to Red Lake and Dryden for work. Another trend is the increase in the number of families that choose to remain in Ear Falls with one partner out-working on a rotational basis in a remote location. The downsides to this rotational lifestyle from a community perspective are an increase in part-time parenting and a decrease in the volunteer pool.

2.7.2 Environmental Values

The community of Ear Falls is surrounded by Conservations Reserves and Provincial Parks that offer recreational pursuits as well as abundant opportunities to enjoy wildlife.

In appreciation for the Natural Assets in the area, community residents have noted the lack of recycling facilities as a concern and that resource harvesting associated with hunting and fishing needs to be sustainable. Some persons have also noted that more needs to be done to attract tourist dollars into the community.⁴⁰

³⁷ Meridian 2011.

³⁸ Information gathered from NWCC meetings, engagement activities and interviews in the community.

³⁹ Insights Northwest 2011.

⁴⁰ Meridian 2011.

2.7.3 Community Goals

Key goals identified by the community include: planning for a population of 5,000; continuing to seek and develop economic opportunities; and maintaining the safe, supportive, family-oriented life-style for which Ear Falls is known.

2.7.4 Community Action Plan

In 2011, the community of Ear Falls developed a Strategic Plan⁴¹ to guide residents and Council on a path for achieving a more desirable, viable and sustainable community. The outcome of this exercise resulted in the identification of several goals and strategic actions. These are presented in Table 2.7-1, together with associated roles and responsibilities and completion target dates.

The Ear Falls Strategic Plan is also discussed in Section 2.1.3.

Table 2.7-1 Strategic Action, Roles and Responsibility and Completion Target⁴²

Strategic Action	Role and Responsibility	Completion Target
Engage in further studies regarding Nuclear Waste Management.	Council – pass resolution to support further studies and advise NWMO.	February 2012
Continue to improve communication between the staff, Council and the public.	CAO – confirm dates and protocols for Town Hall Meetings and communication/ notices for Meetings.	February 2012
Plan for a Community of 5,000 people.	Council/Consultants – budget for Official Plan Update and prepare Terms of Reference.	March 2012 – July 2013
Develop an Asset Management Plan.	CAO/Consultants – continue process started and include public consultation.	December 2012
Undertake an Operations Review.	CAO – develop a Terms of Reference and retain outside consultant.	March 2013 – October 2013

Source: Meridian 2011.

⁴¹ Meridian 2011.

⁴² Ibid.

3.0 CENSUS DIVISION PROFILE

3.1 OVERVIEW

The definition of the regional context of a community is subjective. The regional boundaries of a community, such as Ear Falls, are defined differently by various entities. For the purposes of this Community Profile, the regional context is left undefined, as further dialogue with community members and members in surrounding communities is required to best understand Ear Falls' regional boundaries.

For statistical purposes, the Township of Ear Falls is situated within the District of Kenora. Therefore, these regional statistics are presented as a means of context setting and comparison.

3.1.1 Expenditures – Where do Residents Purchase Goods and Services?

Residents of a community can either purchase goods and services within their own community or they can obtain goods and services outside of their community. When a resident purchases goods and services outside of their community this is referred to as out-shopping or market leakage. Out-shopping, if prolific can affect retailers in small, rural communities, and as such can pose a threat to the long term economic stability of the community as a whole.

Although a retail study that measures out-shopping is not available for Ear Falls, community interviews suggest that residents traveling to Red Lake for work, medical appointments or school tend to shop while in Red Lake. Additionally, residents travel to Dryden to frequent the big box stores such as Walmart and Canadian Tire on a regular basis.

3.1.2 Location – List of Communities

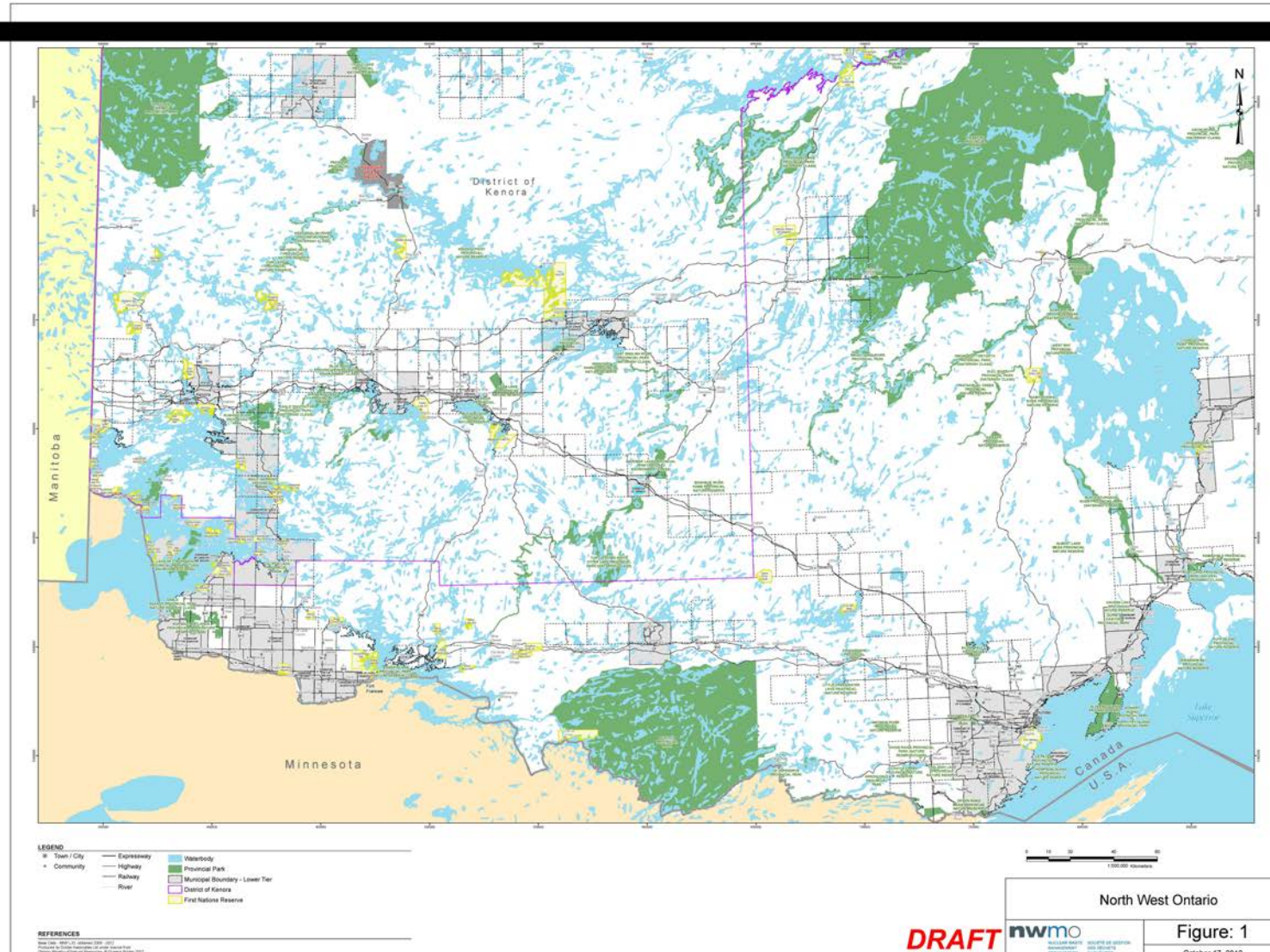
While the regional context of Ear Falls cannot be defined at this point, it is useful to understand the wider geographic area within which Ear Falls is situated. Statistics Canada defines Ear Falls as being situated in the larger census division of Kenora District. This section of the Community Profile provides an overview of Kenora District, so that in the subsequent section (Section 4.0), a comparison of Ear Falls to its larger census division can be made to understand the community within a larger context.

3.1.3 Land Size and Uses

The District of Kenora has a land area of 407,213 km², which covers almost 45% of the land area of the province of Ontario⁴³. Figure 3.1-1 provides an outline of the District.

⁴³ Statistics Canada 2012b.

Figure 3.1-1 District of Kenora, Ontario



3.2 COMMUNITIES

The District of Kenora, includes the non-Aboriginal communities of: Dryden, Ignace, Machin, Kenora City, Pickle Lake, Red Lake, Sioux Lookout, and Sioux Narrows.⁴⁴ Statistics Canada data are used as the primary data source for each of these communities; however, in instances where other regional definitions are useful, or may add to the discussion to provide a more complete picture of Ear Falls, these data are also presented and included in the discussion.

3.2.1 Community Names and Locations

The District of Kenora is located in northwestern Ontario, and comprises a large portion of Ontario. Figure 3.1-1 provides a map of the district and also highlights the nine non-Aboriginal communities within it.

The following is an introduction to each of the other communities, with respect to their location within the District of Kenora.

Dryden

The City of Dryden is located on the TransCanada Highway (Highway 17) midway between Winnipeg and Thunder Bay. Dryden has a large retail and service sector. It is known for its culture and outdoor adventures and boasts one of the most dynamic economies in northern Ontario.⁴⁵ The distance from Dryden to Ear Falls is 146 km.

Ignace

The Township of Ignace is located in the District of Kenora, in northwestern Ontario. It is a small community, located on the TransCanada highway, approximately 250 km west of Thunder Bay and 450 km east of Winnipeg. Ignace is situated in the heart of Ontario's "sunset country" and is the starting point of Ontario's most northerly highway, Highway 599. The distance from Ignace to Ear Falls is 251 km.

Kenora

The City of Kenora is a two hour drive east of Winnipeg on the TransCanada highway and a three hour drive north of the Canada-U.S. border via Highway 71. The city is prominent in the industries of tourism, lumber, mining, milling and commercial fishing.⁴⁶ The distance to Ear Falls is 198 km.

⁴⁴ Note that the District of Kenora also includes a number of Indian Reserves, which are not included in this regional profile.

⁴⁵ KDSB 2012.

⁴⁶ Ibid.

Machin

The Municipality of Machin is made up of three communities, all located on Eagle Lake: Eagle River, Minnitaki and Vermillion Bay. Tourism, forestry and mining are the main industries in this municipality. Vermillion Bay is located 306 km east of Winnipeg on the TransCanada highway and 45 km west of Dryden.⁴⁷ The distance to Ear Falls is 98 km.

Pickle Lake

The Township of Pickle Lake is located at the end of Highway 599, 750 km from Winnipeg and 540 km from Thunder Bay. The Township of Pickle Lake was originally founded as a gold mining community, but has evolved into a distribution centre for goods and services to the many First Nation communities to the North.⁴⁸ The distance from Pickle Lake to Ear Falls is 502 km.

Red Lake

The Municipality of Red Lake, home to the Woodland Caribou Provincial Park (one of the best-kept ecotourism sites in the world), is located on the north end of Highway 105, and is the most northwesterly municipality in Ontario⁴⁹. Red Lake has Canada's largest gold mine, and it is also one of the world's richest gold mines. The distance to Ear Falls is 70 km. Red Lake has close ties to the community of Ear Falls, both economically and socially.

Sioux Lookout

The municipality of Sioux Lookout is half-way between Thunder Bay and Winnipeg, north of the TransCanada highway. It is nestled on the lakeshores of Pelican, Abram and Lac Seul. Sioux Lookout is renowned as a year-round tourist destination and boasts a culturally diverse population of over 5,300.⁵⁰ The distance to Ear Falls is 242 km.

Sioux Narrows/ Nestor Falls

The Township of Sioux Narrows/Nestor Falls is situated on Highway 71 North, midway between the border town of Fort Frances and Kenora City. Sioux Narrows/Nestor Falls is located on the eastern shores of Lake of the Woods which is one of the world's largest inland, freshwater lakes with over 14,000 islands and 104,607 km of shoreline.⁵¹ The distance to Ear Falls is 232 km.

Beyond the District of Kenora, lie the Census Metropolitan Areas (CMAs) of Winnipeg, MB (approximately 410 km from Ear Falls) and Thunder Bay (approximately 490 km from Ear Falls). These urban areas exert influence on multiple communities including Ear Falls. The 2011 population of Winnipeg and Thunder Bay (CMAs) are in the order of 763,000 and 108,000

⁴⁷ KDSB 2012.

⁴⁸ Ibid.

⁴⁹ Ibid.

⁵⁰ Ibid.

⁵¹ Ibid.

respectively. Both these CMAs are central places for commercial businesses and services, health care, higher education and transportation (including, road, rail, marine and air).

3.2.2 Non-Aboriginal Historical Context

The 17th century saw European exploration and for the next two centuries the history of northwestern Ontario was marked by fur trade and missionaries. By the 1860's, the fur trade gave way to mining and logging as the major economic activities. Shortly thereafter, in 1877, gold was discovered in northwestern Ontario. Exploration for gold, silver, other precious metals and iron continued over the next 30 years. This opened the northwestern region to settlement and development.⁵²

One of the major developments during the 1870's was the construction of the Canadian Pacific Railway (CPR). The CPR required millions of ties and bridge timbers to span miles of bedrock and swamp. The railway opened the northwestern region to the development of timber, fish and mineral resources.⁵³

Throughout the First World War and into the 1920's, mining and pulpwood remained the region's engines for growth; however, the Great Depression (1930's) hit the milling industry hard, and employment and mill production plummeted to only a fraction of what it was in previous decades.⁵⁴

With the ban of export of raw sawlogs in 1987 (Ontario's legislature amended the *Crown Timber Act*), and then two years later a similar ban for pulpwood, there was high demand for local processing, and as such, the sawmilling industry within northwestern Ontario expanded exponentially. The same era also heralded the start of the northwest pulp and paper industry, propelling the rapid development of northwestern communities.⁵⁵

The construction of Highway 105 facilitated the introduction of tourism to the area. During the final construction stages of the TransCanada pipeline, new resource development projects started to emerge across the region. This was particularly true for mining and forestry activities, which then became the primary industries that fueled subsequent growth in the northwestern region.⁵⁶

⁵² Runesson 2011.

⁵³ Runesson 2011; Township of Ear Falls n.d.

⁵⁴ Ibid.

⁵⁵ Runesson 2011.

⁵⁶ Lederer 2009; Runesson 2011.

3.3 ABORIGINAL COMMUNITIES AND ORGANIZATIONS

The information in this section reflects readily available information from publicly available sources and does not reflect conversations or dialogue with Aboriginal communities or organizations unless otherwise noted.

The Aboriginal communities included here are those which have been provided information by the NWMO information and in some cases meetings have been held to provide additional information.

- First Nations: (The following First Nations are all part of the Grand Council Treaty 3) - Asubpeeschoseewagong Netum Anishinabek (Grassy Narrows First Nation), Eagle Lake First Nation, Wabaseemoong Independent Nations (Whitedog), Waubuskang First Nation, and Lac Seul First Nation (also recognized with Nishnawbe Aski Nation).
- Métis: The Métis Nation Ontario Region 1 including Kenora Métis Council, Northwest Métis Nation of Ontario Council, Sunset Country Métis Council, and Atikokan and Surrounding Area Métis Council.

The text which follows provides a brief introduction to these communities and organizations.

3.3.1 First Nations

3.3.1.1 Asubpeeschoseewagong Netum Anishinabek (Grassy Narrows First Nation)

Asubpeeschoseewagong First Nation (also known as Grassy Narrows First Nation) is an Ojibwa First Nation located 80 km north of Kenora. The total registered population as of May 2012 is 1456, of which 908 live on-reserve, 503 are off-reserve and 44 live on other reserves.

3.3.1.2 Eagle Lake (Migisi Sahgaigan)

Eagle Lake First Nation is located on the shores of Eagle Lake west of the Wabigoon Lake Ojibway Nation. The proximity of the communities is due to their shared ancestry. Eagle Lake members once belonged to the same community as the Wabigoon Lake Ojibway Nation. The community has an on-reserve population base of 232 according to the 2011 census. The community website states that the total population in 2010 was 574 with the inclusion of off-reserve members.⁵⁷

⁵⁷ Eagle Lake First Nation. "Community Profile." Accessed: November 30, 2012.
<http://www.eaglelakefirstnation.ca/>

3.3.1.3 Wabaseemoong Independent Nation

The Wabaseemoong Independent Nation is an Ojibway First Nation that includes the communities of One Man Lake, Swan Lake and Whitedog. The First Nation communities are located north of Kenora east of the Manitoba border. The total registered population as of May 2012 is 1,852, of which 910 live on-reserve, while 933 are off-reserve and 9 live on other reserves.

3.3.1.4 Wabauskang First Nation

Wabauskang First Nation was formerly known as Quibelland is located on the English Wabigoon River. The total registered population as of May 2012 is 292, of which 124 live on-reserve, 164 are off-reserve and 4 live on other reserves.

3.3.1.5 Lac Seul First Nation

Lac Seul (Obishikokaang) is a signatory of Treaty #3. The reserve is bounded to the north and east by Lac Seul Lake. The reserve is made up of three communities, Kejick Bay, Whitefish Bay, and Frenchman's Head. The total registered population as of May 2012 is 3,154, of which 811 are on-reserve, 2291 are off-reserve and 27 are on other reserves. Band membership varies from 499⁵⁸ to 564.⁵⁹

3.3.1.6 Grand Council of Treaty #3

The communities identified above are members of the Grand Council of Treaty #3. The organization serves the communities in northwestern Ontario that were signatories of Treaty #3 in 1873. The Grand Council of Treaty #3 represents 27 First Nation communities across Treaty #3 areas of northern Ontario and southeastern Manitoba and an additional four First Nations in specific regards to their Treaty rights. The organization's technical and administrative staff assist the member communities and citizens by supporting policy analysis, strategic planning, policy design, governance revitalization, law making, historical research, issue identification, program development and the co-ordination of technical and political working groups.”⁶⁰

⁵⁸ http://www.aboriginalcanada.gc.ca/abdt/apps/connectivitysurvey.nsf/vAllCProfile_en/452.html

⁵⁹ INAC.

⁶⁰ Grand Council of Treaty #3. “Mandate.” <http://www.gct3.net/grand-chiefs-office/gct3-info-and-history/mandate/>

3.3.2 Métis

Métis citizens are represented at the local level through the Métis Nation of Ontario (MNO) Charter Community Councils. The local Councils are a communication hub for MNO and play a role in fostering community empowerment and development for Métis citizens living within the geographic region of that council. Community Councils operate in accordance with MNO Charter Agreements, which give councils the mandate to govern, while ensuring accountability, transparency, and consistency.

Protocol Agreements are set up between the MNO and each of its regions. The MNO Lands, Resources and Consultation Committee is the initial contact in each Region and is the group with which discussion and involvement begins. Through this Committee involvement of local Councils occurs.

Ear Falls is within Region 1 of the MNO classification. There are four Métis councils within Region 1, namely:

- Kenora Métis Council;
- Northwest Métis Nation of Ontario Council;
- Sunset Country Métis Council; and,
- Atikokan and Surrounding Area Métis Council.

3.4 POPULATION DYNAMICS (BY COMMUNITY)

3.4.1 Trend Over Time

Table 3.4-1 presents the population trend of the non-Aboriginal communities within the District of Kenora over the past decade. As shown in Table 3.4-1, from 2001 to 2006, four of the nine communities showed a decrease in population, while three showed an increase in population; two communities had populations that stayed neutral, neither decreasing nor increasing. However, by 2011, seven of the nine communities showed a decrease in population, with the exceptions being Sioux Narrows, and to a lesser degree the City of Kenora, which saw an increase of 7.1% and 1.1% and respectively. Overall, the District of Kenora experienced an increase in population from 2001 to 2006 and a decrease from 2006 to 2011.

Table 3.4-1 Population Trend (2001-2011) – Non-Aboriginal Communities in the District of Kenora

Community	2001	2006	% change (2001-2006)	2011	% Change (2006-2011)
<i>District of Kenora</i>	61,802	64,419	4.2	57,607	-10.6
Dryden	8,198	8,195	0.0	7,617	-7.1
Ear Falls	1,150	1,153	0.3	1,026	-11
Ignace	1,709	1,431	-16.3	1,202	-16
Kenora City	15,838	15,177	-4.2	15,348	1.1
Machin	1,143	978	-14.4	935	-4.4
Pickle Lake	399	479	20.1	425	-11.3
Red Lake	4,233	4,526	6.9	4,366	-3.5
Sioux Lookout	5,336	5,183	-2.9	5,037	-2.8
Sioux Narrows	577	672	16.5	720	7.1

Source: Statistics Canada (2007, 2012a)

The wider region as a whole has experienced similar economic conditions and population trends as Ear Falls.

3.4.2 Age Profile

Table 3.4-2 provides the gender and age profile of non-Aboriginal communities in the District of Kenora.

Table 3.4-2 Gender and Age Profile (2011) – Non-Aboriginal Communities in the District of Kenora

Community	Male	Female	% Population Over 15 yrs	Median Age
<i>District of Kenora</i>	28,930	28,680	79.5	38.6
Dryden	3,660	3,965	84.2	45
Ear Falls	505	520	78.8	39.2
Ignace	600	600	84.7	48.1
Kenora City	7,545	7,805	84.3	44.4
Machin	475	460	84.7	47
Pickle Lake	225	200	76.5	28.5
Red Lake	2,235	2,130	82.1	38.1
Sioux Lookout	2,460	2,580	79.9	36.1
Sioux Narrows	365	355	88.6	52.7

Source: Statistics Canada 2012a

Generally speaking, northern Ontario has been faced with a declining population, as well as an aging population. The Northwest Training and Adjustment Board (NTAB)⁶¹ suggest that this aging workforce has a downside as it may herald the imminent contraction of the workforce as people leave it to retire. On a more positive note, older workers leaving the workforce opens up opportunities for younger workers; if the older workers can be engaged in knowledge transfer before leaving this would give a jump start to new entrants.

NTAB notes that young people are leaving the area largely due to the perception that there are few job opportunities. However, they suggest that there is clear evidence of employment opportunities, particularly in skilled trades, where knowledge and skills are transferable between sectors. Highlighting the importance of succession planning to employers as well as programs like apprenticeship and cooperative education were viewed as critically important strategies to address youth out-migration. Equally important is the need to market local employment opportunities to both those currently living in the region as well as those who have left.⁶²

3.5 LABOUR FORCE (REGIONAL AS A WHOLE)

Labour force activity in the District of Kenora is presented in Table 3.5-1 and Table 3.5-2 including a comparison of the participation, employment and unemployment rates between 2001 and 2006. These numbers indicate that participation and employment rates have increased from 58.6% to 64.1% and 45.3% to 58.5%, respectively, over the 2001 to 2006 time period. Additionally, within this time period, unemployment rates dropped by more than half, from 22.7% to 8.8%.

Note: The most recent census data (2011) are not published at this time.

Table 3.5-1 Labour Force Activity (2006) – Non-Aboriginal Communities in the District of Kenora

Labour Force Activity	2006
Total population 15 yrs and over	48,865
In labour force	31,340
Employed	28,595
Unemployed	2,745

Source: Statistics Canada 2007

⁶¹ Northwest Training and Adjustment Board (NTAB) 2011a.

⁶² Ibid.

Table 3.5-2 Labour Force Activity (2001-2006) – Non-Aboriginal Communities in the District of Kenora

Labour Force Activity	2001	2006
Participation rate %	58.6	64.1
Employment rate %	45.3	58.5
Unemployment rate %	22.7	8.8

Source: Statistics Canada (2002, 2007)

More recent data for the District of Kenora are available from the Financial Post Markets Canadian Demographics 2012 data set. These Labour Force Estimates are summarized in Table 3.5-3.

Table 3.5-3 Labour Force Estimates (2012) – District of Kenora

Labour Force Activity	2012
Male In the Labour Force	17,326
Female In the Labour Force	16,135
Male Participation Rate	65.8
Female Participation Rate	60.9
Male Unemployment Rate	13.5
Female Unemployment Rate	9.4

Source: FPmarket data 2012

While these estimates are not directly comparable to Statistics Canada (2006) data, they do indicate that in the region, unemployment rates have increased from 2006 to 2012 and that participation rates have likely decreased for the same time period.

Based on the NTAB’s 2011 Trends Opportunities Priorities Report,⁶³ “In 2001, 49% of the Aboriginal population was under the age of 25 suggesting Aboriginal people now make up a large part of the workforce” in the District of Kenora.

3.5.1 Population by Education/Training Attainment

Table 3.5-4 provides the education attainment of those 15 years and over in the District of Kenora for 2006.

⁶³ NTAB 2011a.

Table 3.5-4 Population by Education/Training Attainment (2006) – Non-Aboriginal Communities in the District of Kenora

Education/Training Attainment (15 yrs and Over)	2006	%
Total population 15 years and over	48,860	
No certificate, diploma, degree	18,875	38.6
High school certificate or equivalent	11,665	23.9
Apprenticeship or trades certificate or diploma	5,040	10.3
College, CEGEP or other non-university certificate or diploma	7,765	15.9
University certificate or diploma below the bachelor level	1,320	2.7
University certificate, diploma or degree	4,195	8.6

Source: Statistics Canada 2007

Note: The most recent census data (2011) are not published at this time.

According to NTAB⁶⁴ “Retention of young people from small urban and rural communities within post-secondary education programs appears to present a challenge”. This statement is echoed in other publications as well as by individuals residing in the northwestern communities. It is also a similar issue expressed in Ear Falls.

A study by the University of Ottawa tracked 10,000 students between 2006 and 2009, and found that students from rural or small urban areas of between 10,000 and 100,000 are more likely to leave post-secondary education before completion. They also found that more than 28% from small urban areas and 21% of rural students would leave college before completion, while 12% and 8% of students from small urban areas and rural areas would leave university before completion, respectively. These numbers are almost double the 15.8% of students from cities who leave college before completion and 4% of students from cities who leave university before completion. One of the main reasons for this behaviour is attributed to dislocation from family and friend support encountered by those who leave rural and small urban areas for schooling.⁶⁵

3.5.2 Employment by Activity/and Sector

Many communities in rural Canada are economically dependent on various forms of natural resource extraction. According to Natural Resources Canada, it is estimated that more than 300 First Nation and non-First Nation communities are depended on the forestry industry, up to as much as 50% of their economic function.⁶⁶

⁶⁴ NTAB 2011a.

⁶⁵ Ibid.

⁶⁶ Wozniczka, Koster & Lemelin 2010.

The number of persons employed by sector for 2001 and 2006 are provided in Table 3.5-5. The District of Kenora has seen an increase in the number of people employed in: agriculture and other resource-based industries; wholesale and retail trade; finance and real estate; and to a lesser extent in business services. The manufacturing and construction industries have seen a decrease of approximately 17% in the number of employees within the sector.

The number of individuals working in the health and education sector has also increased; however, due to categorization difference in the Statistics Canada data between 2001 and 2006 (the latter also including social services) it is difficult to predict the increase in the number of people employed in the health and education sector only.

Table 3.5-5 Employment by Activity and Sector (2001-2006) – Non-Aboriginal Communities in the District of Kenora

	2001	2006
Total experienced labour force (15 years and over)	29,635	30,660
Agriculture and other resource-based industries	2,610	2,720
Manufacturing and construction industries	4,840	4,020
Wholesale and retail trade	4,030	4,435
Finance and real estate	830	930
Health and education	5,875	7,095*
Business services	3,430	3,480
Other services	8,035	7,990

* includes health care, social services and educational services

Source: Statistics Canada (2002, 2007)

Note: The most recent census data (2011) are not published at this time.

3.6 BUSINESS ACTIVITY

3.6.1 Main Businesses – Past and Current

In the past, the region's growth has been driven by resource-dependant industries dominated by extraction companies head quartered outside the region.⁶⁷

Forestry

As of June 2010 there were 118 businesses in the District of Kenora operating in the forestry and logging industry. Approximately 85% of these businesses employ less than five people with 70 (59%) being single-person enterprises. There are two businesses which employ between 100 and 199 individuals. It is estimated that there are 465 people working in forestry and logging businesses in the District of Kenora that employ less than 100 people in addition to the two businesses that employ between 100 and 199 people. There are 15 additional businesses in the District of Kenora that support forestry and agriculture employing an estimated 98 people.⁶⁸

Paper and wood products manufacturing is also important to the economy in the District of Kenora. There is one paper manufacturer that employs more than 500 people and 9 wood product manufacturing businesses with the employee size between 1 and 200. The estimated employment in wood products manufacturing in the District of Kenora is 119 people in companies employing less than 100 in addition to two enterprises that employ between 100 and 199.⁶⁹

The forestry industry has been in decline over the last decade, due to a combination of circumstances including a decreased demand for paper, the global recession, the downturn in the United States housing market and increased competition from lower-cost producers in the international market. Noteworthy; is that late 2009 and early 2010 showed signs of improvement with some mills reopening and more jobs created than lost.⁷⁰

Mining

As of June 2010, in the District of Kenora, there are four businesses directly related to mining with two employing between 200 and 499 people. The remaining two smaller operations employ between 5 and 9. There are seven smaller businesses engaged in activities supporting the mining industry which employ an estimated 40 people. There are six businesses engaged in the manufacturing of non-metallic mineral products, employing approximately 100 people.⁷¹

⁶⁷ NTAB 2011b; Schmallegger & Carson 2010.

⁶⁸ NTAB 2011a.

⁶⁹ Ibid.

⁷⁰ Ibid.

⁷¹ Ibid.

Agriculture

There are ten businesses operating in the crop production sector with 80% owner-operated in the District of Kenora. There are 12 additional enterprises focused on animal production with 9 or 75% owner-operated. Agricultural activity is concentrated in the south with crops including barley, wheat, oats, corn, soybeans, potatoes, alfalfa and other hay crops. There are also some vegetable and fruit crops. Animal production in the region includes beef, dairy, sheep, goats, pigs, bison, deer/elk, llama/alpaca and an increasing number of horses.⁷²

The agricultural sector supports about 100 on-farm jobs, which is down approximately 50% from the total in 2001. The proportion of off-farm employment in the District of Kenora increased from 45% to 58% between 1995 and 2005. It is noted that the proportion of farmers working off the farm may result in an under-reporting of labour activity within the agricultural sector.⁷³

Tourism

There are 548 businesses operating in the tourism sector in the District of Kenora. Of these, 368 (67%) are accommodation services and 109 (20%) are classified as food and beverage services. This industry is a key employer within the region; with an estimated 4,052 people working in businesses that employ less than 100 people and an additional two food services businesses between 100 and 199 people.⁷⁴

Health Care

The health care industry in the northwest region (which comprises the District of Kenora and the District of Rainy River) accounted for 11% of the total employment, compared to 8% across Ontario in 2006. 82% of health care workers are female in this region. Ambulatory care subsectors offer the most employment opportunities. 77% of the workers in this subsector are considered prime working age; between 25-54 years of age, 52% have attained either a college diploma or university degree, while the median income is \$41,798. From 2005 to 2010, employment has grown 10% and is the largest employer in the Northwest economic region.⁷⁵

3.6.2 Number of Employees

Small and medium-sized businesses play an important role in the economy of the District of Kenora. As such, with the exception of Manufacturing and Education, Health Care and Social Assistance, 99% of all businesses employ less than 100 people⁷⁶.

⁷² NTAB 2011a.

⁷³ Ibid.

⁷⁴ Ibid.

⁷⁵ NTAB 2011b.

⁷⁶ NTAB 2011a.

NTAB provides estimated employment numbers for various industries in 2010 within the District of Kenora (Table 3.6-1). These numbers are provided below⁷⁷.

Table 3.6-1 Number of Employees by Industry in the District of Kenora

Industries	Estimated Employment Numbers
Agriculture and Forestry Industries	619
Mining and Heavy Construction	1,657
Manufacturing	522
Retail/Wholesale Trade and Transportation	5,294
Finance, Insurance, Real Estate (F.I.R.E.), Professional and Scientific	2,644
Education, Health Care and Social Assistance	2,237
Tourism, Arts, Culture and Recreation	4,052
Personal Services	1,154
Government Services	1,549

Source: NTAB 2011a

3.6.3 Investment Trends and Projections

The *Places to Grow Plan for Northern Ontario* was developed under *The Places to Grow Act*, 2005, to provide a strategic framework to growth and investment in northern Ontario. The Plan identifies a number of objectives and policies around key themes: the economy, people, communities, infrastructure, environment and Aboriginal peoples.⁷⁸ The Plan is a strategic framework to help guide decision making over the next 25 years. Places to Grow outlines a Vision for northern Ontario as follows:

*Northern Ontario has a skilled, educated, healthy and prosperous population that is supported by world-class resources, leading edge technology and modern infrastructure. Companies scan the world for opportunities to create jobs, attract investment and serve global markets. Communities are connected to each other and the world, offering dynamic and welcoming environments that are attractive to newcomers. Municipalities, Aboriginal communities, governments and industry work together to achieve shared economic, environmental and community goal.*⁷⁹

⁷⁷ NTAB 2011a.

⁷⁸ Ministry of Infrastructure/Ministry of Northern Development, Mines and Forestry, 2011.

⁷⁹ Ibid.

The Plan identifies a number of growth priorities for the economy in northern Ontario including, but not limited to:

- Advanced Manufacturing;
- Agriculture, Aquaculture and Food Processing;
- Arts, Culture and Creative Industries;
- Digital Economy;
- Forestry and Value-Add Forestry-Related Industries;
- Health Sciences;
- Minerals Sector and Mining Supply and Services;
- Renewable Energy and Services;
- Tourism;
- Transportation, Aviation and Aerospace; and,
- Water Technologies and Services.⁸⁰

This Plan “is a fundamental guiding document for economic development activities in the District of Kenora. Connecting plans and projects to policies within the Plan is vital if funding from the government of Ontario is required for project implementation”.⁸¹

Northern Ontario aims to invest in opportunities to grow strategically over the next 25 years to attract economic growth and provide employment opportunities and infrastructure development to help retain youth and build its urban, rural, remote and Aboriginal communities.

3.7 REGIONAL PROFILE SUMMARY

The District of Kenora, much like most areas in northern Ontario, is experiencing a population decline as people out-migrate, generally to realize other economic opportunities elsewhere. To attract more growth and retain its youth and young families, northern Ontario, including the District of Kenora is attempting to transition its economy from heavy dependence on resource extraction to a more diversified portfolio incorporating resource extraction as well as tourism, energy developments and other technology projects.

⁸⁰ Ministry of Infrastructure/Ministry of Northern Development, Mines and Forestry, 2011.

⁸¹ Insights Northwest 2011.

4.0 COMPARISON OF THE COMMUNITY PATTERNS WITH THE REGION AND PROVINCE

4.1 POPULATION DYNAMICS

4.1.1 Trend Over Time

Over the past 15 years, the populations of Ear Falls and the District of Kenora as a whole have seen a decline, while the Province of Ontario has experienced population growth. Population growth in the Province has been steady, as presented in Table 4.1-1. Correspondingly, both Ear Falls and the District of Kenora witnessed a decrease in population from 1996-2001, a recovery from 2001 to 2006 (growth of 0.3% and 4.2% respectively), and then a steeper decline of 11% and 10.6% between 2006 and 2011.

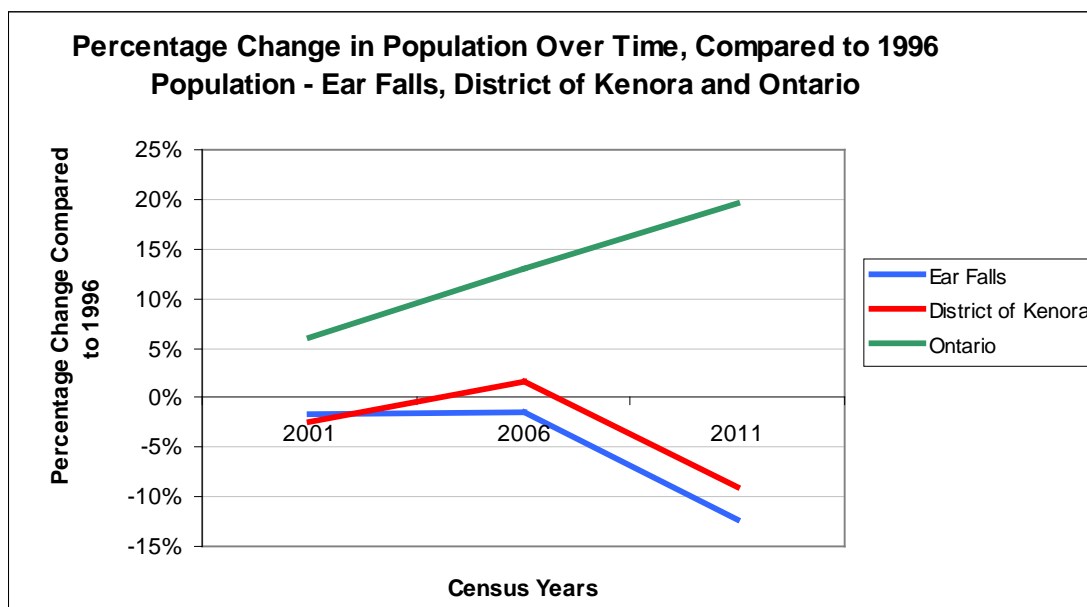
Table 4.1-1 Population Trend (1996-2011) – Ear Falls, District of Kenora and the Province of Ontario

	1996	2001	% change (1996-2001)	2006	% change (2001-2006)	2011	% change (2006-2011)
Ear Falls	1,170	1,150	-1.7	1,153	0.3	1,026	-11.0
District of Kenora	63,360	61,802	-2.5	64,419	4.2	57,607	-10.6
Ontario	10,753,573	11,410,046	6.1	12,160,282	6.6	12,851,821	5.7

Source: Statistics Canada (1997, 2002, 2007, 2012a)

When compared to 1996 population levels (see Figure 4.1-1), it is clear that the Province of Ontario has experienced strong growth from 1996 to 2011 (20% growth), while the District of Kenora has experienced a decline for the same period (-9%) and Ear Falls has been marked with an even steeper decline in population (-12%).

Figure 4.1-1 Percentage Change in Population Over Time, Compared to 1996 Population, Ear Falls, District of Kenora and Province of Ontario



Source: Statistics Canada (1997, 2002, 2007, 2012a)

4.1.2 Age Profile

As presented in Table 4.1-2, the median age in Ear Falls is lower than the Province, but higher than the District of Kenora; while Ear Falls stands lower than the District of Kenora and Ontario with respect to the percentage of the population 15 years and over.

Table 4.1-2 Gender and Age Profile (2011) – Ear Falls, District of Kenora and Province of Ontario

Community	Total Population By Age Group	Male	Female	Median Age	Population 15 years and older
Ear Falls	1,025	505	520	39.2	78.8%
District of Kenora	57,605	28,930	28,680	38.6	79.5%
Ontario	12,851,820	6,263,140	6,588,685	40.4	83.0%

Source: Statistics Canada 2012a

Overall, the comparison of the age profile of Ear Falls with the District of Kenora and the Province of Ontario depicts a similar population distribution pattern (Table 4.1-2 and Figure 4.1-2, Figure 4.1-3 and Figure 4.1-4); however, noteworthy is the 15-24 year age cohort in Ear Falls, which is relatively lower compared to the same age cohort in the District of Kenora and Ontario.

Figure 4.1-2 Age Profile (2011) – Ear Falls

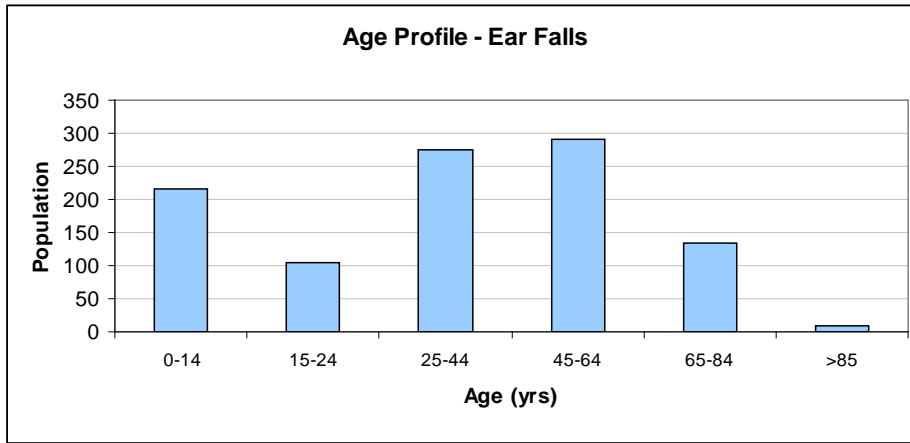


Figure 4.1-3 Age Profile (2011) – District of Kenora

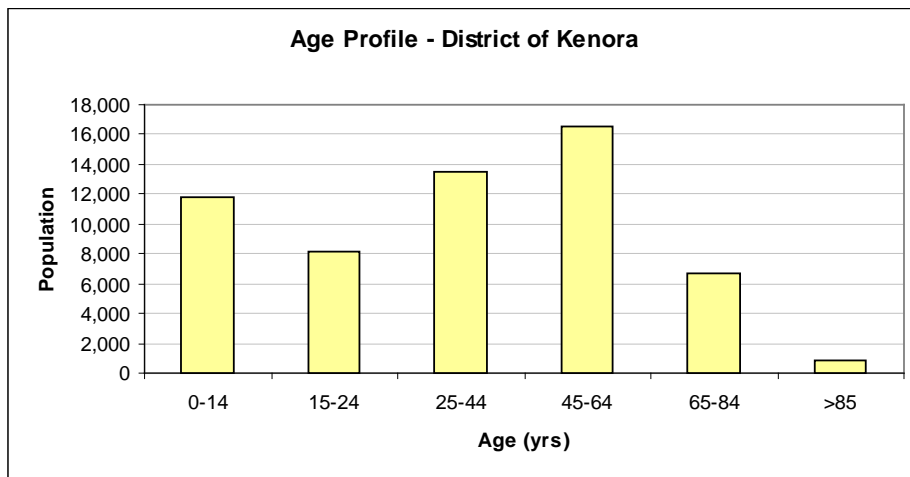
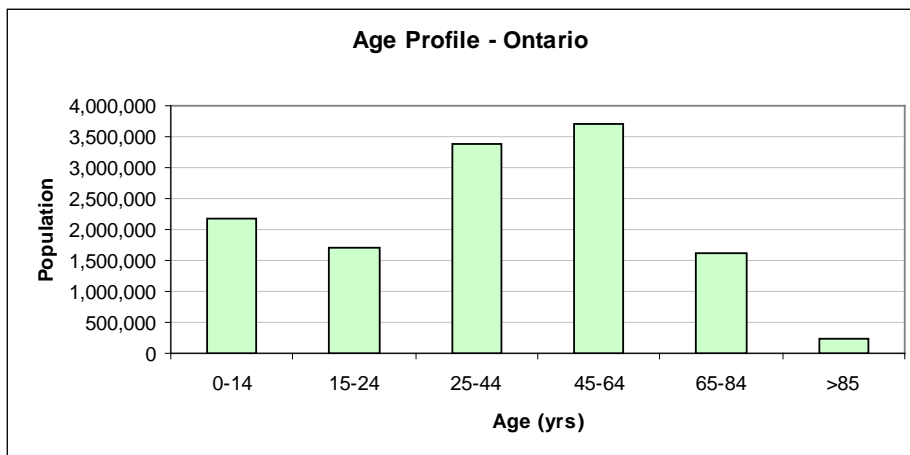


Figure 4.1-4 Age Profile (2011) – Province of Ontario



4.2 LABOUR FORCE

Census Canada data for 2006 indicate that Ear Falls had the lowest unemployment rate (2.8%) in comparison to the District of Kenora (8.8%) and Ontario (6.4%), while the District of Kenora has the lowest participation rate and employment rate.

In addition to participation, employment and unemployment rates, Table 4.2-1 also presents the total number of people in the labour force, the number of those employed and unemployed for Ear Falls, the District of Kenora and Ontario.

Table 4.2-1 Labour Force (2006) – Ear Falls, District of Kenora and Province of Ontario

Labour Force Activity	Ear Falls	District of Kenora	Ontario
Total population 15 yrs and over	945	48,865	9,819,420
In labour force	715	31340	6,587,580
Employed	690	28595	6,164,245
Unemployed	20	2745	423,335
Participation rate %	75.7	64.1	67.1
Employment rate %	73.0	58.5	62.8
Unemployment rate %	2.8	8.8	6.4

Source: Statistics Canada 2007

Note: The most recent census data (2011) are not published at this time.

4.2.1 Population by Education/Training Attainment

As presented in Table 4.2-2, in 2006, the percentage of people with no certificate, diploma, degree in Ear Falls (21.7%) is similar to that in Ontario (22.2%); however, it is much lower than the District of Kenora (38.6%).

Noteworthy is the proportion of people holding a high school certificate or equivalent; apprenticeship or trades certificate or diploma; college, CEGEP or other non-university certificate or diploma, which is higher in Ear Falls than the District and the Province.

Table 4.2-2 Population by Education/Training Attainment (2006) – Ear Falls, District of Kenora and Province of Ontario

Education/Training Attainment (15 years and over)	Ear Falls	%	District of Kenora	%	Ontario	%
Total population 15 yrs and over	945	-	48,865	-	9,819,420	-
No certificate, diploma, degree	205	21.7	18,875	38.6	2,183,625	22.2
High school certificate or equivalent	310	32.8	11,665	23.9	2,628,575	26.8
Apprenticeship or trades certificate or diploma	140	14.8	5,040	10.3	785,115	8.0
College, CEGEP or other non-university certificate or diploma	210	22.2	7,765	15.9	1,804,775	18.4
University certificate or diploma below the bachelor level	35	3.7	1,320	2.7	405,270	4.1
University certificate, diploma or degree	45	4.8	4,195	8.6	2,012,060	20.5

Source: Statistics Canada 2007

Note: The most recent census data (2011) are not published at this time.

4.2.2 Employment by Activity and Sector

According to the census data for 2006 (Table 4.2-3), Ear Falls has a much larger percentage of people working in agriculture and other resource-based industries compared to the District of Kenora and Ontario.

Table 4.2-3 Employment by Activity and Sector (2006) – District of Kenora and Province of Ontario

	Ear Falls	%	District of Kenora	%	Ontario	%
Total experienced labour force (15 years and over)	715	-	30,660	-	6,473,730	-
Agriculture and other resource-based industries	145	20.3	2,720	8.9	190,000	2.9
Construction	10	1.4	1,730	5.6	384,775	5.9
Manufacturing	130	18.2	2,290	7.5	899,670	13.9
Wholesale trade	25	3.5	455	1.5	307,465	4.7
Retail trade	70	9.8	3,980	13.0	720,235	11.1
Finance and real estate	15	2.1	930	3.0	442,610	6.8
Health care and social services	45	6.3	4,505	14.7	611,740	9.4
Educational services	70	9.8	2,590	8.4	433,485	6.7
Business services	55	7.7	3,480	11.4	1,274,345	19.7
Other services	145	20.3	7,990	26.1	1,209,390	18.7

Source: Statistics Canada 2007

Note: The most recent census data (2011) are not published at this time.

NTAB⁸² uses the Canadian Business Pattern data, and provides a comparison of the economy of the District of Kenora and Ontario in terms of the number of businesses operating in each industry sector (see Table 4.2-4). The term “distribution” in Table 4.2-4 refers to the number of businesses operating in a sector locally as a percentage of the total number of businesses operating in the area. This percentage is then compared to industry activity at the provincial level to provide an indicator of the importance of that industry locally.

Table 4.2-4 Distribution of Businesses in the District of Kenora Economy as Compared to Ontario (2010)

Industry	Kenora Total	Distribution (%)	Ontario Total	Distribution (%)
Agriculture, Forestry and Fishing	160	4.8	33,772	3.8
Mining and Heavy Construction	395	12.0	101,530	11.5
Manufacturing	61	1.8	33,570	3.8
Wholesale & Retail Sales & Transportation	775	23.5	172,001	19.5
Finance, Insurance, Real Estate (F.I.R.E.), Professional & Scientific	760	23.0	357,090	40.6
Education, Health Care & Social Assistance	238	7.2	5,3879	6.1
Tourism, Culture and Recreation	548	16.6	49,890	5.7
Personal Services	305	9.2	77,279	8.8
Government Services	61	1.8	1,347	0.1
Total	3,303	100.00	880,358	100.00

Source: NTAB 2011a

4.3 COMMUNITY PATTERNS WITH REGION AND PROVINCE SUMMARY

The available data indicate that overall, when compared to the District of Kenora and the Province of Ontario, Ear Falls’ population decline has been significant. The age profile in Ear Falls is comparable to the District of Kenora, and slightly younger than that of Ontario. Ear Falls has the lower unemployment rate in 2006 compared to the District of Kenora and Ontario. Additionally, Ear Falls has a higher percentage of its population with high school certificates or equivalent; apprenticeships or trade certificates or diplomas; and, college, CEGEP or other non-university certificates or diplomas, when compared with the District of Kenora and Ontario. Ear Falls’ labour force also shows a higher level of experience base in agriculture and other resource-based industries.

⁸² NTAB 2011a.

5.0 REFERENCES

211 Ontario North n.d. 211OntarioNorth.ca. <http://search.211north.ca/>

BCG Communications (BCG) 2010. *The Corporation of the Township of Ear Falls Development and Implementation of a Marketing Plan*. Phase 3 Marketing Plan Development. March 2010.

Chukuni Communities Development Corporation (CCDC) 2003. *Business Retention and Expansion*. Ear Falls, Ontario. Prepared by Michelle James, Intern. April 2003.

Chukuni Communities Development Corporation (CCDC) n.d. Welcome to Chukuni. Official Website <http://www.chukuni.com/>

“Ear Falls Kids (A Short Documentary)”. [YouTube](#). 12April 2012. Web 14August 2012.

Golder Associates 2011. *Initial Screening For Siting a Deep Geological Repository for Canada’s Used Nuclear Fuel*. Township of Ear Falls, Ontario. Submitted to Nuclear Waste Management Organization. April 2011.

Insights Northwest 2011. *Resource Mapping Project*. Final Report for Dryden Development Corporation. June 24, 2011.

Kenora District Service Board (KDSB) 2012. *Kenora District Communities*. <http://www.kdsb.on.ca/communities.htm>

Lederer, J. 2009. *Socioeconomic Impact Assessment*. Prepared for the Ignace Citizen Encouraged Community Adjustment Committee (ICE CAP). University of Waterloo School of Architecture. Edited by Victoria Beltrano and Renderings by Heather Brown. May.

Meridian Planning Consultants Inc (Meridian) 2011. *Strategic Plan Township of Ear Falls*. December.

Ministry of Infrastructure/ Ministry of Northern Development, Mines and Forestry 2011. *Places to Grow*. *Growth Plan for Northern Ontario 2011*. <https://www.placestogrow.ca/images/pdfs/GPNO-final.pdf>

Ministry of Municipal Affairs and Housing (MMAH) 2012. 2011 *Financial Information Return (FIR)*. Ear Falls. December.

Northwest Business Centre n.d. www.nwbiz.ca

Northwest Health Unit 2011. *Community Engagement Summary Report 2011 Ear Falls Ontario*.
<http://www.nwhu.on.ca/about/hur-performance-indicators.php>

Northwestern Ontario Joint Task Force 2012. *Regional Economic Development Planning Zones Pilot Project*. March 2012.

Northwest Training and Adjustment Board (NTAB) 2011a. *Trends Opportunities Priorities (TOP) Report*. February.

Northwest Training and Adjustment Board (NTAB) 2011b. *Workforce Focus. Health Care in the Northwest Region*. 6(3). September.

Ontario Parks 2011. *Park Statistics 2011*.

Ontario Parks 2010. *Park Statistics 2010*.

Ontario Parks 2009. *Park Statistics 2009*.

Ontario Parks 2008. *Park Statistics 2008*.

Runesson, U.T. 2011. *Ontario's Northwest Forest. Northwest History. Past*. Faculty of Natural Resources Management. Lakehead University.
http://www.borealforest.org/index.php?category=ont_nw_forest&page=history

Schmallegger, D. and D. Carson. 2010. *Is tourism just another staple? A new perspective on tourism in remote regions*. 13(3), 201-221. May.

Statistics Canada 2012a. *2011 Community Profiles*. 2011 Census. Statistics Canada. Ottawa.

Statistics Canada 2012b. *Kenora, Ontario (Code 3560) and Ontario (Code 35) (table). Census Profile*. 2011 Census. Statistics Canada Catalogue no. 98-316-XWE. Ottawa.

Statistics Canada 2007. *2006 Community Profiles*. 2006 Census. Statistics Canada. Ottawa.

Statistics Canada 2002. *2001 Community Profiles*. 2001 Census. Statistics Canada. Ottawa.

Statistics Canada 1997. *1996 Community Profiles*. 1996 Census. Statistics Canada. Ottawa.

Sunset Country Travel Association n.d. Towns and Cities in Northwestern Ontario, Canada, Ear Falls, Ontario, Canada <http://www.ontariotowns.net/EarFalls/>

The Corporation of the Township of Ear Falls 2011. November 16 Council #21 Minutes.

Township of Ear Falls 2011. *Economic Development Committee Strategic Plan*. May 2011.

Township of Ear Falls n.d. Township of Ear Falls (Official Website). <http://www.ear-falls.com/>

Wozniczka, Izabela A., Rhonda L. Koster, Raynald (Harvey) Lemelin. 2010. *Communities in Transition: Changing Views on Tourism Development as a Vehicle for Economic Diversification in Northern Ontario, Canada*. *Journal of Rural and Community Development* 5, ½ (2010), 90-102.