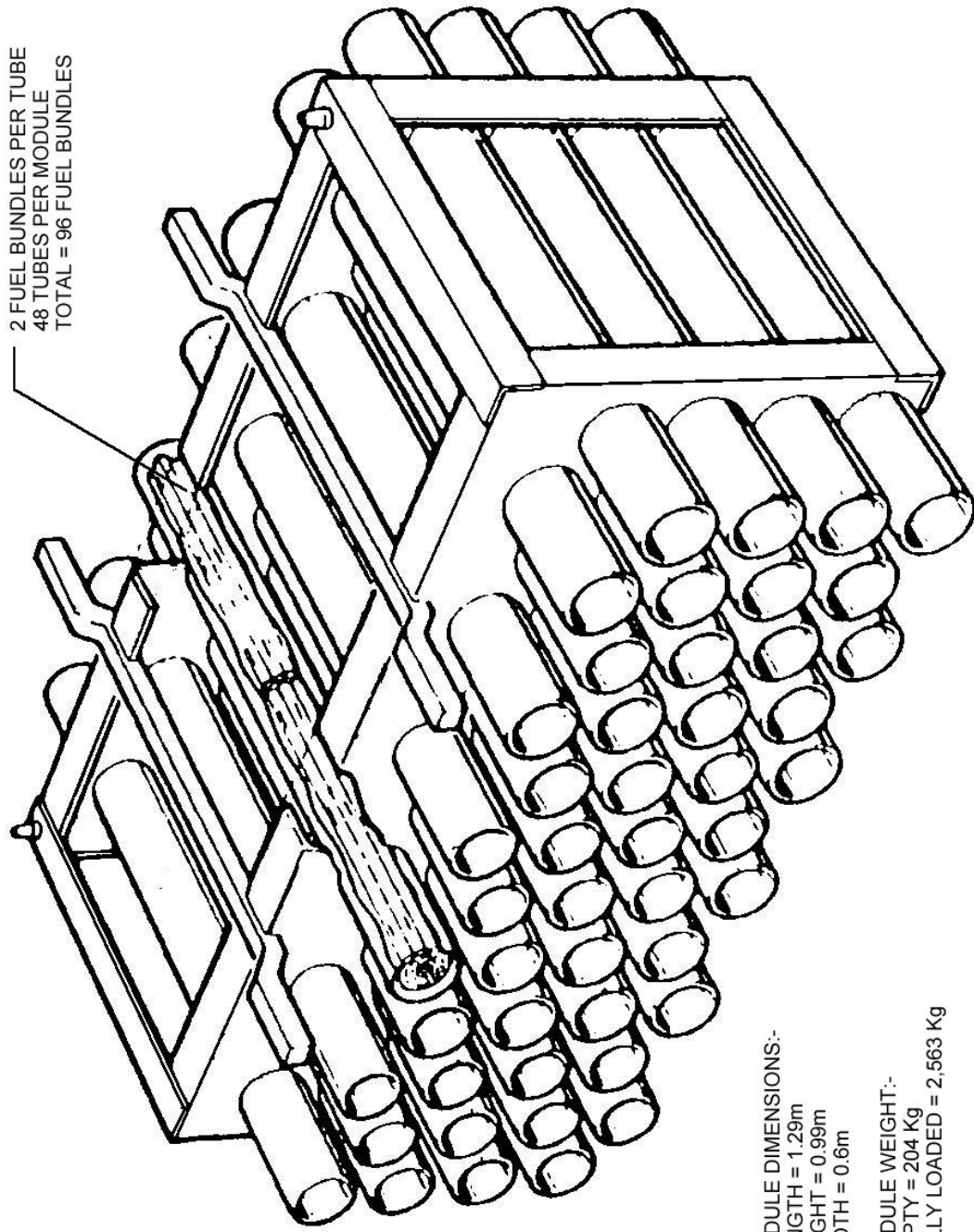


Figure 5.1 – Fuel Bundle

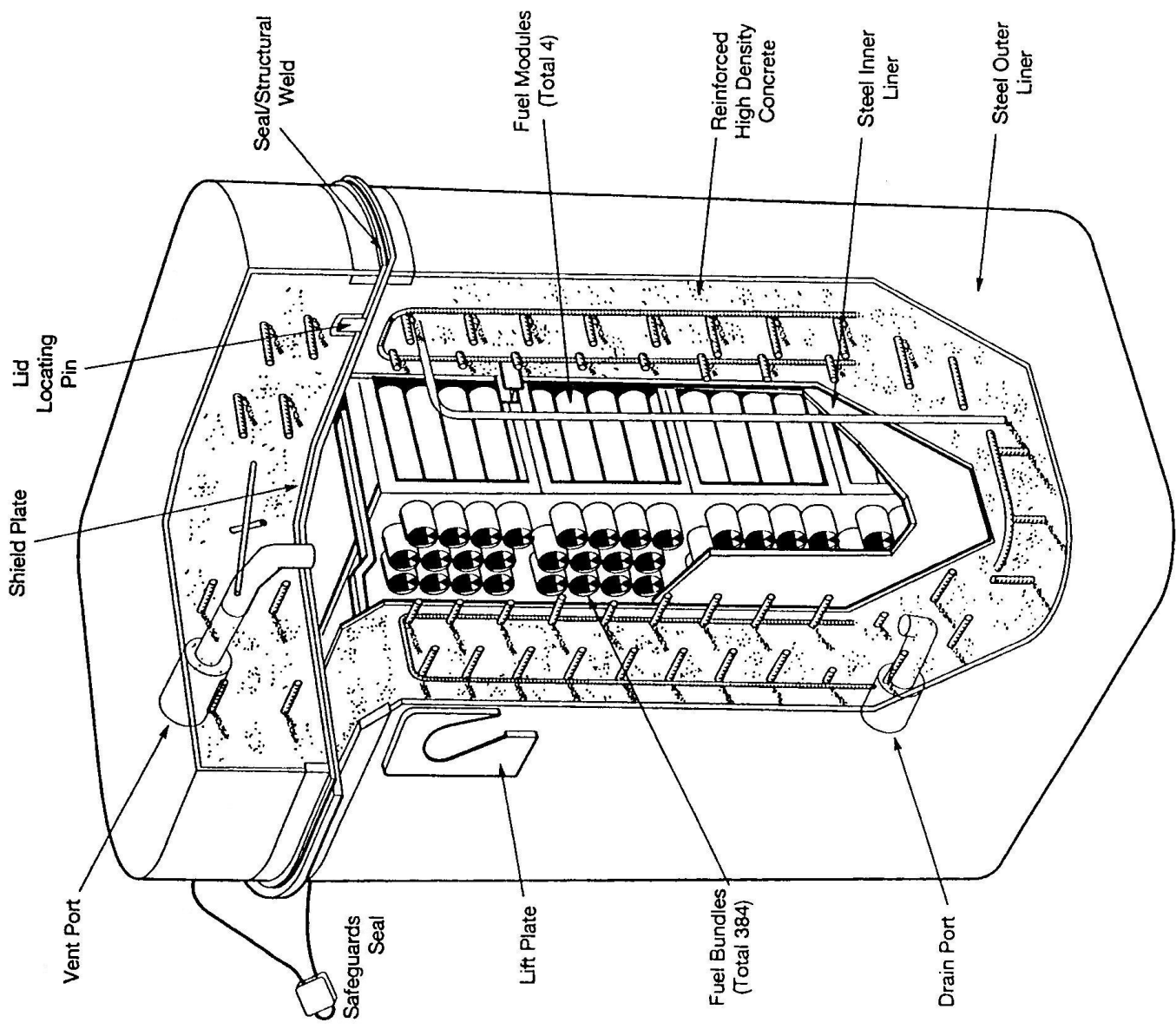


MODULE DIMENSIONS:-
LENGTH = 1.29m
HEIGHT = 0.99m
WIDTH = 0.6m

MODULE WEIGHT:-
EMPTY = 204 Kg
FULLY LOADED = 2,563 Kg



Figure 5.2 – Fuel Module

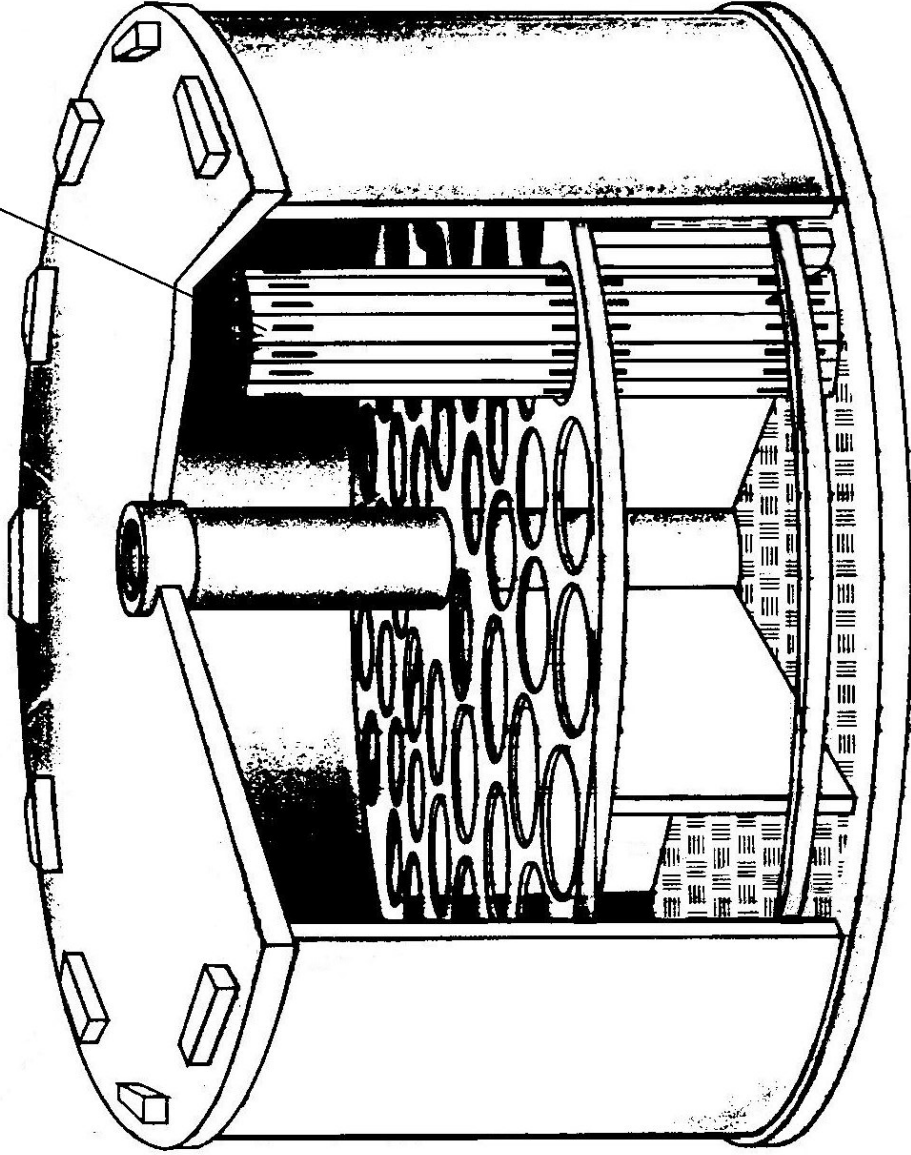


MODULE STORAGE CASK DIMENSIONS:-
 WIDTH = 2.120m
 DEPTH = 2.419m
 HEIGHT - 3.550m

MODULE STORAGE CASK WEIGHTS:-
 EMPTY = 60,000 Kg
 FULLY LOADED = 70,000 Kg
 (384 FUEL BUNDLES)

Figure 5.3
Module Storage Cask

60 FUEL BUNDLES
PER FUEL BASKET



FUEL BASKET WEIGHTS:-
EMPTY = 450 Kg
FULLY LOADED = 1924 Kg
(60 FUEL BUNDLES)

FUEL BASKET DIMENSIONS:-
OUTSIDE DIAMETER = 1070mm
HEIGHT = 560mm

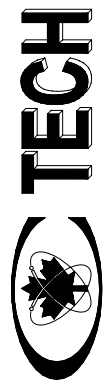
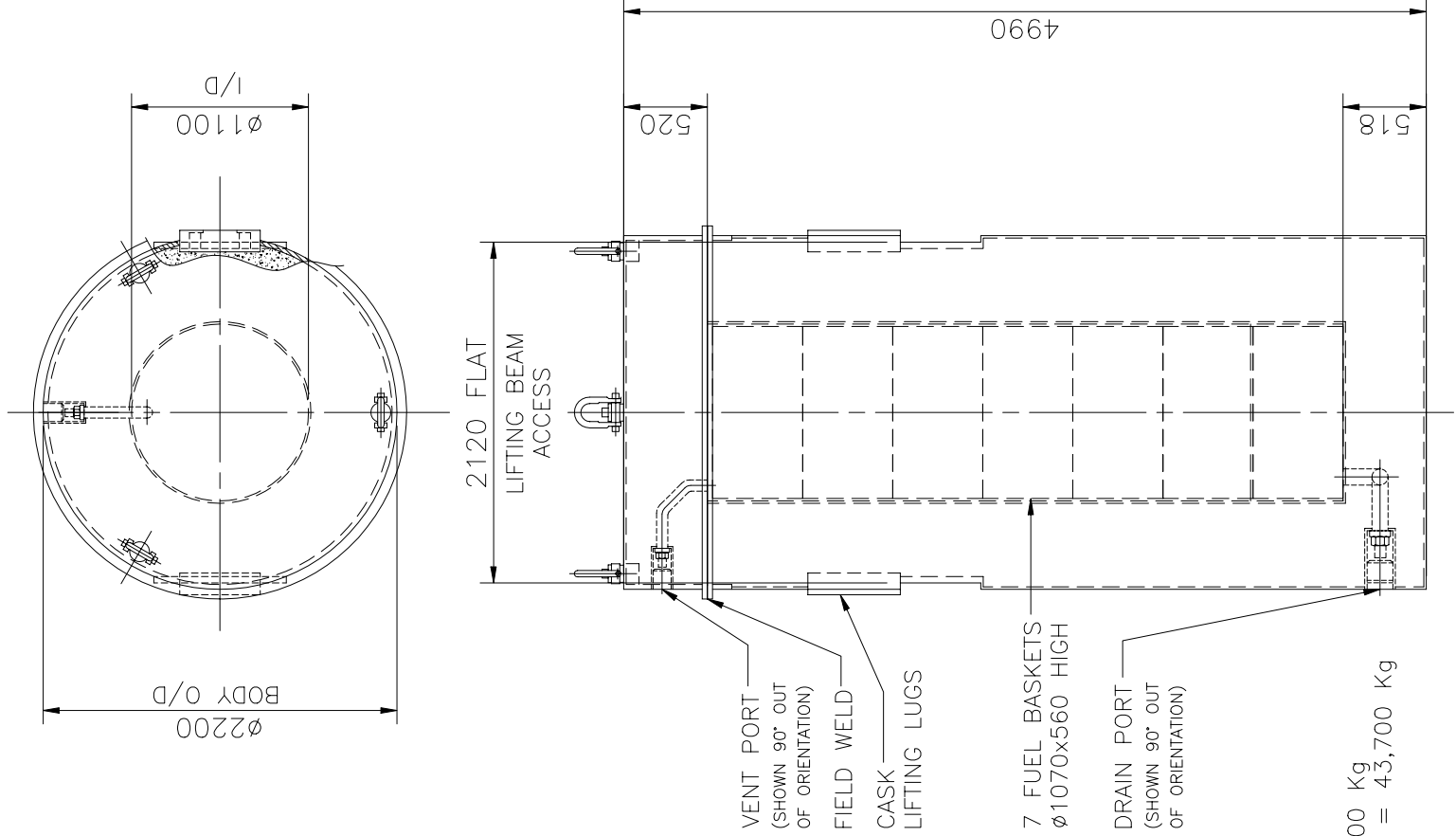
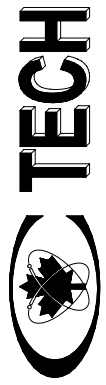


Figure 5.4 – Fuel Basket



WEIGHTS :-
 EMPTY = 30,200 Kg
 FULLY LOADED = 43,700 Kg

Figure 5.5
Basket Storage Cask



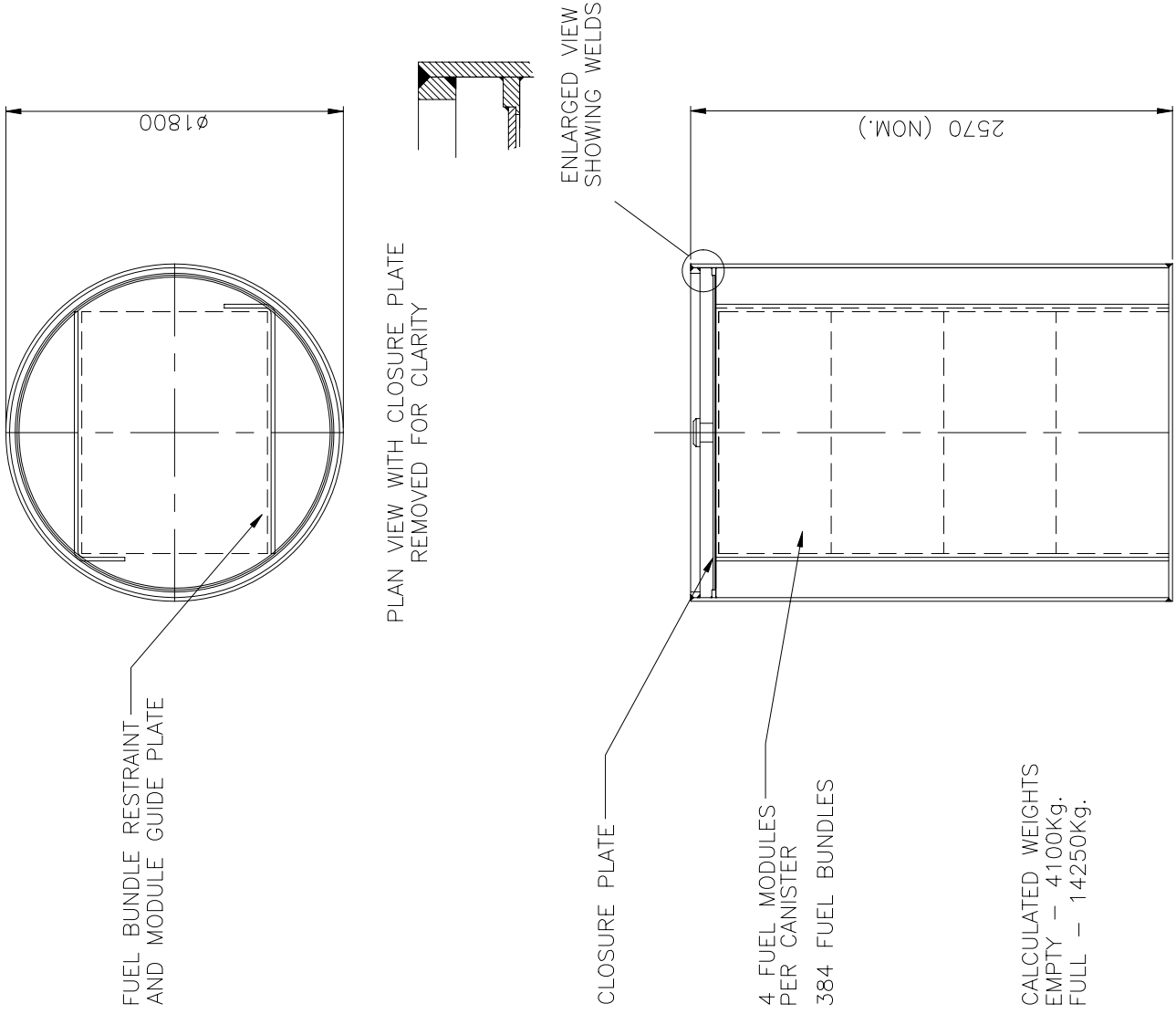
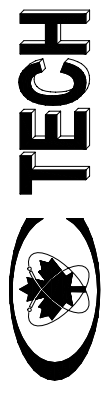


Figure 5.6
Module Canister



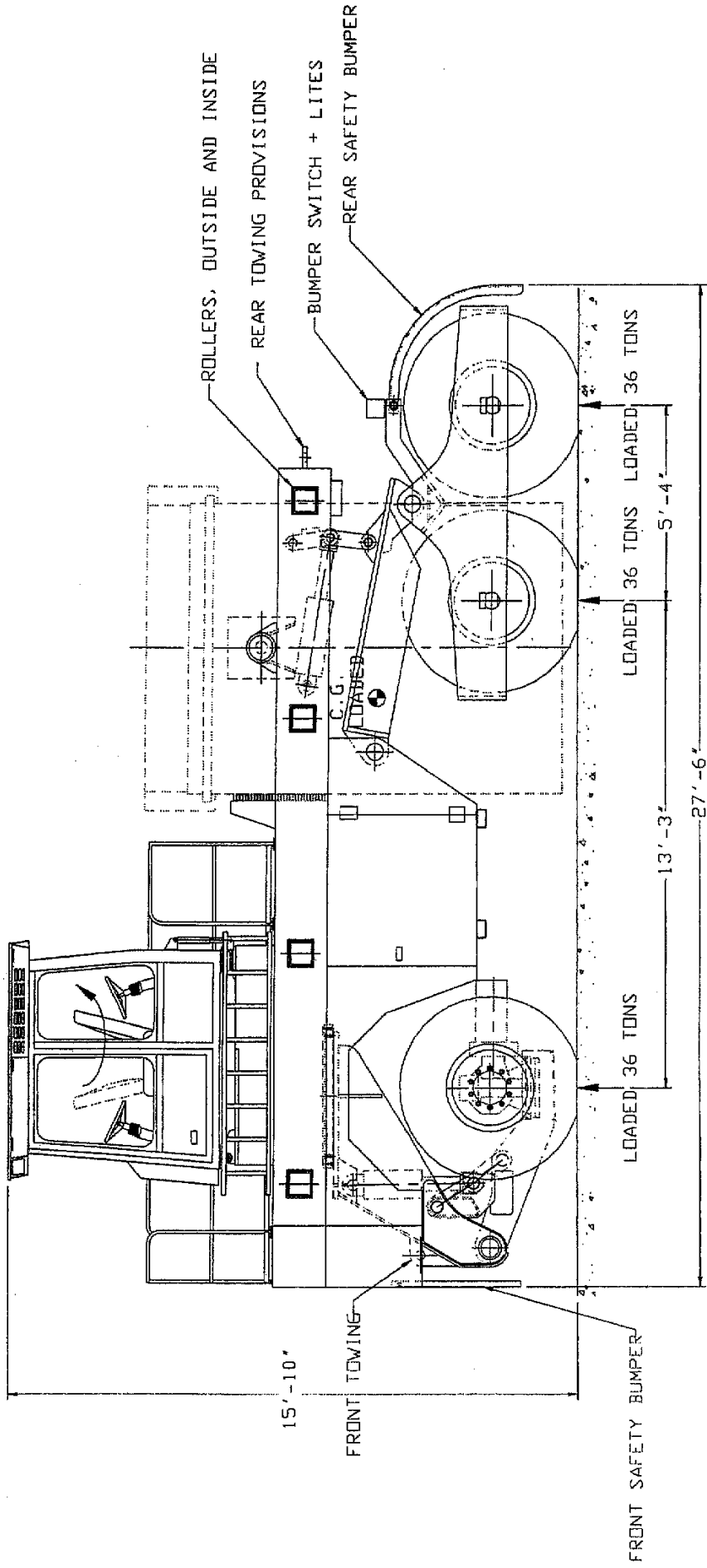
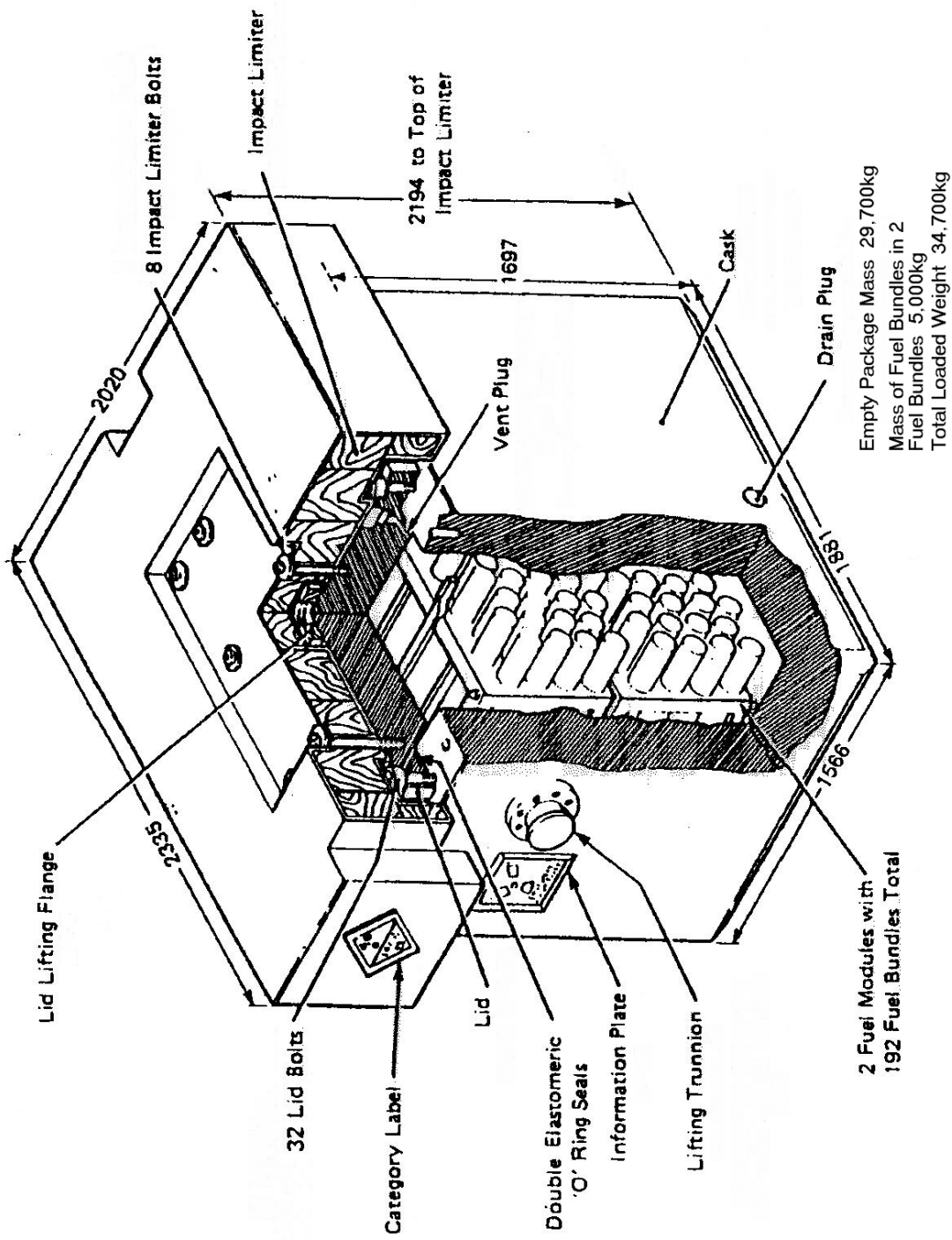


Figure 5.7 – Cask Transporter



**Figure 5.8 – Irradiated Fuel Transportation Cask
 (Complete with Impact Limiter)**