

FIGURE 1.1
SITE PLAN
CASKS AND VAULTS
IN STORAGE BUILDINGS



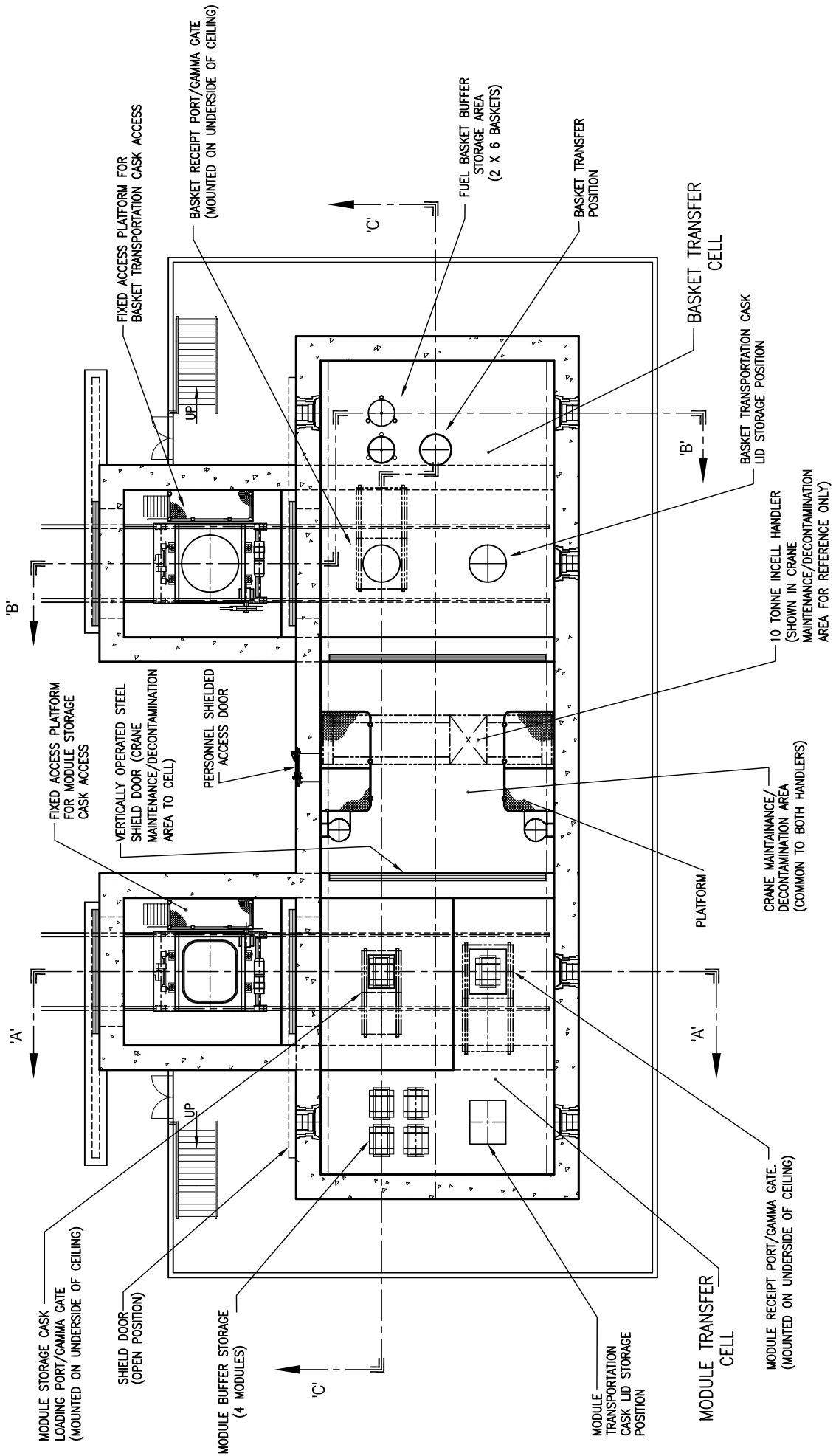
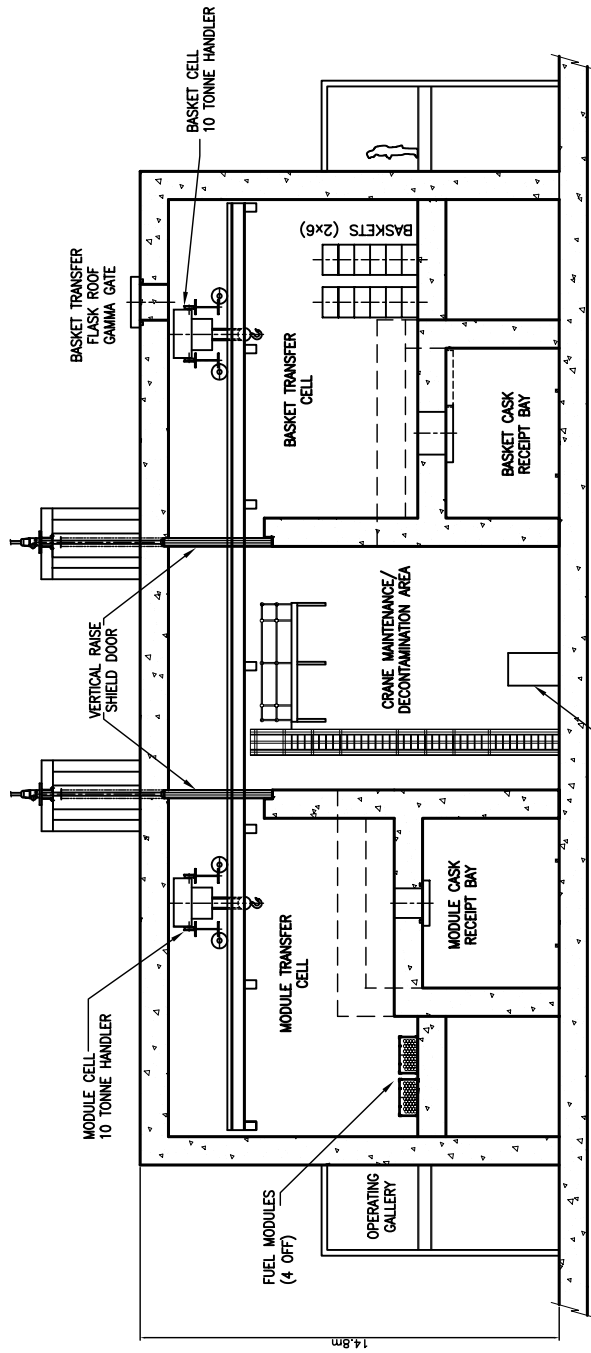


FIGURE 1.2
SHIELDED CELL LAYOUT
CASKS AND VAULTS IN STORAGE BUILDINGS.
 (SHEET 1 OF 2)



SECTION 'C-C'

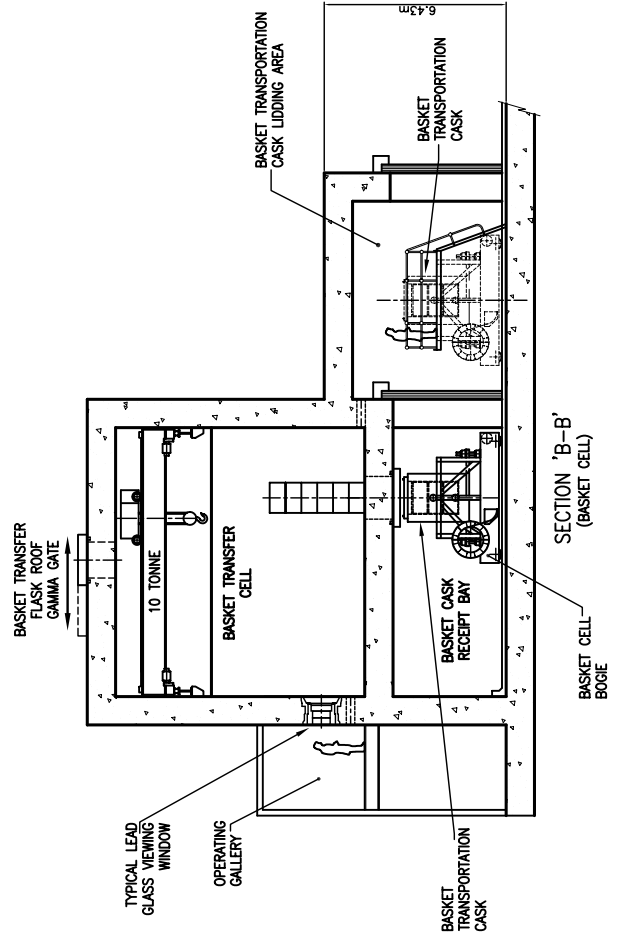
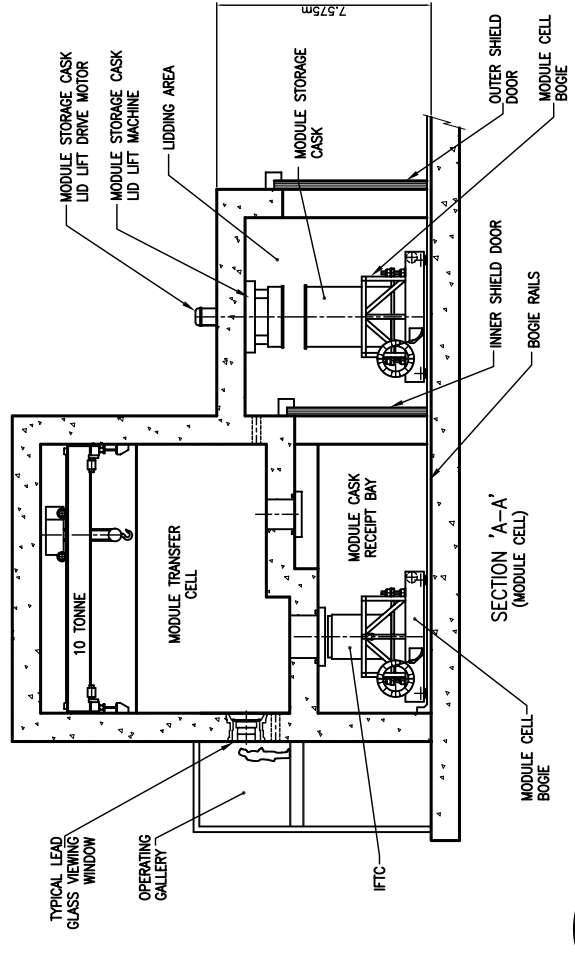
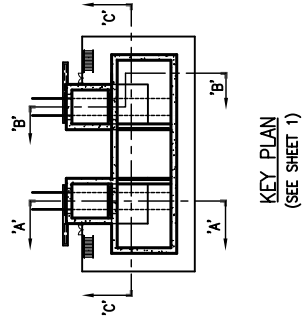
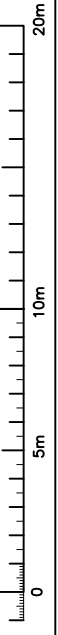


FIGURE 1.3

SHIELDED CELL SECTIONS
 CASKS AND VAULTS IN STORAGE BUILDINGS.



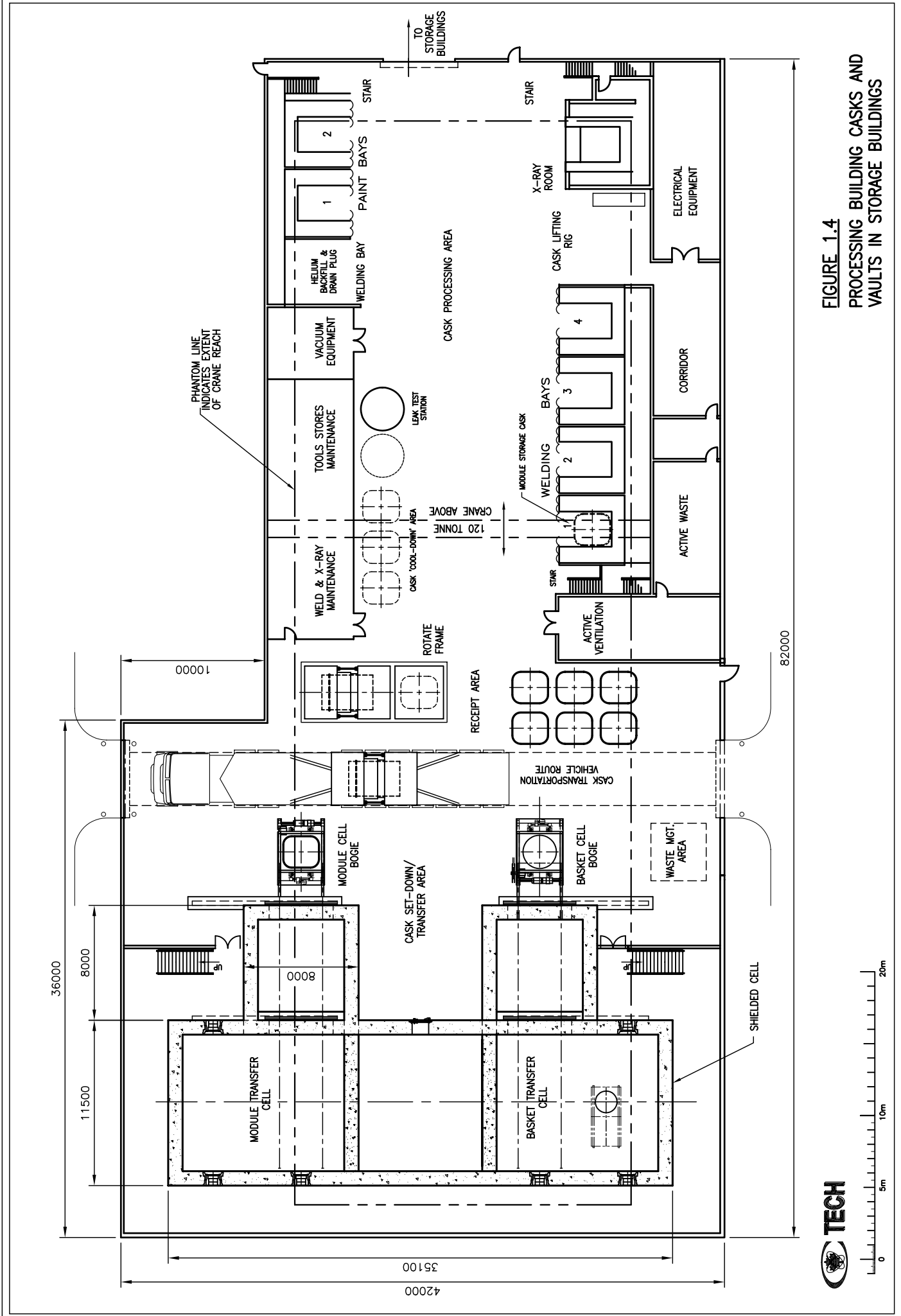


FIGURE 1.4
PROCESSING BUILDING CASKS AND
VAULTS IN STORAGE BUILDINGS



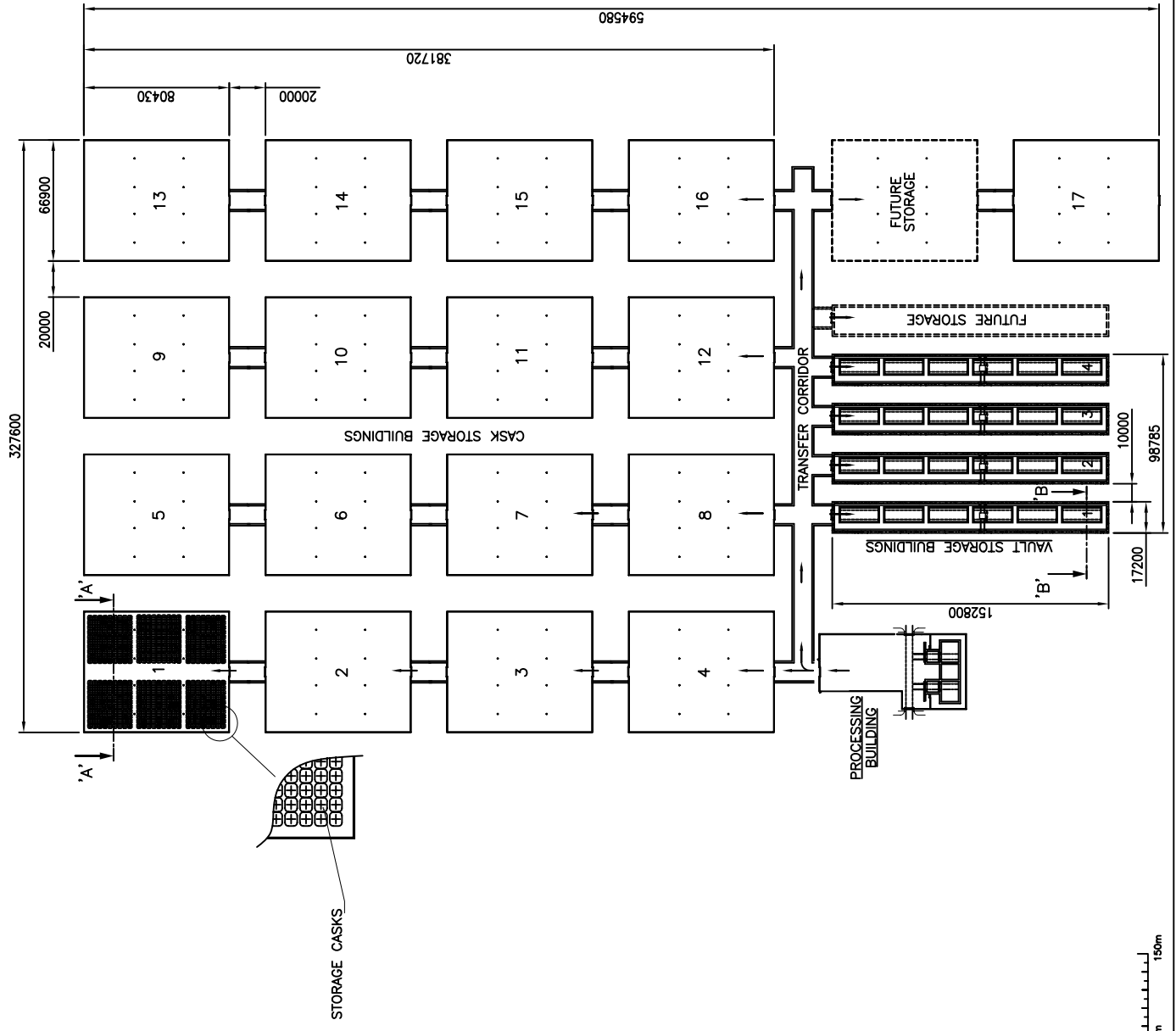
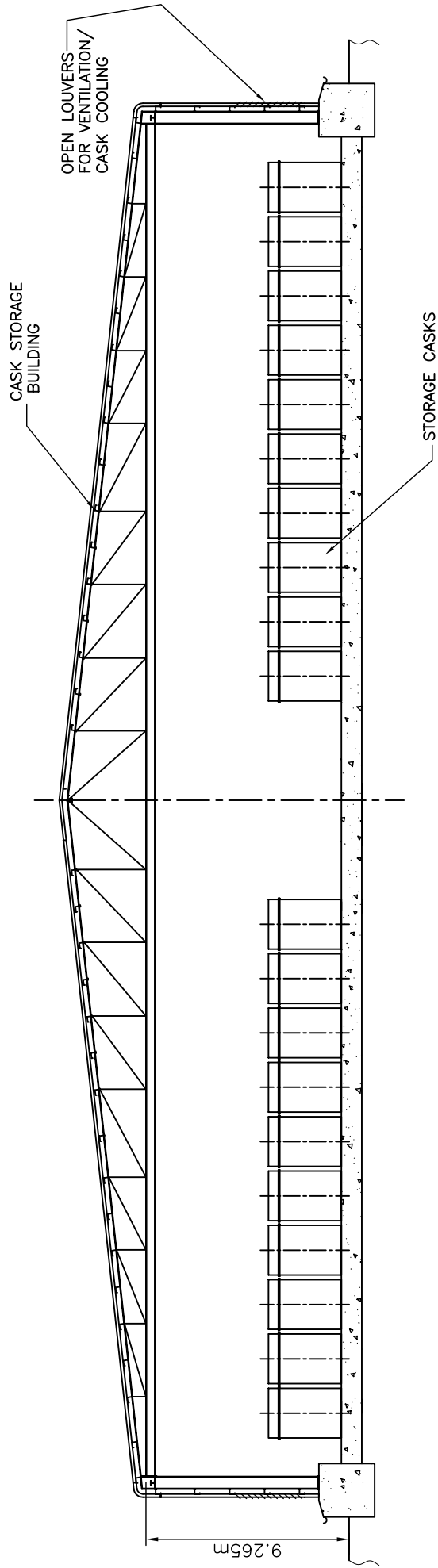


FIGURE 1.5
CASKS AND VAULTS IN
STORAGE COMPLEX





SECTION 'A-A'
FROM FIG. 1.5

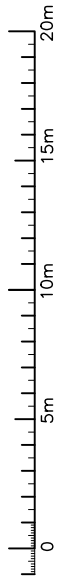
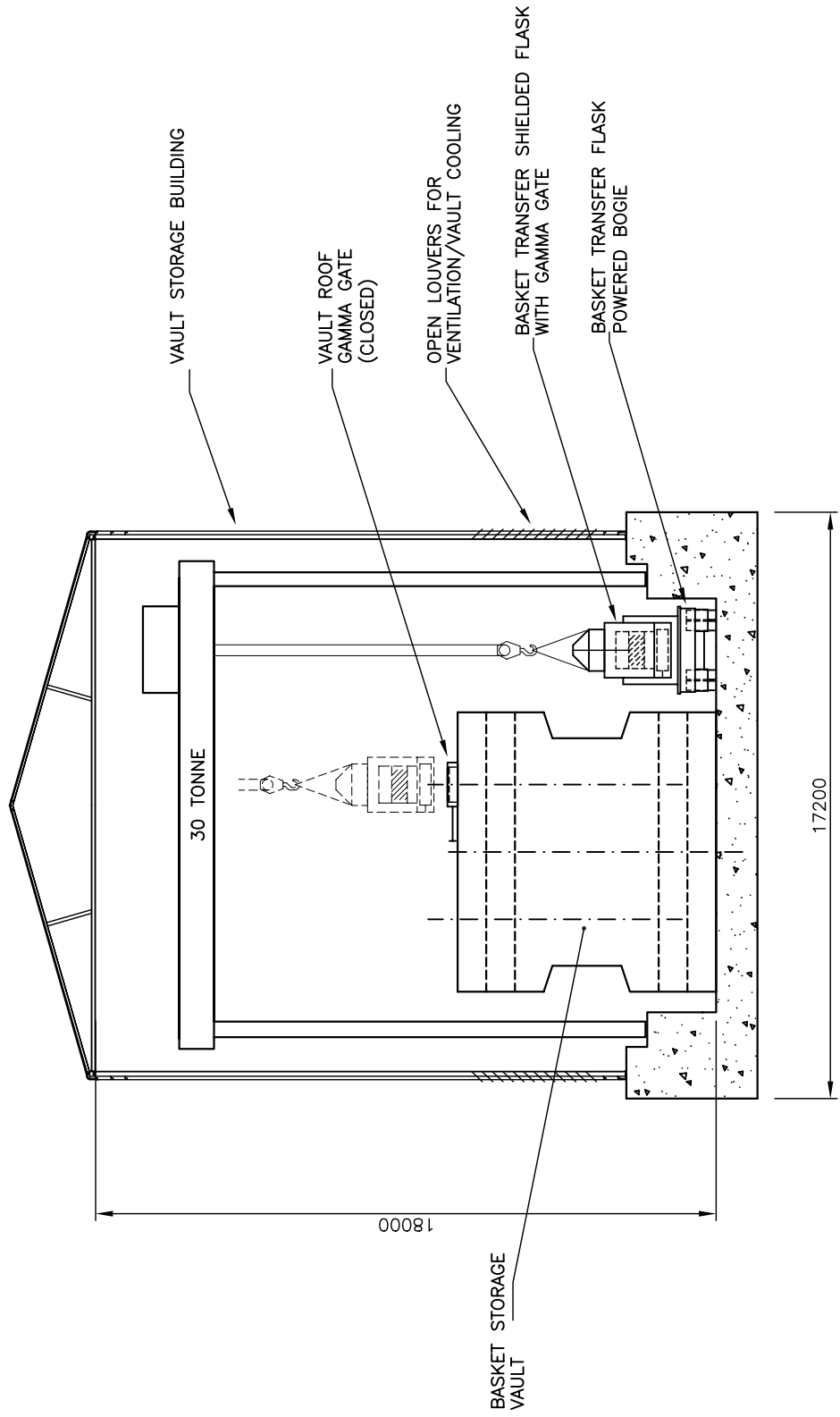


FIGURE 1.6
STORAGE CASKS AND VAULTS
IN STORAGE BUILDING
SECTIONAL VIEW (CASKS).



SECTION B-B
FROM FIGURE 1.5

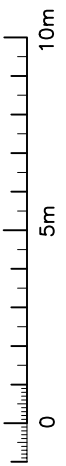


FIGURE 1.7
CASKS AND VAULTS IN STORAGE BUILDINGS
SECTIONAL VIEW (VAULTS)

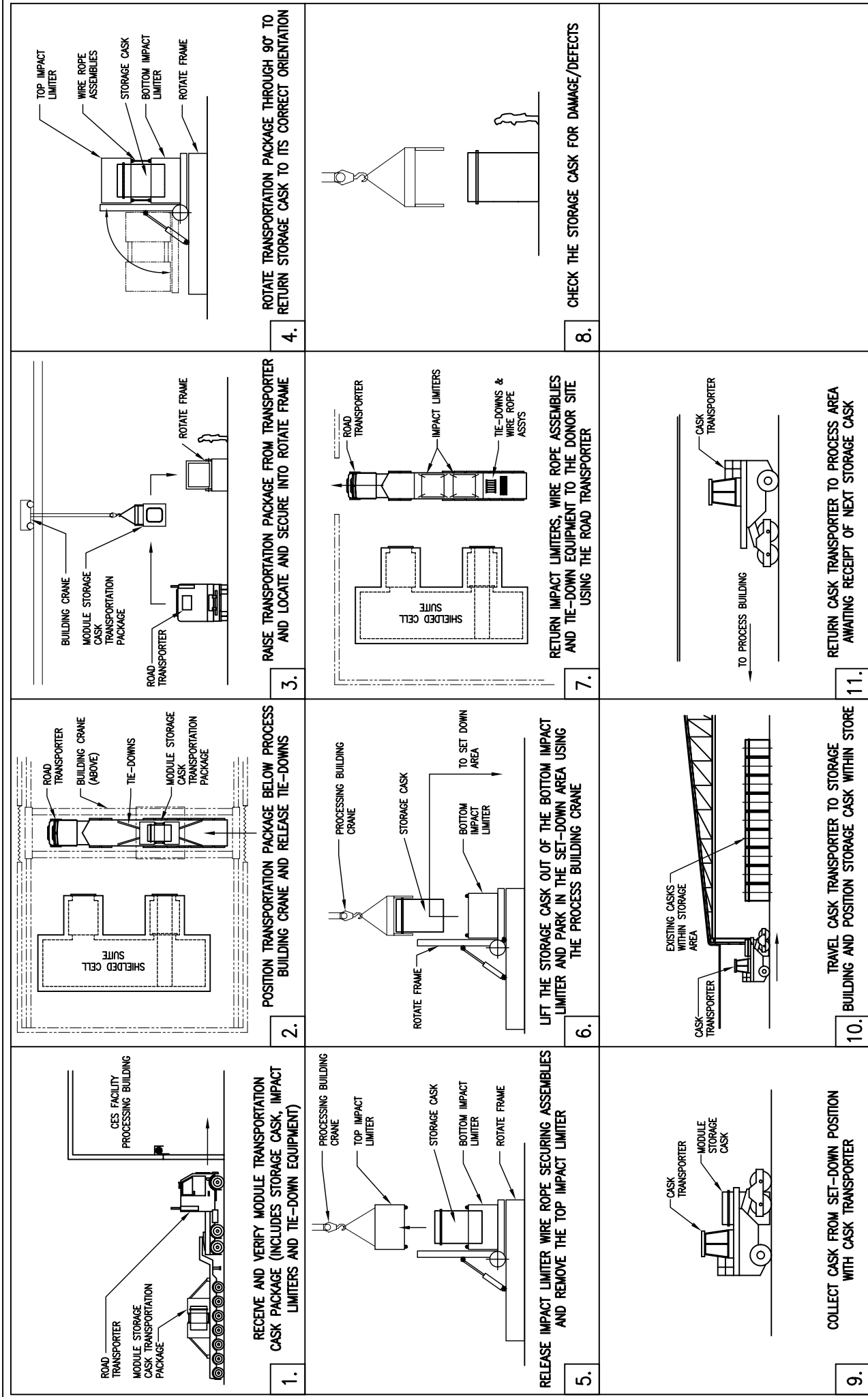
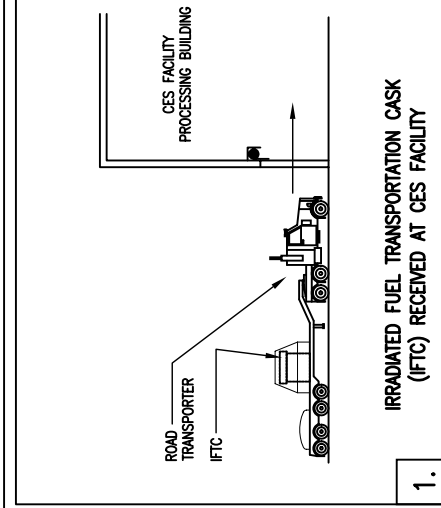
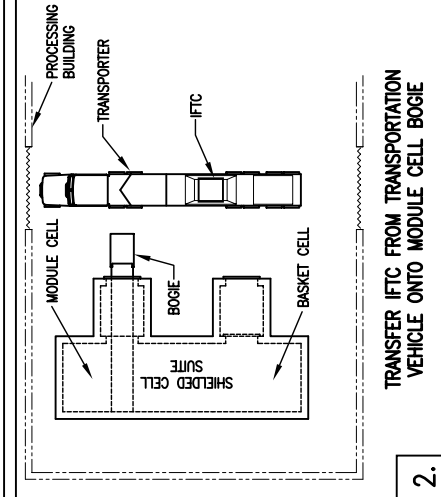


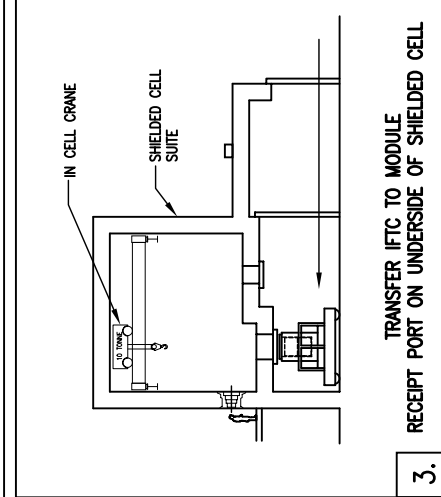
FIGURE 1.8
 SEQUENCE DIAGRAM
 CASKS AND VAULTS IN STORAGE BUILDINGS
 EXISTING CASK, RECEIPT AND EMPLOYMENT



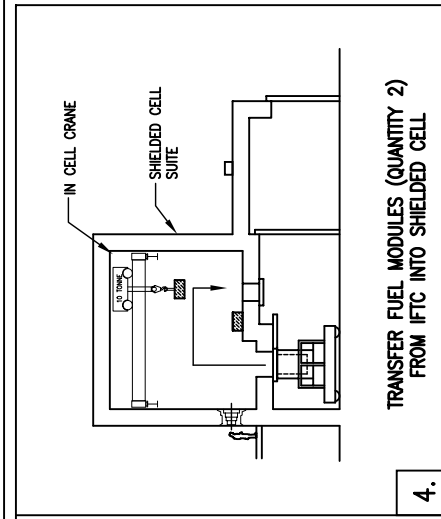
1. IRRADIATED FUEL TRANSPORTATION CASK (IFTC) RECEIVED AT CES FACILITY



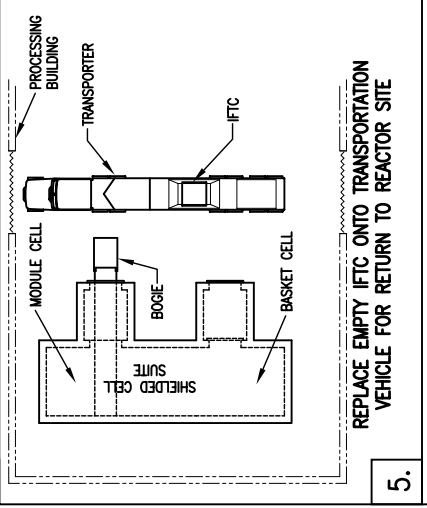
2. TRANSFER IFTC FROM TRANSPORTATION VEHICLE ONTO MODULE CELL BOGIE



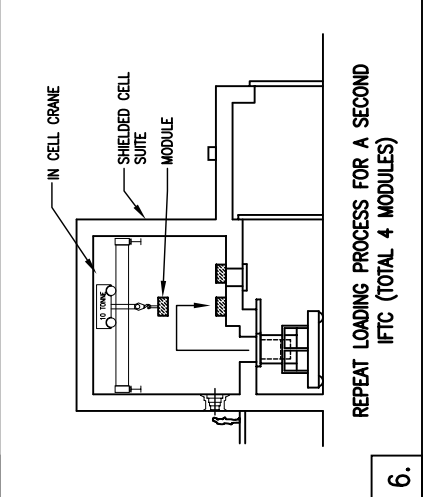
3. TRANSFER IFTC TO MODULE RECEIPT PORT ON UNDERSIDE OF SHIELDED CELL



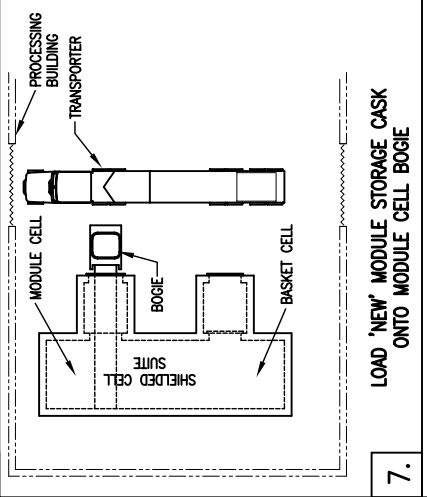
4. TRANSFER FUEL MODULES (QUANTITY 2) FROM IFTC INTO SHIELDED CELL



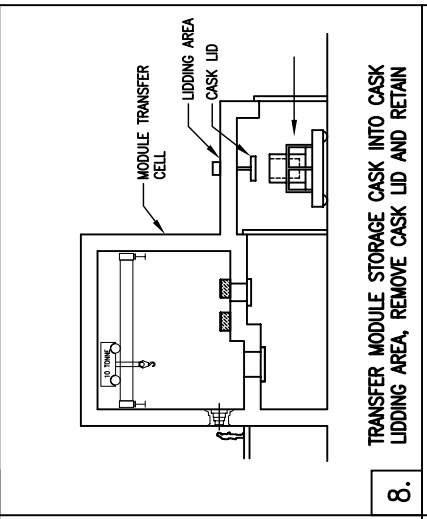
5. REPLACE EMPTY IFTC ONTO TRANSPORTATION VEHICLE FOR RETURN TO REACTOR SITE



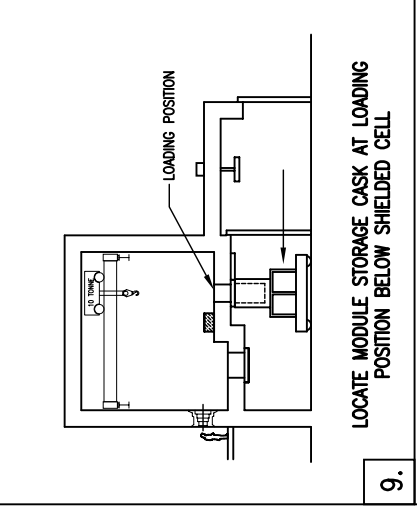
6. REPEAT LOADING PROCESS FOR A SECOND IFTC (TOTAL 4 MODULES)



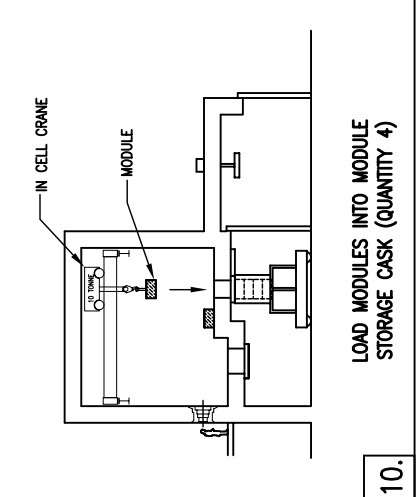
7. LOAD 'NEW' MODULE STORAGE CASK ONTO MODULE CELL BOGIE



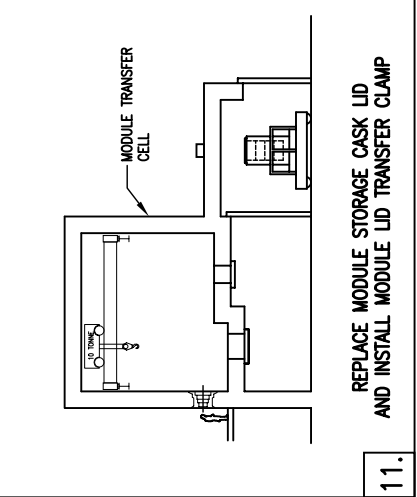
8. TRANSFER MODULE STORAGE CASK INTO CASK LIDDING AREA, REMOVE CASK LID AND RETAIN



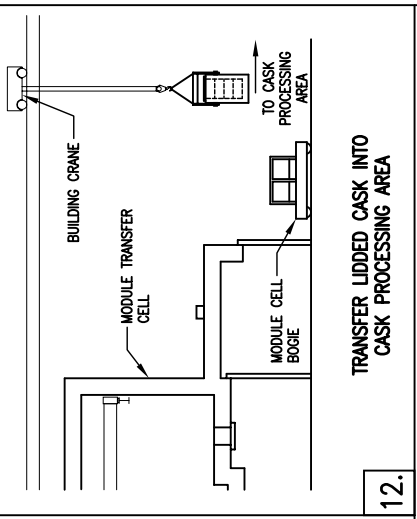
9. LOCATE MODULE STORAGE CASK AT LOADING POSITION BELOW SHIELDED CELL



10. LOAD MODULES INTO MODULE STORAGE CASK (QUANTITY 4)



11. REPLACE MODULE STORAGE CASK LID AND INSTALL MODULE LID TRANSFER CLAMP

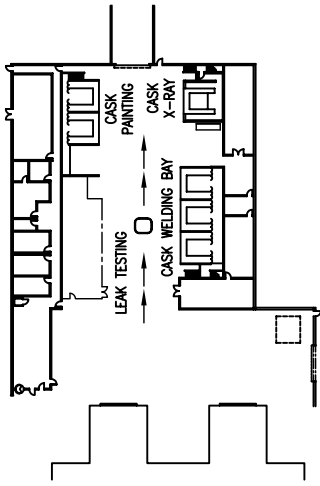


12. TRANSFER LIDDED CASK INTO CASK PROCESSING AREA

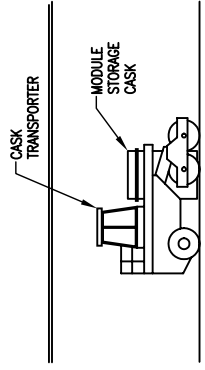
FIGURE 1.9 (SHEET 1 OF 2)

SEQUENCE DIAGRAM
CASKS AND VAULTS IN STORAGE BUILDINGS
CASK LOADING AND EMPLOYMENT

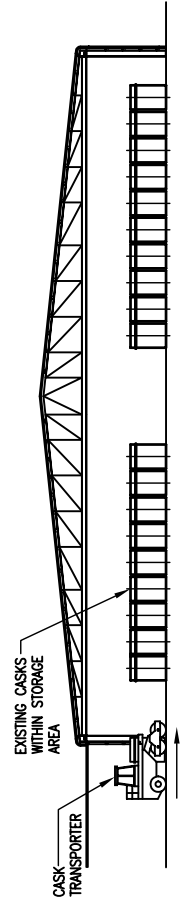




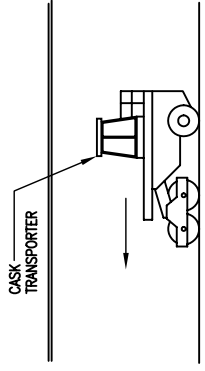
13. MODULE STORAGE CASK PROGRESSED THROUGH CASK CLOSURE INSPECTION AND VALIDATION OPERATIONS



14. COMPLETED CASK COLLECTED BY CASK TRANSPORTER



15. CASK POSITIONED WITHIN STORAGE BUILDING

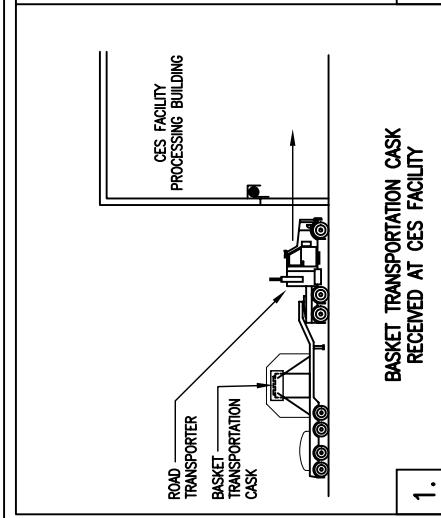


16. RETURN CASK TRANSPORTER TO PROCESS AREA AWAITING RECEIPT OF NEXT STORAGE CASK

FIGURE 1.9 (SHEET 2 OF 2)

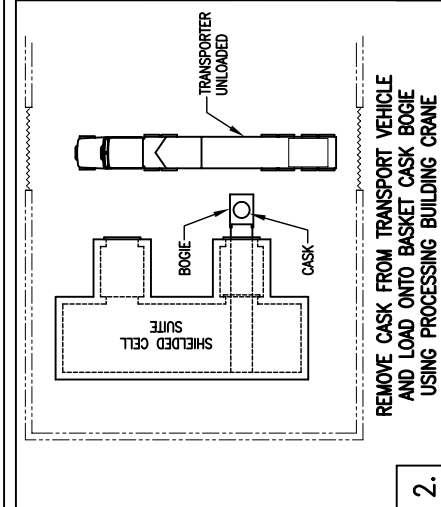
SEQUENCE DIAGRAM
CASKS AND VAULTS IN STORAGE BUILDINGS
CASK LOADING AND EMPACEMENT





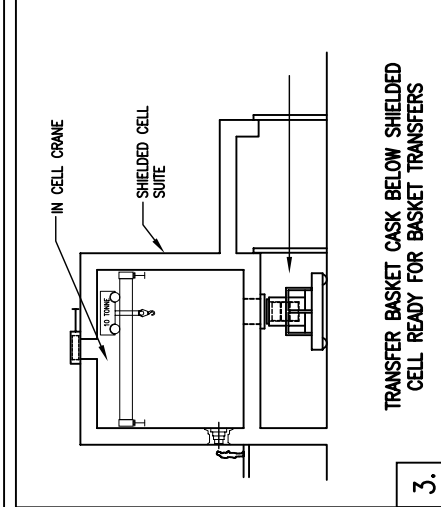
1.

BASKET TRANSPORTATION CASK RECEIVED AT CES FACILITY



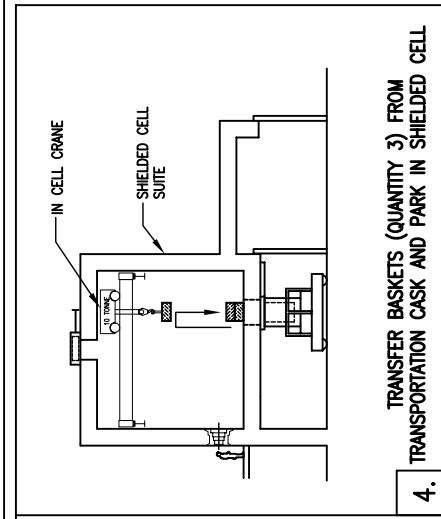
2.

REMOVE CASK FROM TRANSPORT VEHICLE AND LOAD ONTO BASKET CASK BOGIE USING PROCESSING BUILDING CRANE



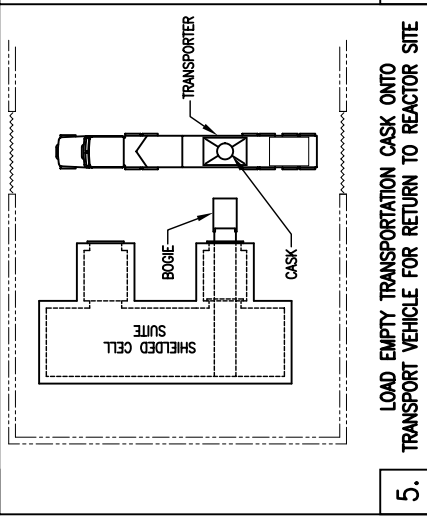
3.

TRANSFER BASKET CASK BELOW SHIELDED CELL READY FOR BASKET TRANSFERS



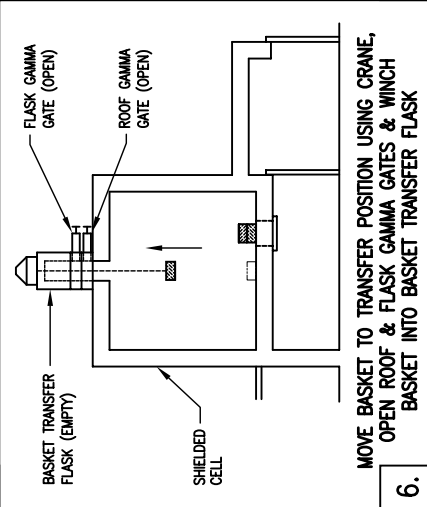
4.

TRANSFER BASKETS (QUANTITY 3) FROM TRANSPORTATION CASK AND PARK IN SHIELDED CELL



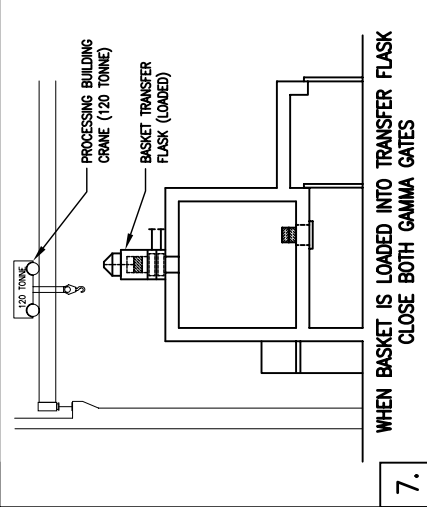
5.

LOAD EMPTY TRANSPORTATION CASK ONTO TRANSPORT VEHICLE FOR RETURN TO REACTOR SITE



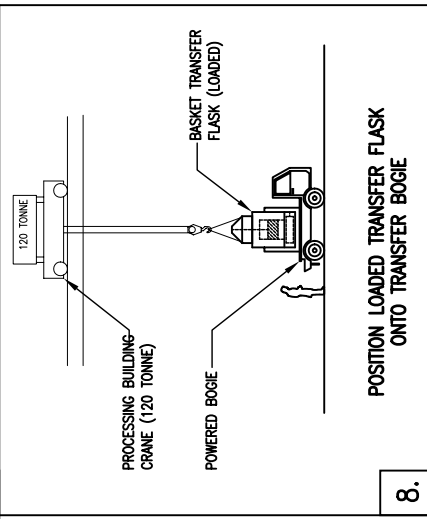
6.

MOVE BASKET TO TRANSFER POSITION USING CRANE, OPEN ROOF & FLASK GAMMA GATES & WINCH BASKET INTO BASKET TRANSFER FLASK



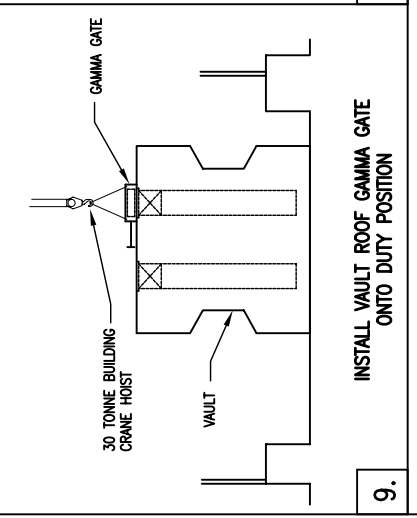
7.

WHEN BASKET IS LOADED INTO TRANSFER FLASK CLOSE BOTH GAMMA GATES



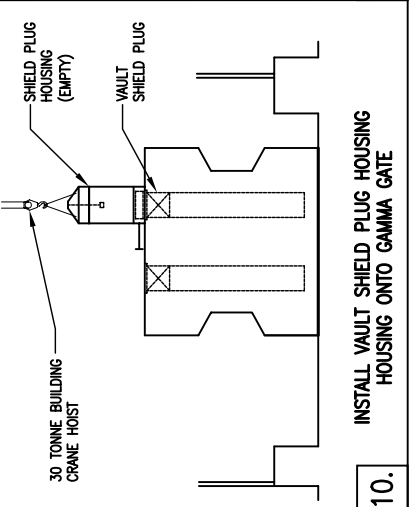
8.

POSITION LOADED TRANSFER FLASK ONTO TRANSFER BOGIE



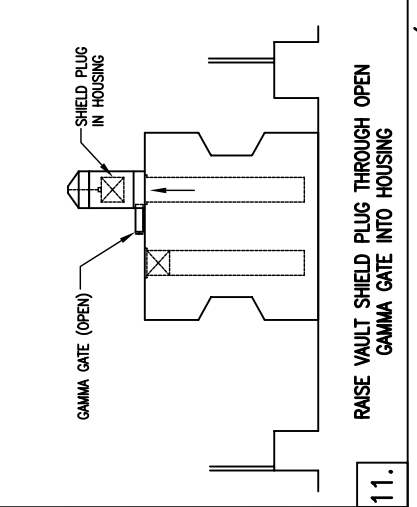
9.

INSTALL VAULT ROOF GAMMA GATE ONTO DUTY POSITION



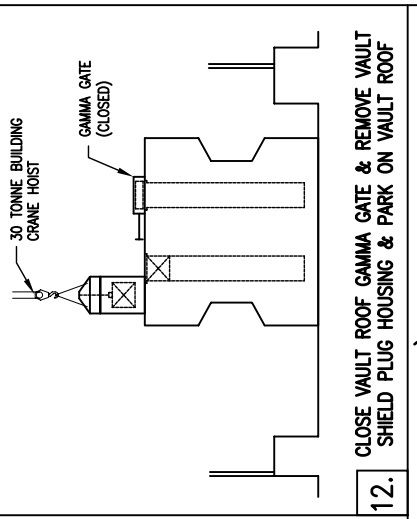
10.

INSTALL VAULT SHIELD PLUG HOUSING HOUSING ONTO GAMMA GATE



11.

RAISE VAULT SHIELD PLUG THROUGH OPEN GAMMA GATE INTO HOUSING

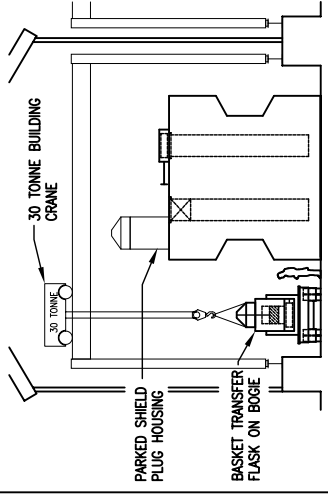


12.

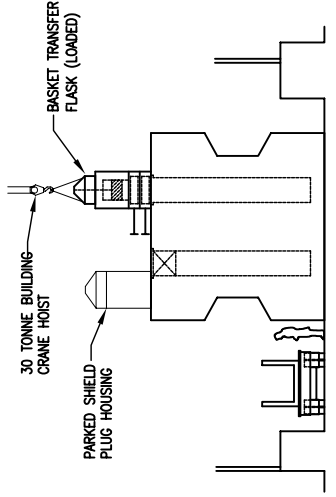
CLOSE VAULT ROOF GAMMA GATE & REMOVE VAULT SHIELD PLUG HOUSING & PARK ON VAULT ROOF

FIGURE 1.10 (SHEET 1 OF 2)
SEQUENCE DIAGRAM
CASKS AND VAULTS IN STORAGE BUILDINGS
VAULT LOADING, BASKET RECEIPT & EMPLACEMENT

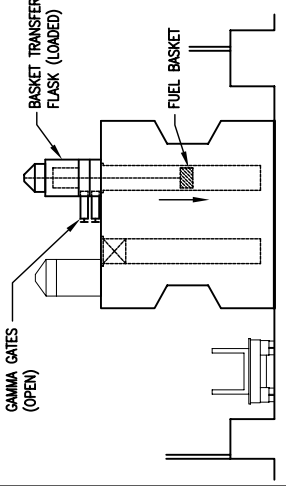




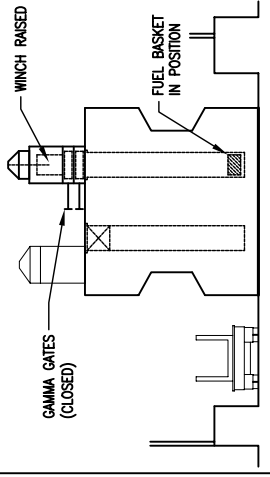
13. SEND TRANSFER BOGIE TO STORAGE VAULT BUILDING AND POSITION ADJACENT TO VAULT



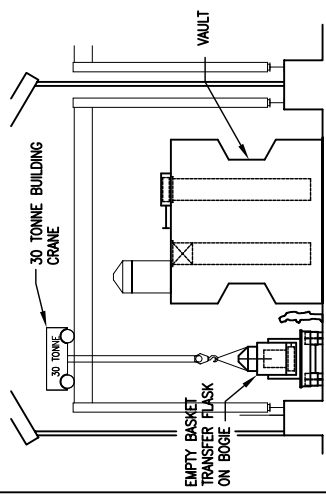
14. LOAD BASKET TRANSFER FLASK ONTO ROOF GAMMA GATE



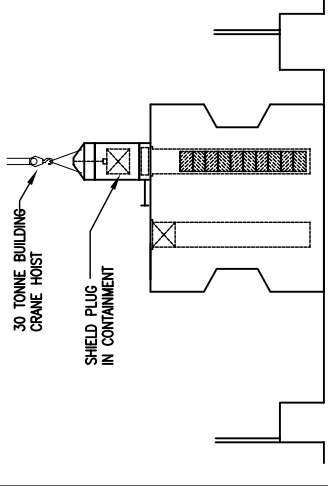
15. OPEN BOTH GAMMA GATES AND LOWER BASKET INTO STORAGE POSITION WITHIN VAULT



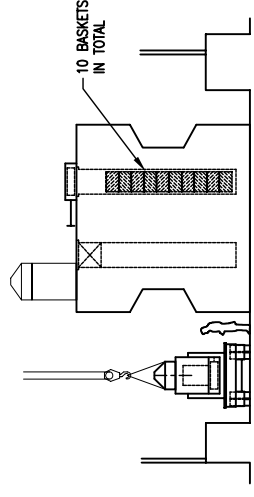
16. RAISE TRANSFER FLASK WINCH AND CLOSE BOTH GAMMA GATES



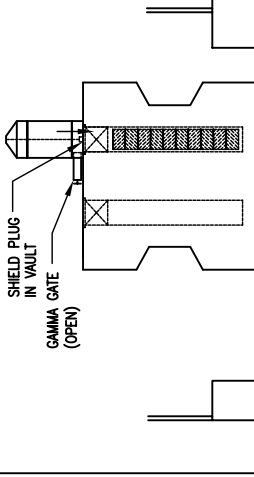
17. REPOSITION TRANSFER FLASK ONTO TRANSFER BOGIE FOR RETURN TO SHIELDED CELL



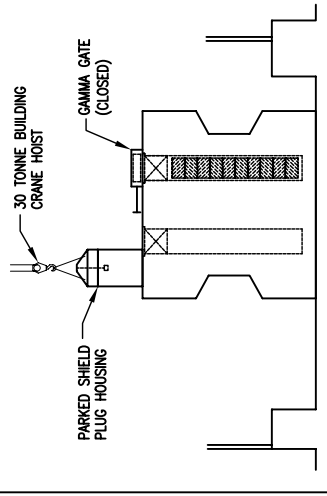
19. INSTALL VAULT SHIELD PLUG HOUSING ONTO VAULT ROOF GAMMA GATE



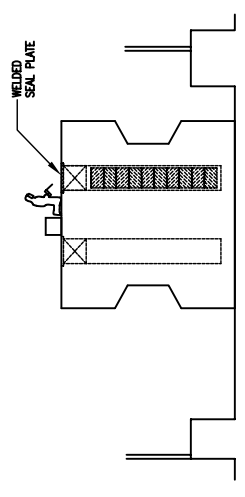
18. REPEAT LOADING SEQUENCE FOR FURTHER 9 BASKETS, TO COMPLETE VAULT LINER LOADING



20. OPEN GAMMA GATE AND LOWER SHIELD PLUG INTO VAULT LINER



21. CLOSE GAMMA GATE AND REMOVE & PARK SHIELD PLUG HOUSING



22. REMOVE VAULT ROOF GAMMA GATE, INSTALL AND SEAL WELD VAULT LINER SEAL PLATE ONTO VAULT

FIGURE 1.10 (SHEET 2 OF 2)
SEQUENCE DIAGRAM
CASKS AND VAULTS IN STORAGE BUILDINGS
VAULT LOADING, BASKET RECEIPT & EMPLACEMENT

