

## Appendix A : FIGURES

### General:

- Figure N°1 : Purpose of Used Fuel Transportation System
- Figure N°2 : Reactor Sites where Used Fuel is Currently Stored in Canada
- Figure N°3 : Typical CANDU Fuel Bundle

### Packaging and Transportation casks :

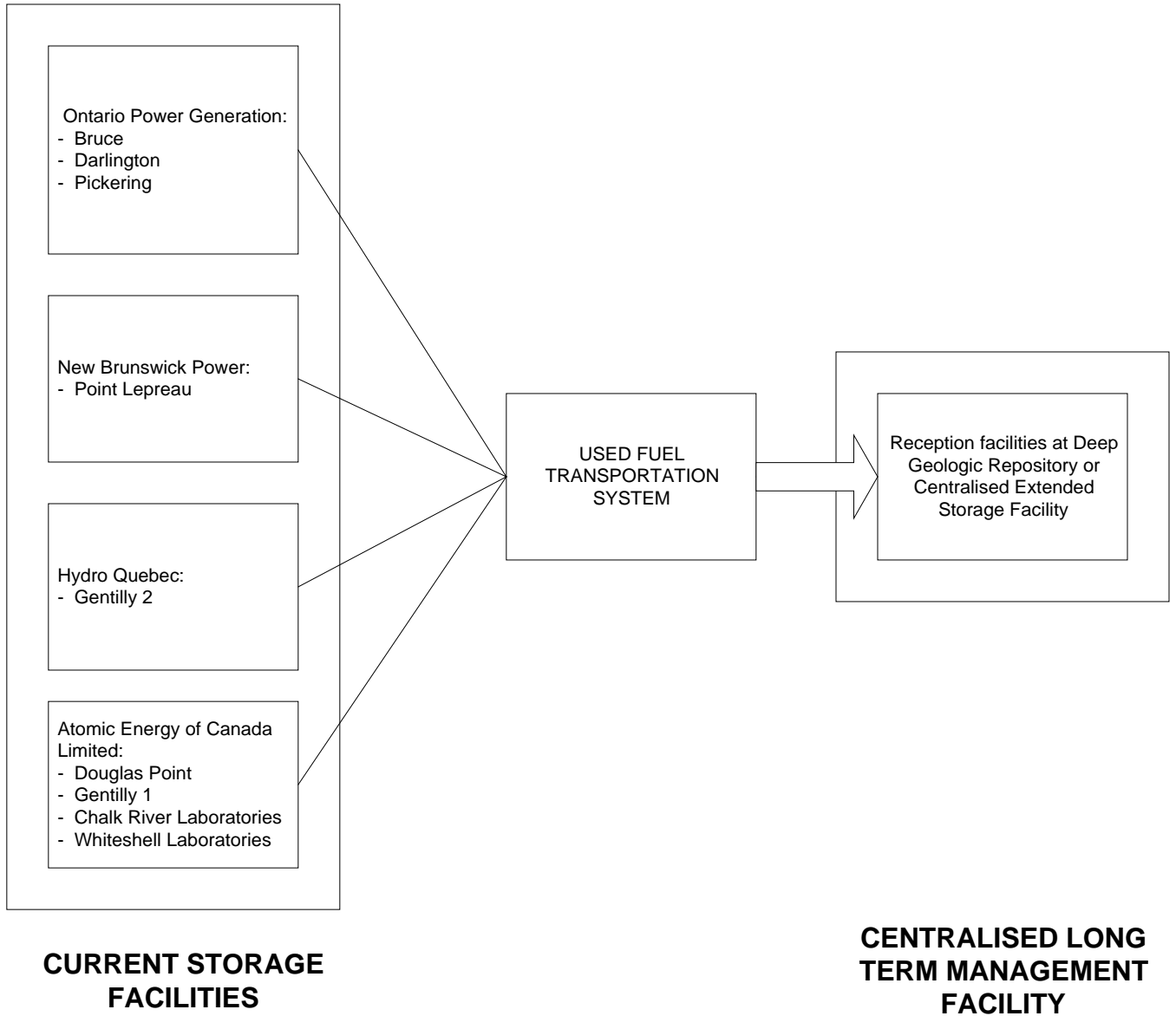
- Figure N°4 : IFTC
- Figure N°5 : IFTC/BM loaded with 2 Modules
- Figure N°6 : IFTC/BM loaded with 3 Baskets
- Figure N°7 : Dry Storage Container
- Figure N°8 : Dry Storage Container Transportation Package

### Equipment / Facilities :

- Figure N°9 : Fuel basket transfer flask on a IFTC/BM ( similar to fuel basket transfer on a canister)
- Figure N°10 : Transfer flask for baskets in Gentilly
- Figure N°11 : Example of Maintenance Facilities for casks at La Hague Plant

### Vehicles :

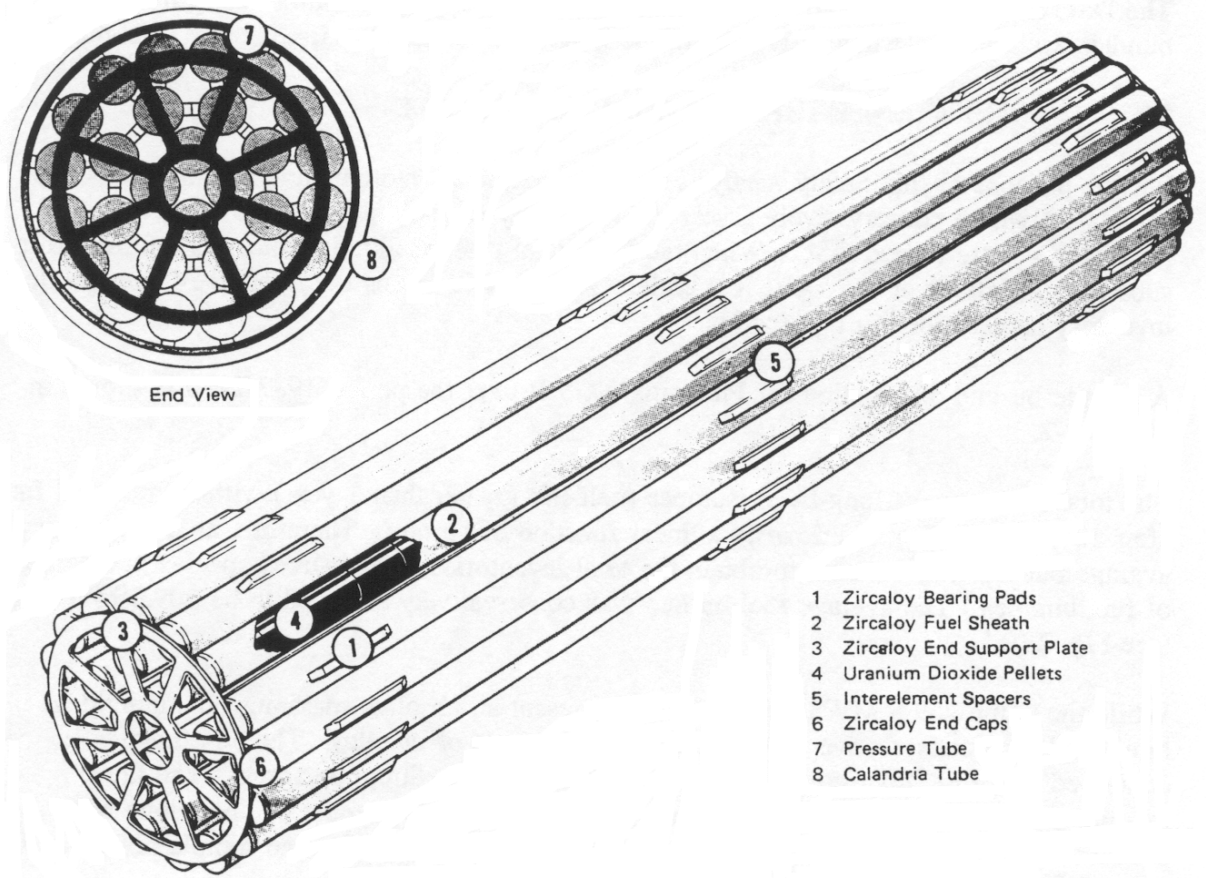
- Figure N°12 : Example of 9 axles Trailer
- Figure N°13 : Example of 4 axles Trailer
- Figure N°14 : Example of a Tractor and 4 axles Trailer
- Figure N°15 : IFTC Tie Down
- Figure N°16 : Example of a depressed centre, flat bed car Rail car
- Figure N°17 : Tie-Down system of DSCTP on depressed centre, flat bed car
- Figure N°18 : Example of a railcar
- Figure N°19: Example of a vessel
- Figure N°20: Example of a water-road transfer
- Figure N°21 : IFTC/BM in vessel
- Figure N°22 : DSCTP in vessel



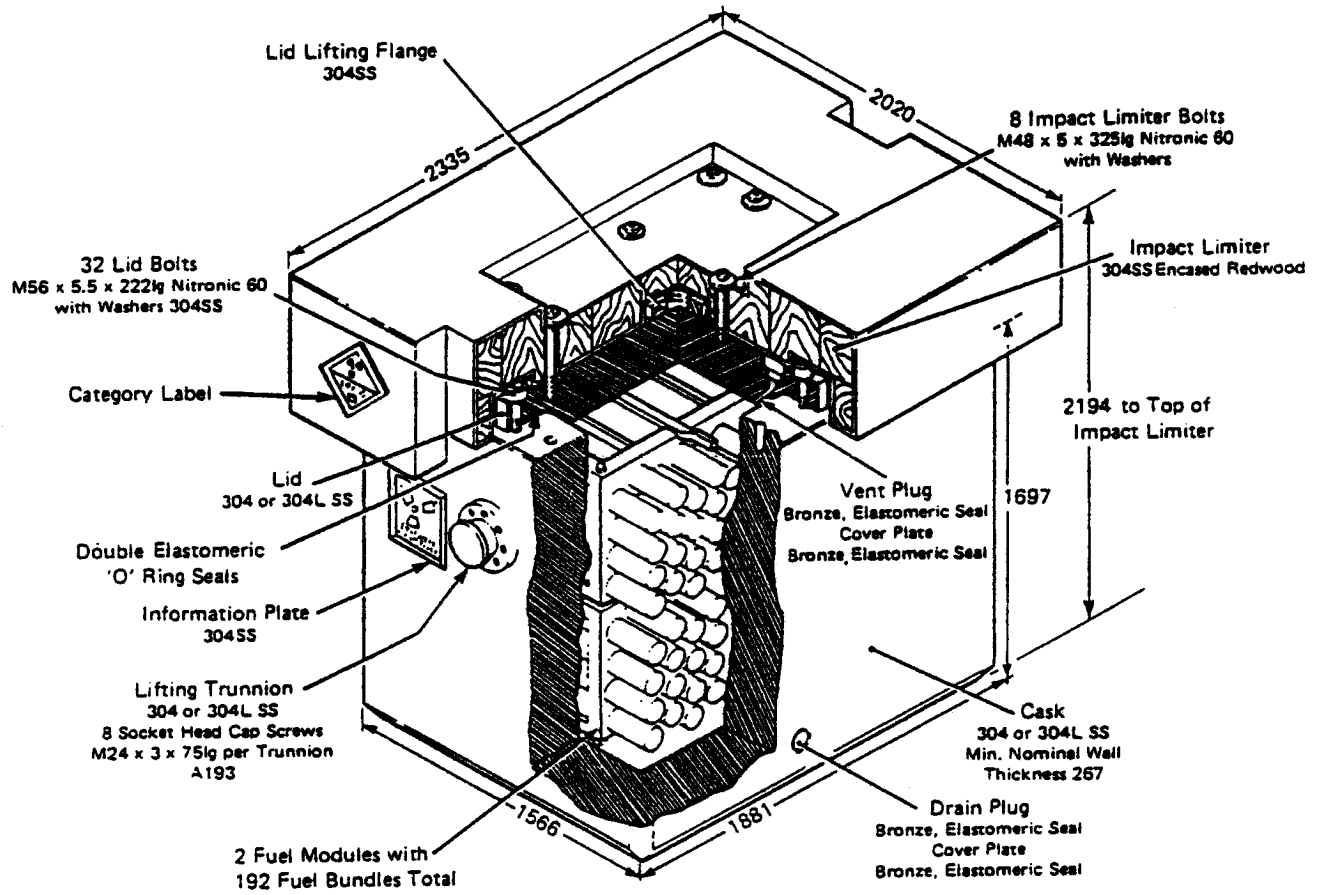
**FIGURE N° 1: PURPOSE OF USED FUEL TRANSPORTATION SYSTEM**



**FIGURE N° 2: REACTOR SITES WHERE USED FUEL IS CURRENTLY STORED IN CANADA**

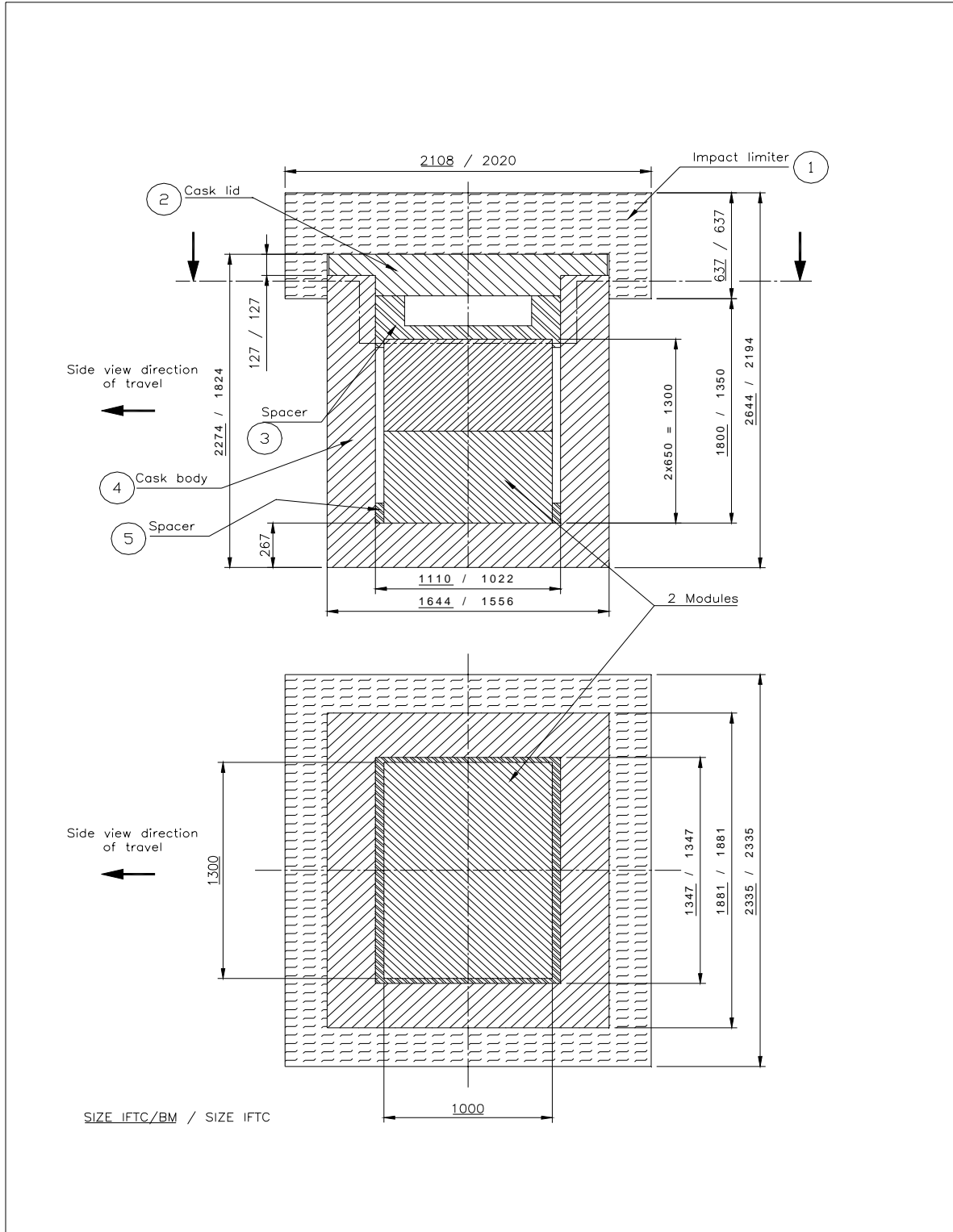


**FIGURE N° 3: TYPICAL CANDU FUEL BUNDLE**

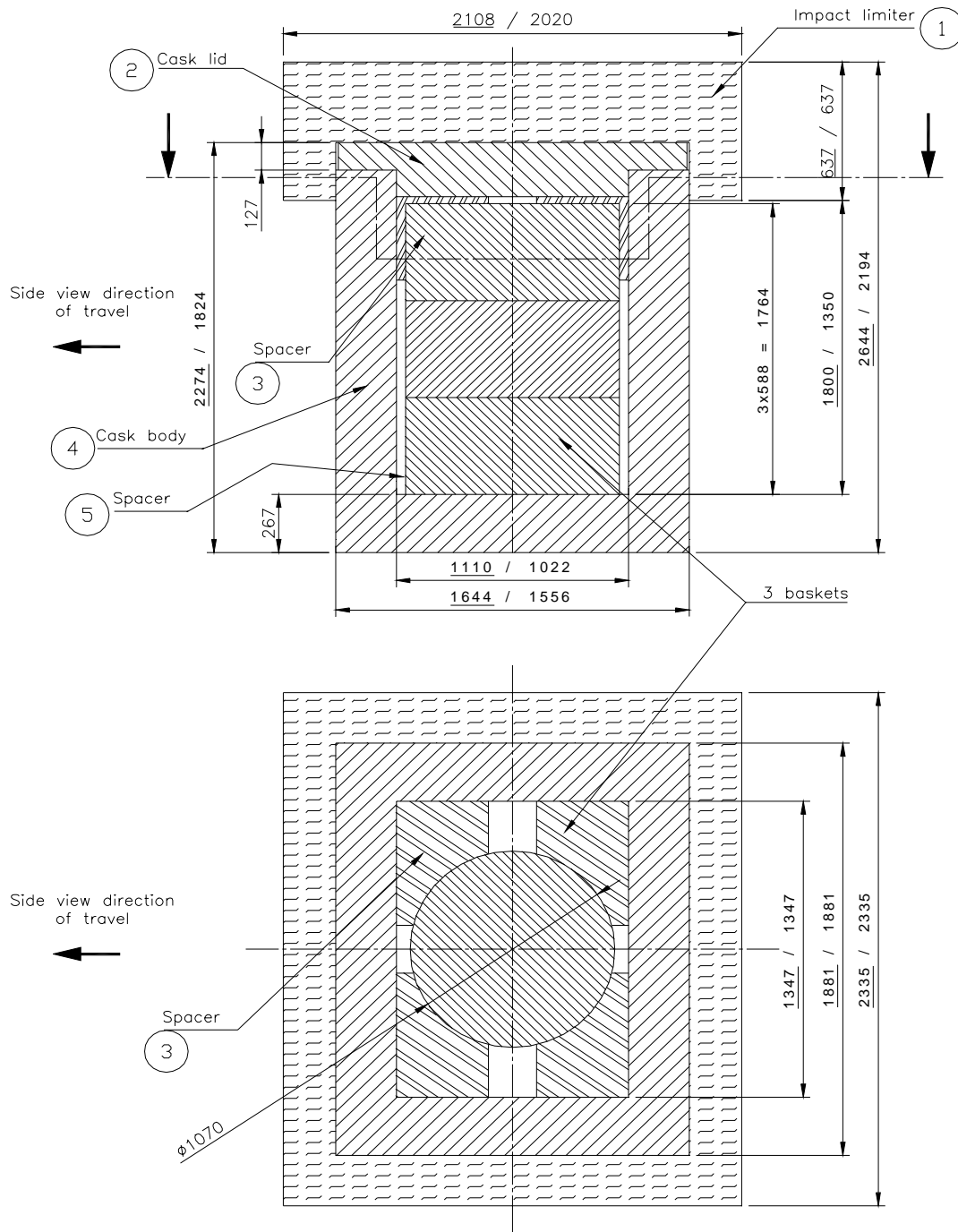


All Dimensions in Millimetres

FIGURE N° 4: IFTC

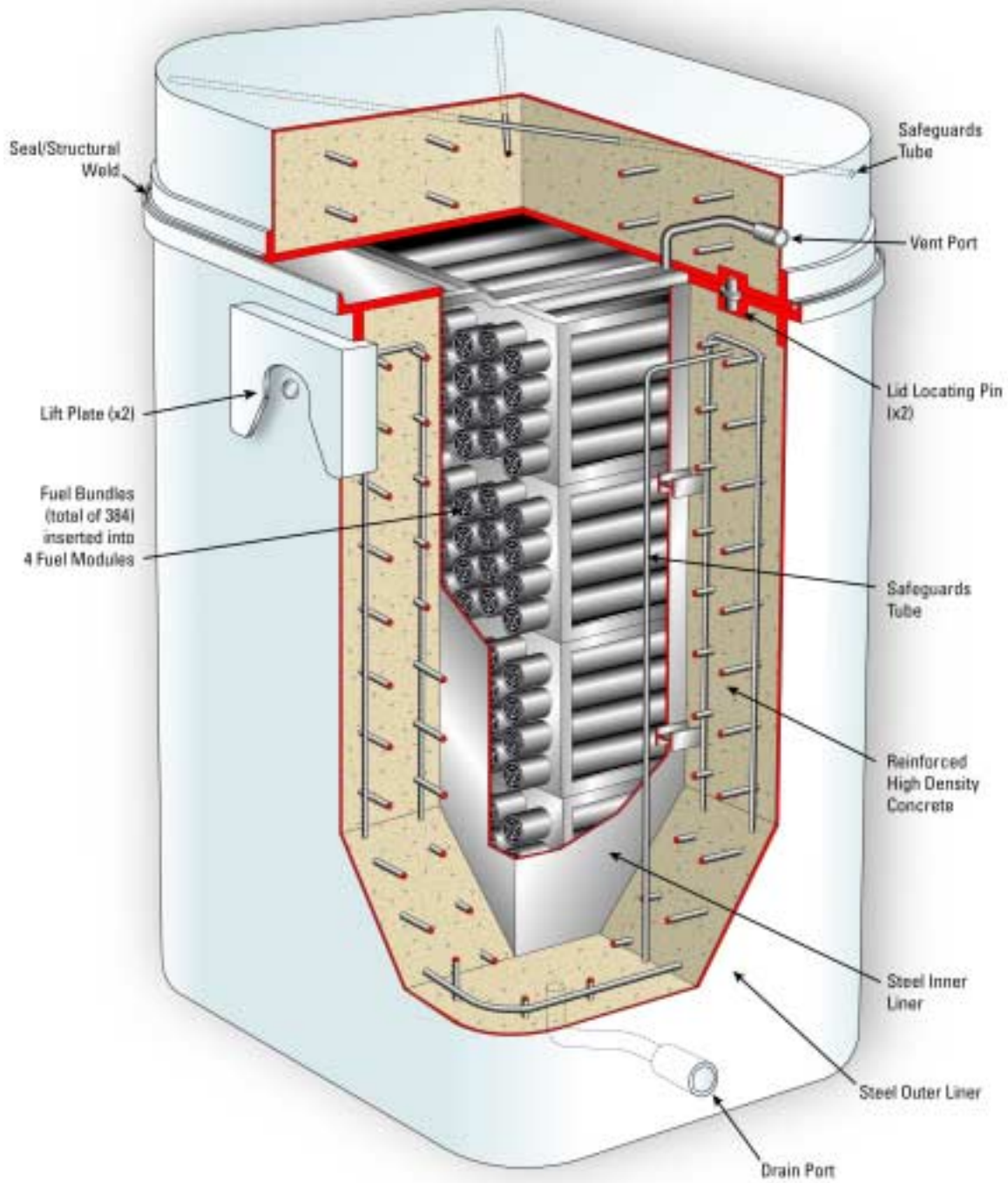


**FIGURE N° 5: IFTC/BM LOADED WITH 2 MODULES**



ZE IFTC/BM / SIZE IFTC

**FIGURE N° 6: IFTC/BM LOADED WITH 3 BASKETS**



**FIGURE N° 7: DRY STORAGE CONTAINER**



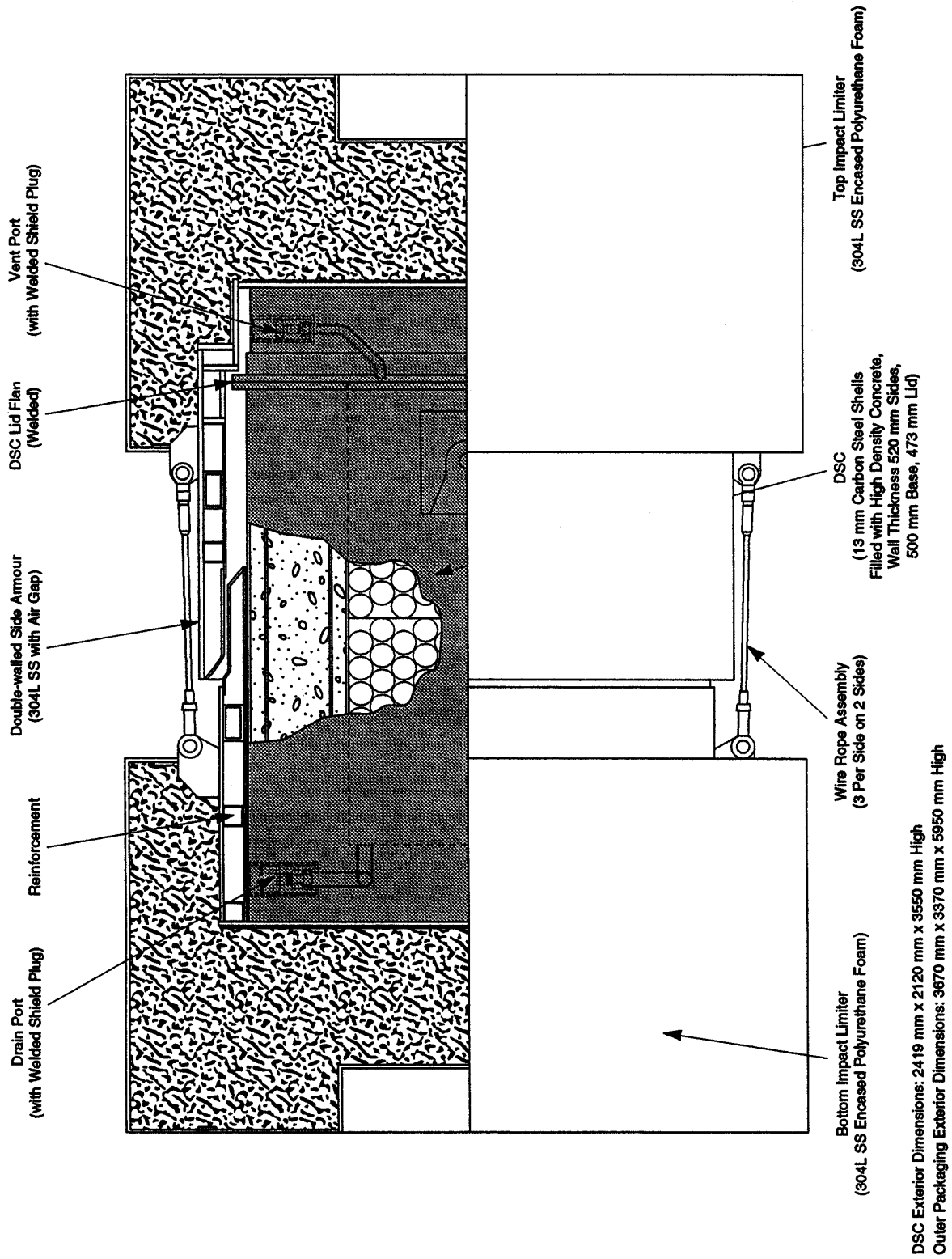
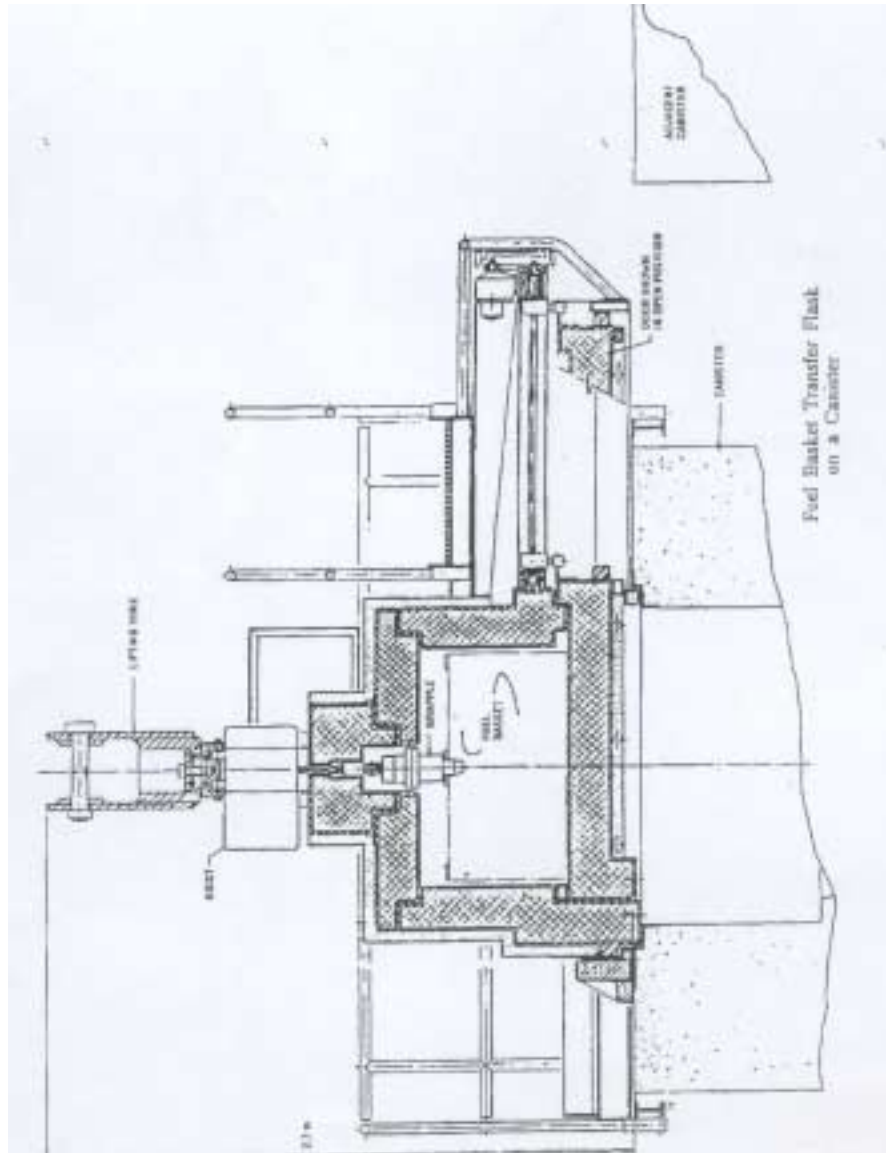


FIGURE N° 8: DRY STORAGE CONTAINER TRANSPORTATION PACKAGE



**FIGURE N° 9: FUEL BASKET TRANSFER FLASK ON A IFTC/BM ( SIMILAR TO FUEL BASKET TRANSFER ON A CANISTER)**

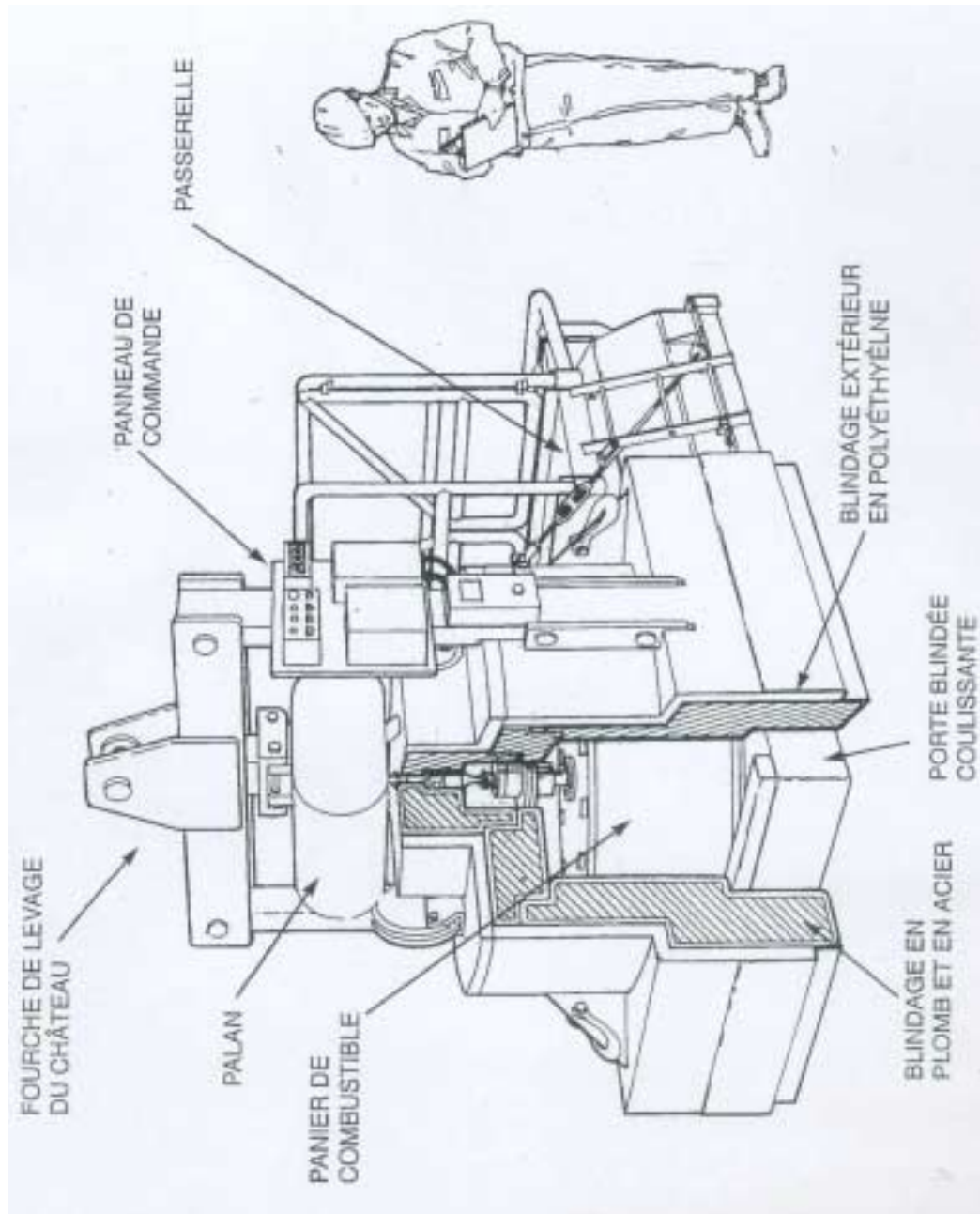


FIGURE N° 10: TRANSFER FLASK FOR BASKETS IN GENTILLY



**FIGURE N° 11: EXAMPLE OF MAINTENANCE FACILITIES FOR CASKS AT LA HAGUE PLANT**



**FIGURE N° 12: EXAMPLE OF 9 AXLES TRAILER**



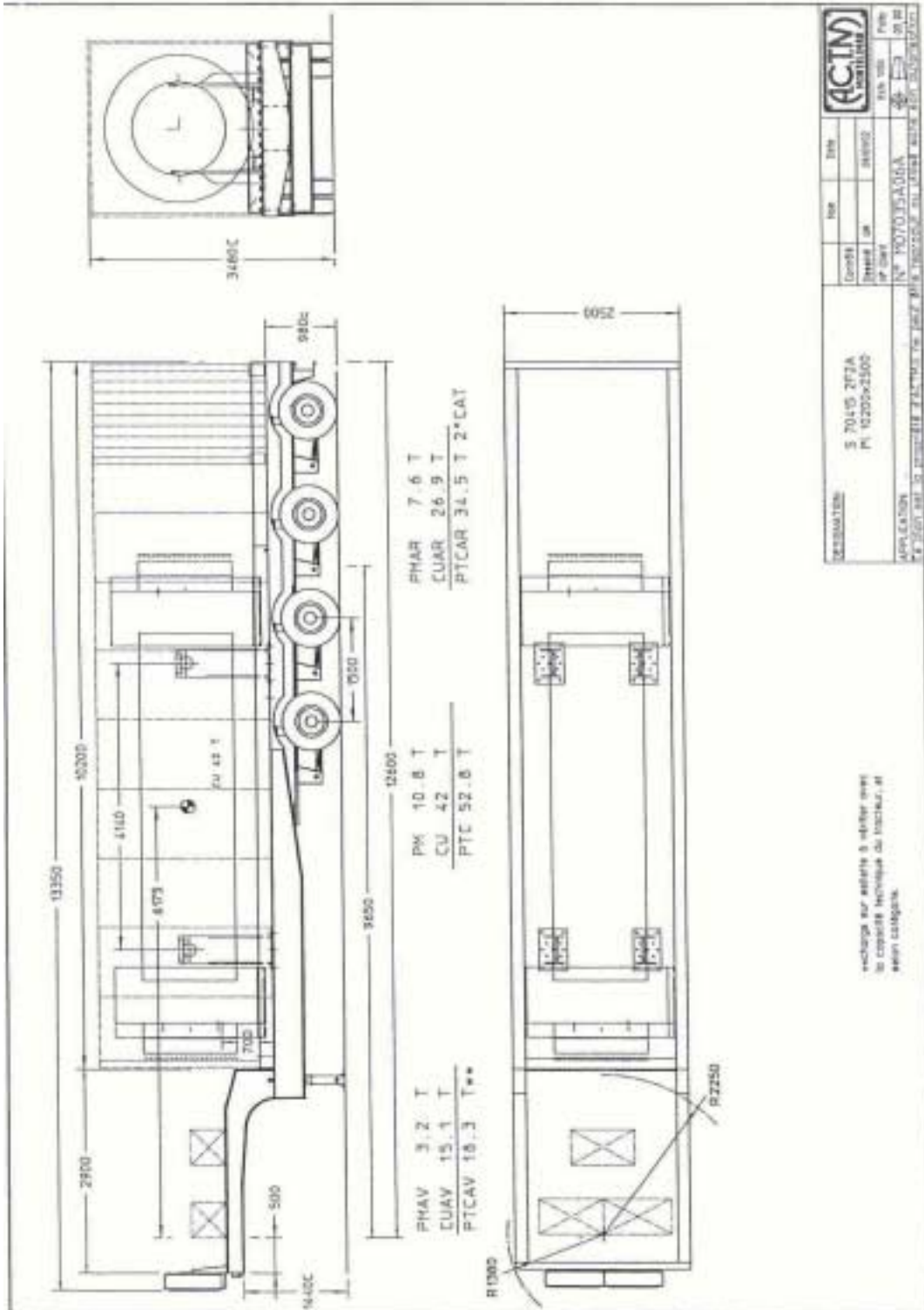
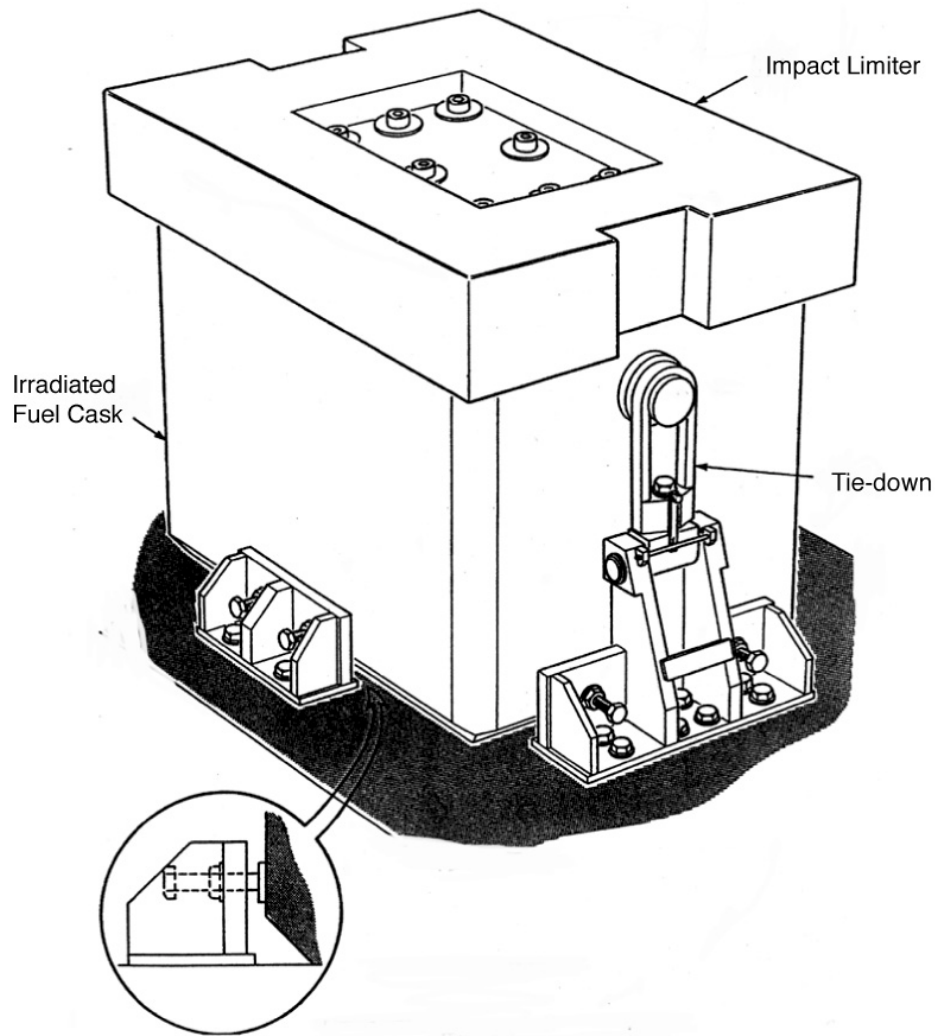


FIGURE N° 13: EXAMPLE OF 4 AXLES TRAILER





**FIGURE N° 15: IFTC TIE DOWN (ROAD)**





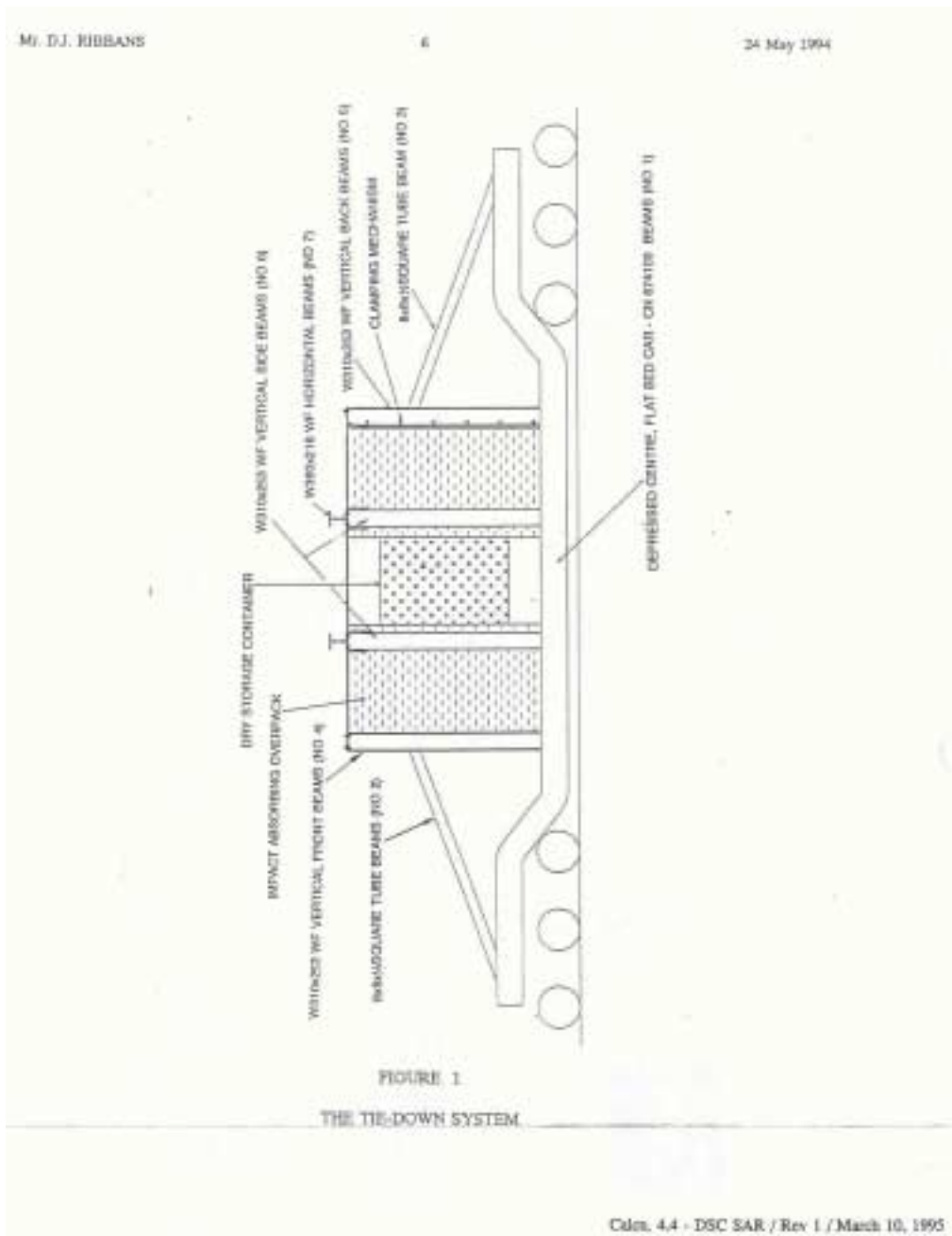


FIGURE N° 17: TIE-DOWN SYSTEM OF DSCTP ON DEPRESSED CENTRE, FLAT BED CAR



**FIGURE N°18 : EXAMPLE OF A RAILCAR**



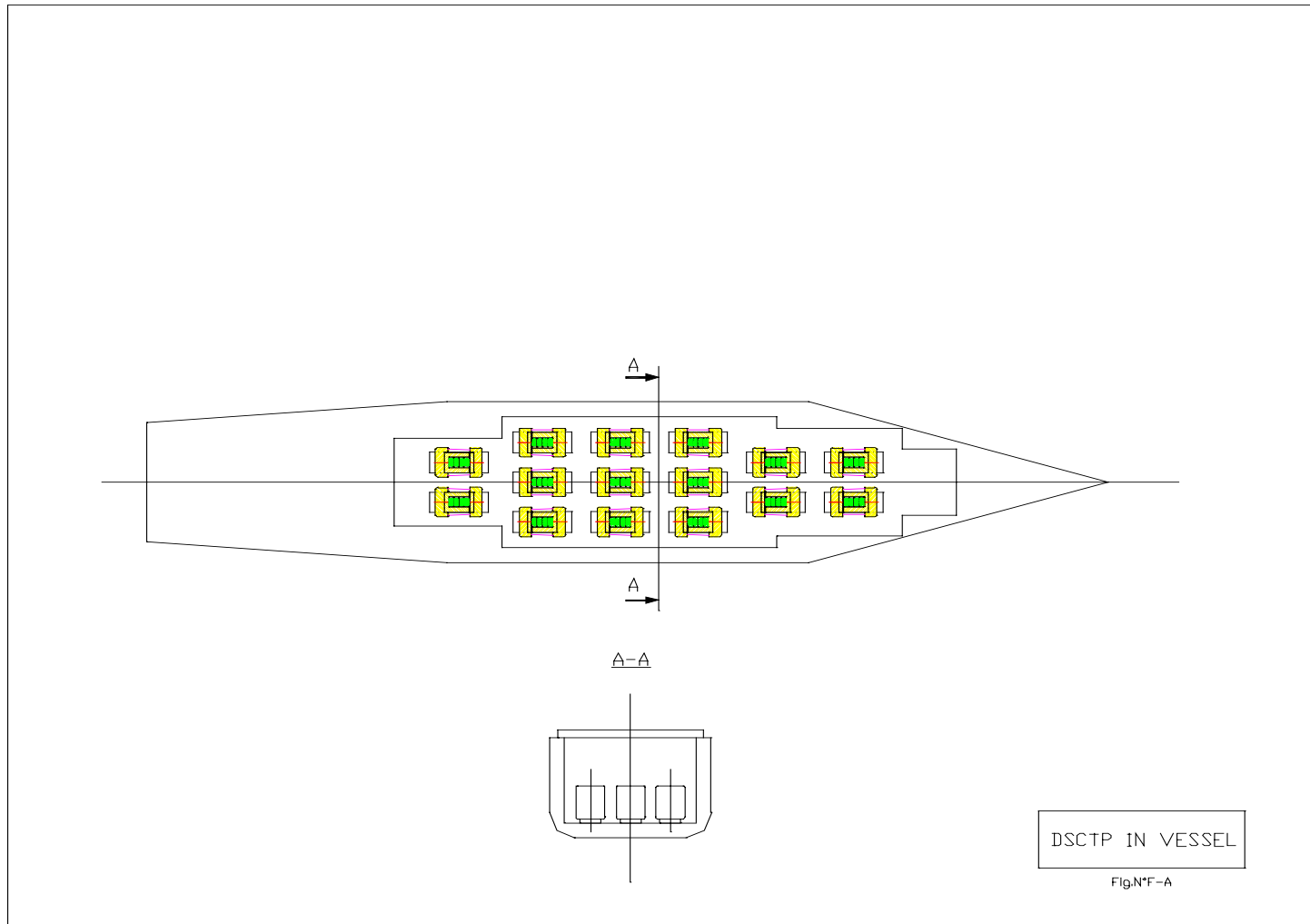
**FIGURE N° 19: EXAMPLE OF A VESSEL**



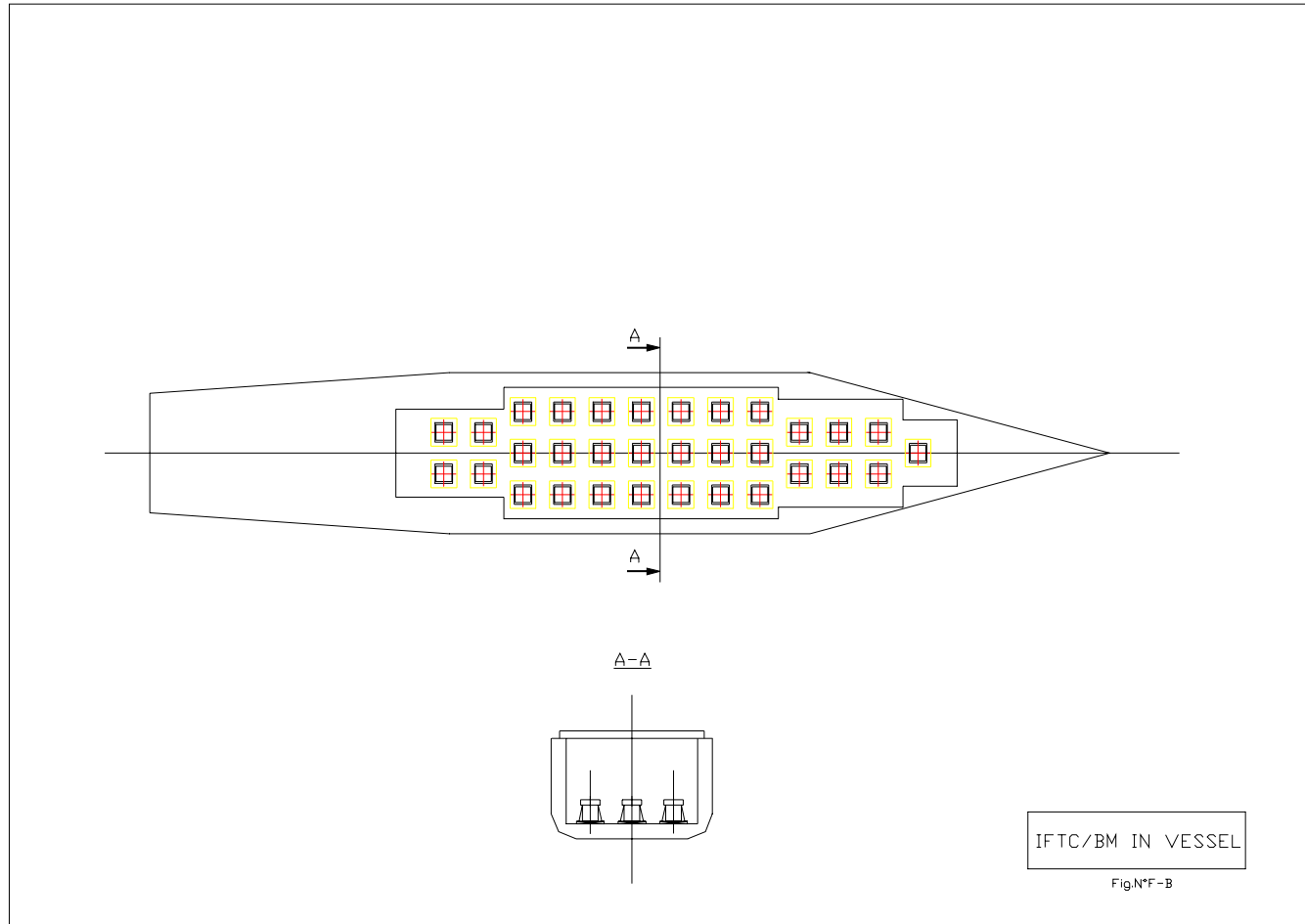


*Photo : COGEMA – Jean-Marie TAILLAT*

**FIGURE N° 20: EXAMPLE OF A WATER-ROAD-TRANSFER**



**FIGURE N° 21: DSCTP IN VESSEL**



**FIGURE N° 22: IFTC/BM IN VESSEL**